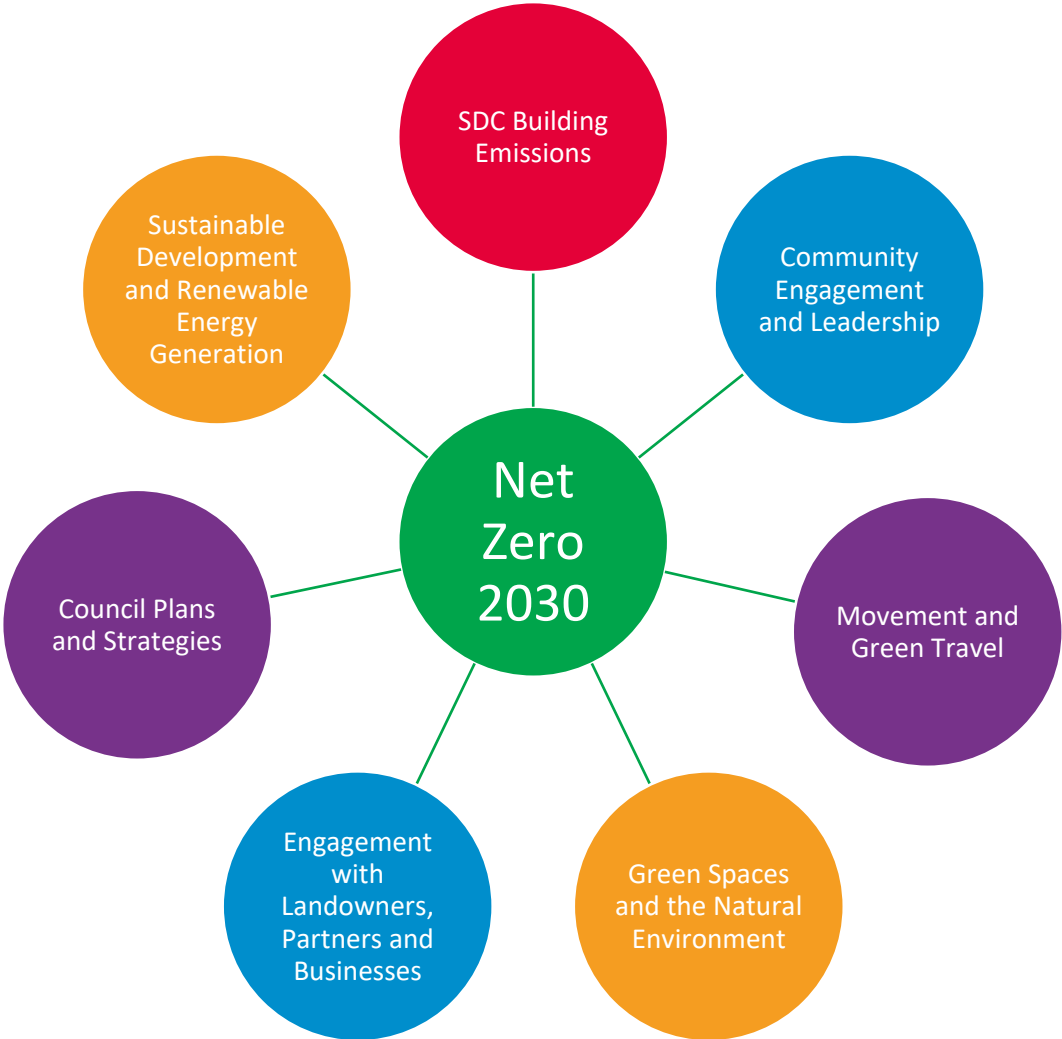


Net Zero 2030 Actions for 2022-23

- 1. In November 2019, the Council agreed a series of actions to begin the process of achieving net zero carbon emissions by 2030. These actions have now been updated and revised to take account of new opportunities and innovations. Additional actions have also been added.
- 2. The actions are grouped into a series of work areas relevant to the Net Zero commitment. Each action is accompanied by delivery milestones for 2022/23 which is the forecasted progress to be made on the action for that year.



SDC Building Emissions

3. We are committed to reduce the carbon emissions from SDC buildings. We have started with buildings that we use and/or deliver services from and will also work with leaseholders and tenants to reduce emissions across our assets. We have already made some changes such as LED lighting and water savings and we will continue to make improvements.
4. SDC has a wide property portfolio with some buildings used directly for Council services such as the Council Offices and Dunbrik, others operated on our behalf such as the leisure centres and others which are leased to other organisations. The Carbon Reduction Plan will look at the contribution our buildings make to the Council's carbon emissions and suggest how the leaseholders of our investment assets, many of whom already have their own climate change strategies, should be engaged on this important agenda.

Action	Timescale	Delivery Projects	Outcomes for 2022-23	Resource	Partners
SDC1 - Reduce carbon emissions in Council buildings resulting from energy use	Ongoing	<ul style="list-style-type: none"> • Carbon Reduction Plan • Implement initiatives to reduce energy use in Council buildings at source • Using digital solutions to reduce carbon emissions • Positive Behaviour Change 	<ul style="list-style-type: none"> • Commission the Carbon Reduction Plan and share the findings with Members and staff and other stakeholders. • Research green energy suppliers and SDC to move to a renewable electricity supplier when the current contract expires this year. • Begin to implement the positive behaviour change SMART agenda. 	<p>Carbon Reduction Plan to be funded from existing Net Zero Budget.</p> <p>Smaller scale projects to be delivered through existing budgets and staff resources.</p> <p>Larger scale projects to be costed via the Carbon Reduction Plan. Additional funding likely to be needed.</p>	<p>SDC - Staff and Members</p> <p>Tenants/ Leaseholders</p>

Action	Timescale	Delivery Projects	Outcomes for 2022-23	Resource	Partners
SDC2 - Work with partners and leaseholders to reduce emissions from Council (built) assets.	Ongoing	<ul style="list-style-type: none"> • Develop a strategy based on the Carbon Reduction Plan to reduce emissions from Council (built) assets. • Ensure new tenants and leaseholders have Net Zero requirements in their leasehold agreements including annual reporting on energy consumption and carbon emissions. • Develop “green leases” for all new leases which take account of the Net Zero 2030 commitment. 	<ul style="list-style-type: none"> • Review the findings and recommendations of the Carbon Reduction Plan and agree which assets are in the scope. • Share the findings of the Carbon Reduction Plan with leaseholders and tenants of assets within the scope and communicate the Council’s Net Zero 2030 commitment. • Develop standard green clauses for leases to be included when leases come up for renewal and new ones established. 	<p>Smaller scale projects to be delivered through existing budgets and staff resources.</p> <p>Larger scale projects to be costed via the Carbon Reduction Plan. Additional funding likely to be needed.</p>	<p>SDC - Staff and Members</p> <p>Tenants/ Leaseholders</p>

Action	Timescale	Delivery Projects	Outcomes for 2022-23	Resource	Partners
SDC3 - Water efficiency measures in Council buildings.	Ongoing	<ul style="list-style-type: none"> Implement initiatives to reduce water usage in Council buildings at source. 	<ul style="list-style-type: none"> Begin to implement the positive behaviour change SMART agenda. 	<p>Smaller scale projects to be delivered through existing budgets and staff resources.</p> <p>Larger scale projects to be costed via the Carbon Reduction Plan. Additional funding likely to be needed.</p>	<p>SDC - Staff and Members</p> <p>Tenants/ Leaseholders</p>

Community Engagement and Leadership

5. We will support businesses, residents and visitors to reduce carbon emissions within the District. We will proactively and positively engage with our communities providing advice, sharing best practice, through education and training, and by encouraging communities to take individual responsibility for their own carbon emissions.
6. We will reach out to hard to reach groups where possible through a range of communication methods and engagement opportunities.
7. We will positively engage with schools and community groups to encourage a reduction in emissions and find ways to work together to achieve our joint aims.

Action	Timescale	Delivery Projects	Outcomes for 2022-23	Resource	Partners
COM1 - Maintain a dedicated “Net Zero” and “Climate Change” webpage.	Ongoing	<ul style="list-style-type: none"> • Keep the Net Zero webpages updated and refreshed to ensure information is kept up to date and to help communities, businesses and visitors to access resources to reduce their own emissions. 	<ul style="list-style-type: none"> • Refresh the Net Zero homepage and associated pages and ensure it is prominently placed in the SDC website. 	Existing resources.	SDC

Action	Timescale	Delivery Projects	Outcomes for 2022-23	Resource	Partners
COM2 - Promote events to support wildlife awareness and opportunities to improve biodiversity.	Ongoing	<ul style="list-style-type: none"> • Promoting and devising District specific events that educate, engage and encourage communities to reduce emissions and support the natural environment in accordance with the communications plan. • Working with partners to devise, promote and support opportunities for communities to improve biodiversity. • Actively promote partnership projects including those of the North West Kent Countryside Partnership. 	<ul style="list-style-type: none"> • Deliver another Sevenoaks Wildlife Event. • Promote partnership projects including NWKCP Hedgehog Highways, Kent Plan Bee and the Darent Valley Landscape Partnership Scheme. • Promote National Wildlife Week, Earth Day 2022, World Bee Day and other such initiatives. 	<p>Utilising existing resources where possible such as core funding.</p> <p>Apply for additional funding to support projects.</p>	<p>SDC</p> <p>North West Kent Countryside Partnership</p> <p>Kent Downs AONB Unit</p> <p>High Weald AONB Unit</p> <p>Kent Wildlife Trust</p> <p>Kent County Council</p>

Action	Timescale	Delivery Projects	Outcomes for 2022-23	Resource	Partners
COM3 - Promote events to support “green” and low carbon initiatives such as energy & water saving, reducing waste, green travel and energy efficiency.	Ongoing	<ul style="list-style-type: none"> • Promoting and devising District specific events that educate, engage and encourage communities to reduce emissions and support the natural environment in accordance with the communications plan. • Working with partners to devise, promote and support opportunities for communities to reduce carbon emissions and reduce waste. • Actively promote partnership projects including those of Kent County Council. 	<ul style="list-style-type: none"> • Promote Zero Waste Week, Global recycling day and other such initiatives including promoting the garden waste and composting scheme. • Promote low carbon travel events such as walk to school/work week, World Car Free Day and Bike Week. 	<p>Utilising existing resources where possible.</p> <p>Working in partnership.</p> <p>Apply for additional funding to support projects.</p>	<p>SDC</p> <p>Kent County Council</p> <p>Green partners e.g. Sustrans, Energy Saving Trust</p>

Action	Timescale	Delivery Projects	Outcomes for 2022-23	Resource	Partners
COM4 - Encourage communities to develop and implement their own carbon emission reduction plans and initiatives.	Ongoing	<ul style="list-style-type: none"> • Consider facilitating a climate change network for Town and Parish Councils to share information, case studies and best practice as well as opportunities for joint working and resources. • When resources allow, work with and support communities to develop and deliver projects to reduce emissions and provide climate change resilience. 	<ul style="list-style-type: none"> • Engage with and support local carbon reduction initiatives and plans. • Encourage Neighbourhood Plans to include climate change considerations and policies. • Promote the Community Carbon Calculator. 	Existing resources. Working in partnership.	SDC Town and Parish Councils Community Groups

Action	Timescale	Delivery Projects	Outcomes for 2022-23	Resource	Partners
COM5 - Help householders and businesses improve energy efficiency by providing free advice and support for energy improvements and energy saving.	Ongoing	<ul style="list-style-type: none"> • Keep the Net Zero webpages updated and refreshed to ensure information is kept up to date and to help communities, businesses and visitors to access resources to reduce their own emissions. • Promote opportunities for residents, businesses and communities to reduce carbon emissions for themselves. • Provide access to climate literacy training and other opportunities to help educate about reducing carbon emissions. 	<ul style="list-style-type: none"> • Refresh the Net Zero homepage and associated pages. • Promote the individual carbon footprint tool calculator. • Participate in and promote the Solar Together project. 	<p>Utilising existing resources where possible.</p> <p>Working in partnership.</p> <p>Apply for additional funding to support projects.</p>	<p>SDC</p> <p>Kent County Council</p> <p>Green partners e.g. Sustrans, Energy Saving Trust</p>

Movement and Green Travel

8. Transport is one of the greatest sources of carbon emissions for both the District and the Council. Although we are not the highways authority for the District we will work with Kent County Council and communities to develop and encourage sustainable travel. We also commit to reducing the carbon emissions from our own fleet by efficiency measures and embracing new low emission technologies.
9. The Movement Strategy has been developed to set out the Council's priorities for sustainable movement in Sevenoaks District. It includes a number of aims to support the priorities including improving the cycling infrastructure, strengthening connections, embracing new technologies and promoting active travel.

Action	Timescale	Delivery Projects	Outcomes for 2022-23	Resource	Partners
TRA1- Promote low carbon travel and sustainable movement.	Ongoing	<ul style="list-style-type: none"> Deliver the Movement Strategy. Develop and implement the SDC Travel Plan. Local Cycling and Walking Infrastructure Plans. Ensure new development incorporate active travel. 	<ul style="list-style-type: none"> Complete the first Local Cycling and Walking Infrastructure Plan. Promote the annual Car Free Day and similar initiatives. Incorporate low carbon travel, active travel and sustainable movement into the emerging Local Plan. SDC Travel Plan. 	<p>Utilising existing resources where possible.</p> <p>Working in partnership.</p> <p>Apply for additional funding to support projects.</p>	<p>SDC</p> <p>Kent County Council</p> <p>Infrastructure Providers</p>

Action	Timescale	Delivery Projects	Outcomes for 2022-23	Resource	Partners
TRA2- Improve the electric vehicle charging network across the District.	Ongoing	<ul style="list-style-type: none"> Identify suitable locations for new charging points. Increase the number of charging points within the District. 	<ul style="list-style-type: none"> Incorporate electric vehicle charging into the emerging Local Plan. Undertake an Electric Vehicle Charging Infrastructure Technical Study. 	<p>Utilising existing resources where possible.</p> <p>Working in partnership.</p> <p>Apply for additional funding to support projects.</p>	<p>SDC</p> <p>Kent County Council</p> <p>Infrastructure Providers</p>
TRA3 - Work with schools, local communities and groups to encourage low carbon travel such as car clubs, travel plans, cycling and walking routes.	Ongoing	<ul style="list-style-type: none"> Deliver the Movement Strategy. Engage with schools to promote low carbon travel. Partnership working with KCC and transport providers. Support the Community Rail Partnerships to deliver improvements to the rail networks. 	<ul style="list-style-type: none"> Identify ways to work with schools and community groups. Complete the first Local Cycling and Walking Infrastructure Plan. 	<p>Utilising existing resources where possible.</p> <p>Working in partnership.</p> <p>Apply for additional funding to support projects.</p>	<p>SDC</p> <p>Kent County Council</p> <p>Infrastructure Providers</p>

Action	Timescale	Delivery Projects	Outcomes for 2022-23	Resource	Partners
		<ul style="list-style-type: none"> Investigate the potential for low carbon car clubs. 			
TRA4 - Continue our transition to a zero-carbon emissions vehicle fleet wherever practicable.	Ongoing	<ul style="list-style-type: none"> Fleet replacement plan to set out how the fleet can be replaced by low carbon alternatives. Investigate the potential for bio-diesel fuel for fleet vehicles. Undertake a waste service review to identify the options for significantly reducing carbon emissions from the fleet and operations. Identify potential work mileage savings and implement across all Council services. 	<ul style="list-style-type: none"> Fleet Replacement Plan. SDC Travel Plan. Clear picture of feasibility of bio-diesel fuel and cost implications. 	<p>Utilising existing resources where possible.</p> <p>Apply for additional funding to support projects.</p>	SDC

Action	Timescale	Delivery Projects	Outcomes for 2022-23	Resource	Partners
		<ul style="list-style-type: none"> Develop and implement the SDC Travel Plan. 			

Green Spaces and the Natural Environment

10. We commit to improving our natural environment for now and future generations, taking account of a changing climate. We will also support multi-benefit projects which conserve and enhance the natural environment whilst also increasing levels of carbon sequestration.

Action	Timescale	Delivery Projects	Outcomes for 2022-23	Resource	Partners
NAT1 - Carbon emission offsetting through new planting including planting new trees.	Ongoing	<ul style="list-style-type: none"> Work with KCC to deliver the Kent Tree Strategy. Investigate, develop and support projects for carbon sequestration. 	<ul style="list-style-type: none"> Participate in the Queen's Green Canopy Scheme. 	<p>Utilising existing resources where possible.</p> <p>Working in partnership.</p> <p>Apply for additional funding to support projects.</p>	<p>SDC</p> <p>Kent County Council</p> <p>Green partners e.g. North West Kent Countryside Partnership, Kent Wildlife Trust</p>
NAT2 - Improve areas for biodiversity and create new habitats	Ongoing	<ul style="list-style-type: none"> Work with partners and communities to identify opportunities to plant trees, hedges, wildflowers and other habitats. Support and promote scheme to conserve and enhance biodiversity and 	<ul style="list-style-type: none"> Incorporate biodiversity net gain into the emerging Local Plan. 	<p>Utilising existing resources where possible.</p> <p>Working in partnership.</p> <p>Apply for additional funding to support projects.</p>	<p>SDC</p> <p>Kent County Council</p> <p>Green partners e.g. North West Kent Countryside Partnership, Kent Wildlife Trust</p>

Action	Timescale	Delivery Projects	Outcomes for 2022-23	Resource	Partners
		<p>wildlife at a local and landscape scale.</p> <ul style="list-style-type: none"> • Biodiversity Net Gain and Environment Act delivery. 			
NAT3 - Natural flood management	Ongoing	<ul style="list-style-type: none"> • Support natural flood management projects. 	<ul style="list-style-type: none"> • Incorporate natural flood management into the emerging Local Plan. 	<p>Utilising existing resources where possible.</p> <p>Working in partnership.</p> <p>Apply for additional funding to support projects.</p>	<p>SDC</p> <p>Kent County Council</p> <p>Green partners e.g. North West Kent Countryside Partnership, Kent Wildlife Trust</p>

Engagement with Landowners, Partners and Businesses

11. Partnership working is key to the delivery of the Council's Net Zero 2030 commitment. We can work with others to achieve joint goals, making the most of resources and learning from best practice.
12. We will encourage landowners and businesses to reduce their own emissions and to incorporate climate change adaptation measures.

Action	Timescale	Delivery Projects	Outcomes for 2022-23	Resource	Partners
PAR1 - Ensure the Net Zero 2030 commitment is incorporated into the Council's procurement process	Ongoing	<ul style="list-style-type: none"> • Net Zero 2030 to be incorporated into the procurement process. To include the Procurement Initiation Form, Request for Quote and tender templates. 	<ul style="list-style-type: none"> • Update the procurement templates to include relevant requirements from bidders and agree these with the Procurement Assurance Group. 	Existing Resources.	SDC
PAR2 - Report and promote our actions towards Net Zero, and support our partners including landowners,	Ongoing	<ul style="list-style-type: none"> • Produce a yearly Action Plan and Report • Regularly report to the Cleaner and Greener Advisory Committee 	<ul style="list-style-type: none"> • Review the reporting system for Net Zero progress as part of the webpage refresh 	Existing Resources. Working in partnership.	SDC Business Partners

Action	Timescale	Delivery Projects	Outcomes for 2022-23	Resource	Partners
residents, businesses and visitors to our District to play their part		<ul style="list-style-type: none"> • Regularly feature Net Zero 2030 on the Council’s social media accounts and other communications media • Engage with the community through existing forums and groups such as the Town and Parish forum, Chambers of Commerce and Rural Landowners Forum 		Apply for additional funding to support projects.	
PAR3 - Encourage, and work with, businesses in our District to reduce carbon emissions	Ongoing	<ul style="list-style-type: none"> • Economic Development Strategy • Engage with the business community to discuss how SDC can support low carbon initiatives and advise on how they can reduce emissions • Promote carbon literacy and other similar 	<ul style="list-style-type: none"> • Incorporate reduction in carbon emissions into the Economic Development Strategy • Proactively engage with local businesses and SDC tenants 	<p>Utilising existing resources where possible.</p> <p>Working in partnership.</p> <p>Apply for additional funding to support projects.</p>	<p>SDC</p> <p>Business Partners</p>

Action	Timescale	Delivery Projects	Outcomes for 2022-23	Resource	Partners
		training opportunities for businesses			
PAR4 - Work with the local government family within Kent to deliver Net Zero across all our communities	Ongoing	<ul style="list-style-type: none"> Support the delivery of Kent and Medway's Energy and Low Emissions Strategy and it's priority actions. Promote and support suitable partnership projects including the Solar Together Scheme, Kent Tree Strategy and Kent Rural EV charging scheme. Engage with KCC to promote the net zero work and identify partnership opportunities. 	<ul style="list-style-type: none"> Liaise with the Kent Climate Change Network. Work in partnership with KCC officers to deliver joint projects. 	<p>Utilising existing resources where possible.</p> <p>Working in partnership.</p>	<p>SDC</p> <p>Kent County Council</p> <p>Town and Parish Councils</p> <p>Other Local Authorities</p>

Council Plans and Strategies

13. We will integrate our Net Zero 2030 commitment to all aspects of the Council’s plans, strategies and services to ensure all potential opportunities are utilised. As new strategies are developed or reviewed they will incorporate elements that help to deliver the Net Zero 2030 commitment.
14. The Local Plan is a key delivery mechanism for the Net Zero 2030 commitment. The Local Plan will support the commitment and include policies to promote sustainable development in the District. The Air Quality Action Plan, Economic Development Strategy and the Community Plan are also key documents for delivery of the commitment.
15. It is important to understand the baseline carbon emissions for the Council. This will be incorporated into the Carbon Reduction Plan and is currently calculated following the Department of Business, Energy and Industrial Strategy guidance and the Local Government Association Greenhouse Gas Reporting Tool.

Action	Timescale	Delivery Projects	Outcomes for 2022-23	Resource	Partners
STR1 - Embed the findings and recommendations of the Carbon Reduction Plan into Council Plan and a Strategies	Short Term	<ul style="list-style-type: none"> • Carbon Reduction Plan • Identify the plans and strategies central to delivering the Carbon Reduction Plan recommendations particularly those related to the use of Council buildings and fleet 	<ul style="list-style-type: none"> • Commission consultants to undertake a Carbon Reduction Plan 	Utilising existing resources where possible	SDC

Action	Timescale	Delivery Projects	Outcomes for 2022-23	Resource	Partners
STR2 - Ensure all Council plans, strategies and decisions support the Net Zero 2030 commitment where possible	Short Term	<ul style="list-style-type: none"> Identify and implement process that ensure the impact on the Net Zero agenda is considered in decision making Incorporate the Net Zero 2030 commitment and carbon reduction measures into all new plans and strategies 	<ul style="list-style-type: none"> Review the “Net Zero 2030 Impact Assessment” for committee reports Incorporate Net Zero 2030 in the Community Plan, Air Quality Action Plan, Economic Development Strategy and the Local Plan 	Existing Resources	SDC
STR3 - Embed positive behaviour change to reduce carbon emissions in all Council service areas	Short Term	<ul style="list-style-type: none"> Deliver the positive behaviour change SMART agenda Identify ways in which Council services and processes can be more carbon efficient e.g. reducing waste, paperless working and reducing work mileage. Officer and Member training on reducing carbon emissions 	<ul style="list-style-type: none"> Start implementing the SMART agenda SDC Travel Plan Investigate suitable training options for staff and members 	<p>Utilising existing resources where possible.</p> <p>Working in partnership</p> <p>Apply for additional funding to support projects</p>	SDC

Action	Timescale	Delivery Projects	Outcomes for 2022-23	Resource	Partners
		<ul style="list-style-type: none"> Carbon Literacy Training as part of new learning and development offer 			
STR4 - Where everything possible has been done to achieve zero carbon but there is still a shortfall, take action through offsetting carbon dioxide emissions where necessary	Long Term	<ul style="list-style-type: none"> Manage carbon budgets for each year in order to minimise need to offset Develop carbon offsetting plan once Carbon Reduction Plan has been completed and viability of offsetting has been explored 	<ul style="list-style-type: none"> Use evidence from the Carbon Reduction Plan modelling to determine the extent of offsetting that might be required Begin to explore potential ways to offset the Council's carbon emissions 	<p>Utilising existing resources where possible.</p> <p>Working in partnership</p> <p>Apply for additional funding to support projects</p>	<p>SDC</p> <p>Carbon Offsetting Partners</p>

Action	Timescale	Delivery Projects	Outcomes for 2022-23	Resource	Partners
STRA5 - Audit our current and levels of energy use and greenhouse gas emissions	Ongoing	<ul style="list-style-type: none"> Produce and publish an annual Greenhouse Gas Emissions Report 	<ul style="list-style-type: none"> Produce and publish an annual Greenhouse Gas Emissions Report 	Utilising existing resources where possible. Working in partnership Apply for additional funding to support projects	SDC

Sustainable Development and Renewable Energy Generation

16. Buildings remain a significant emitter of carbon and therefore we commit to supporting low carbon buildings and development where possible. The Local Plan will help to deliver sustainable development within the District and residents and businesses will be encouraged to take part in retrofitting schemes.
17. We will also explore and support the use of renewable energy technologies and opportunities both large and small scale.

Action	Timescale	Delivery Projects	Outcomes for 2022-23	Resource	Partners
SUS1 - Support and Promote sustainable building practices and sustainable development	Ongoing	<ul style="list-style-type: none"> Promote sustainable building practices across the District Support suitable retrofitting projects to improve the sustainability of buildings 	<ul style="list-style-type: none"> Incorporate the Net Zero 2030 commitment and the need to reduce carbon emissions into the emerging Local Plan Investigate how the Council can incentivise sustainable building practice such as Passivhaus and BREEAM standard housing Participate in Solar Together Kent 	<p>Utilising existing resources where possible.</p> <p>Working in partnership</p> <p>Apply for additional funding to support projects</p>	<p>SDC</p> <p>Kent County Council</p>

Action	Timescale	Delivery Projects	Outcomes for 2022-23	Resource	Partners
SUS2 - Ensure the Net Zero 2030 commitment is reflected in all new SDC and SDC owned company developments	Ongoing	<ul style="list-style-type: none"> All new SDC and SDC owned development to achieve high sustainability standards where possible 	<ul style="list-style-type: none"> New SDC owned developments to exceed existing regulatory requirements 	<p>Utilising existing resources where possible.</p> <p>Working in partnership</p> <p>Apply for additional funding to support projects</p>	<p>SDC and associated companies</p> <p>Development partners</p>
SUS3 - Renewable energy generation	Short/ Medium Term	<ul style="list-style-type: none"> Undertake a renewable energy opportunities audit for Council Assets and within the District Explore and implement suitable renewable energy schemes 	<ul style="list-style-type: none"> Incorporate renewable energy into the Carbon Reduction Plan including as a means of offsetting emissions 	<p>Utilising existing resources where possible.</p> <p>Working in partnership</p> <p>Apply for additional funding to support projects</p>	SDC