



<b><u>Table of contents</u></b>	<b><u>Page no.</u></b>
Introduction	Page 3
Priority issues 2021-22	Page 4
Success measures	Page 6
Serious & Acquisitive Crime incl OCG, Emerging Trends and County Lines	Page 8
Anti-Social Behaviour incl Environmental Crime	Page 9
Domestic Abuse incl Stalking	Page 14
Safeguarding including Young People, Vulnerable Adults, CSE, Modern Slavery, Human Trafficking, Prevent, Care Act and Mental Health	Page 19
Doorstep Crime incl Scams and Cyber Crime	Page 22
Substance Misuse	Page 24
Glossary	Page 26
Members of the Partnership	Page 27
Terms of reference	Page 28
Partnership structure	Page 29
Map of Sevenoaks District	Page 30

This publication is available in large print. For a copy call (01732 227414).

[www.sevenoaks.gov.uk](http://www.sevenoaks.gov.uk)

If you need help communicating with us or understanding this document, we can arrange for an interpreter to help you.

Please contact us on 01732 227000 stating your language and telephone number

## Action Plan 2021-22

### Introduction

The Sevenoaks District Community Safety Partnership brings together all of the agencies in the District who can have an impact on crime, anti-social behaviour and the fear of crime. A list of partners is set out on page 24. The Partnership has 3 key aims. They are to:

- Reduce and detect crime
- Reduce anti-social behaviour and the fear of crime
- Strengthen community involvement

Each year the Partnership, in common with all of the Community Safety Partnerships in Kent, undertakes an assessment of crime and disorder in the District, using data provided by partners and feedback from residents. The assessment identifies the priority issues for the next year using the following rationale for each community safety type:

- Whether there is significant community concern
- Whether there is an increasing trend
- Whether it contributes to a high volume of crime
- The level of harm it causes
- How well it is performing compared with other parts of Kent
- Whether the Partnership can add value to the work

**This Action Plan identifies where we can best work together to achieve results.**

## Priority Issues for 2021-22

The Strategic Assessment was undertaken during the winter of 2020 and identified six priorities for the Partnership to tackle during 2021-22. The data referred to in this Action Plan is based on the Strategic Assessment, and uses data between 1 October 2019 - 30 September 2020, unless otherwise stated. Trends in the identified priorities continue to be monitored on a quarterly basis and the first monitoring will be available in July 2021.

The six priorities, as ranked in the Strategic Assessment, are:

- Serious and Acquisitive Crime including Organised Crime Groups, Emerging Trends and County Lines<sup>1</sup>
- Anti-Social Behaviour incl Environmental Crime
- Domestic Abuse
- Safeguarding (including Prevent, Mental Health, Human Trafficking, Modern Slavery, CSE (Child Sexual Exploitation, Vulnerable Adults and Protecting Children)
- Doorstep Crime including Scams and Cyber Crime
- Substance Misuse

Although the Partnership's main focus will be the six priorities, it will continue to monitor and plan for trends in crime and other community safety issues and address them through the Community Safety Unit's daily briefings and other tasking arrangements in order to reduce recorded crime.

### The Action Plan

The following pages set out the overall targets for the Community Safety Partnership. The Action Plan does not include details of the numerous activities already undertaken by partners, town and parish councils, the voluntary sector and others as part of their day-to-day work, but highlights activities in addition to core work, which partners will undertake throughout the forthcoming year. All priorities include actions around public perception and reducing repeat offenders/victims.

---

<sup>1</sup> County Lines refer to organised ways of dealing drugs

### **Funding and monitoring**

Funding for the actions included within the Action Plan is available from a number of sources, including partners' own budgets, Police & Crime Commissioner's (PCC) funding which is allocated to district Community Safety Partnerships, Choosing Health funding and other small amounts of funding from a variety of sources.

Regular monitoring will take place to ensure that individual projects continue to deliver positive results as well as value for money and that this Action Plan is on target.

### **Equalities**

In preparing the action plan, issues such as equality and diversity were considered to ensure that everybody feels safe in the District.

DRAFT

## SEVENOAKS DISTRICT COMMUNITY SAFETY PARTNERSHIP - ACTION PLAN 2021-2022

### SUCCESS MEASURES

#### **All recorded crime**

All Victim Based Crime - Maintain position in the lowest 3 District/Borough in the County.

#### **Serious & Acquisitive Crime including Organised Crime Groups, Emerging Trends and County Lines**

Improve the position of Vehicle Crime and Burglary within the County

#### **Domestic Abuse**

Reduction in the percentage of repeat victims

#### **Anti-Social Behaviour**

Maintain position in the lowest 3 District/Borough in the County

#### **Safeguarding (including Prevent, Mental Health, Human Trafficking, Modern Slavery, CSE (Child Sexual Exploitation), Vulnerable Adults and Protecting Children)**

All partners taking part in training in each of the safeguarding strands

#### **Doorstep Crime incl Scams and Cyber Crime**

Proactive initiatives on Door Step Crime and Cyber Crime delivered in partnership with County Analyst

#### **Substance Misuse.**

Number of areas visited through CSU taskings

## Serious & Acquisitive Crime incl Organised Crime Groups, Emerging Trends and County Lines

Criminals behind serious and tactical crime often intimidate and create fear, which is intended to prevent the local community reporting what they see. Often the criminals behind this don't even have to try hard to do this - instead relying on word of mouth and reputation. Over the past year, Organised Crime Groups (OCGs) and County Lines has seen a more targeted approach by Partnerships. This approach has worked so well that the two OCGs have been removed. However they are still monitored at the monthly Serious Crime & Tactical Meeting. The most common crime types associated with these groups is commonly organised theft.

The number of emerging trends which require an holistic approach around young people and perceived County Lines and Gang activity has increased. Locations where this type of activity has been raised and individuals reported as involved have been addressed via the CSU and Partnership. Task and Finish Groups have been successfully established and used to deliver on action plans tackling such community issues.

Acquisitive crime consists of Burglary (Residential and Commercial and Business) and Vehicle Crime (Theft of and Theft from - TOMV and TFMV). Although there have been rises and falls throughout the time period, the number of reported crimes are relatively low, but they do sit high in County comparisons. These types of crime have a high impact on the local community. There were decrease in both Burglary types. Burglary Residential from previous year (Oct 2019- Sept 2020) of 250 reported crimes 743 to 493 and a decrease of 18 reported crimes in Burglary Business & Commercial from 226 to 208. Theft from motor vehicle saw a decrease of 57 reported crimes from 548 to 491 as well as Theft of Motor Vehicle from 276 to 270, a decrease of 6 reported crimes.

**Serious and Acquisitive Crime including  
Organised Crime Groups, Emerging  
Trends and County Lines**

Priority Action		Lead Agency	Other Partners	By When
1.1	Link in with the work of the Kent Violence Reduction Unit and progress initiatives as appropriate	VRU	CSU Kent Police YOT	On Going
1.2	Through media campaigns and use of social media address perception of crime across the District as well as events and arrests. Work with residents and Town and Parish Councils	CSU	All Partners	March 2021
1.3	Work in Partnership to disrupt recognised OCGs, emerging trends and county lines	Serious Crime & Tactical Group	CSU All	On Going
1.4	CSU to offer reassurance and follow up visits following burglary and vehicle crime, including free giveaways to protect cars, out buildings. Greater use of Community Warden resource in follow up visits in communities where CWs are based.	CSU KCC Wardens	PCSOs	On Going
1.5	Deliver a parents event around knife crime/gangs	Kent Police	CSU	Dec 2021
1.6	Use the knife wands on Police operations and consider running a knife amnesty	Police	CSU	On Going



## Serious and Acquisitive Crime including Organised Crime Groups, Emerging Trends and County Lines

1.7	Work with young people to stop them becoming high risk or into the criminal justice system. Reduce numbers compared to previous year	KCC Youth Team Police	CSU	Ongoing
-----	---	--------------------------	-----	---------

### Anti-Social Behaviour including Environmental Crime

ASB accounts for the second largest recorded issue when compared to individual crime types in the District and makes up 23% of the total recorded figures when included in crime statistics. Figures show 2241 recorded incidents of ASB occurring within the District were reported to Kent Police. The District had the second lowest number of ASB reports in Kent and saw an increase of 48% (730 reports).

Edenbridge South & West had the highest number of reports of anti-social behaviour to the District Council. Farningham, Horton Kirby and South Darenth and Swanley, St Marys are joint 2<sup>nd</sup> highest with 10.

The highest type of anti-social behaviour reported is Nuisance Behaviour with 45 reports. This is followed by reports of Drugs misuse and dealing and vehicle related nuisance. Calls by type are always higher than reports received as residents can report more than one type at a time.

During the period of October 2019 and September 2020, 22 Anti-Social Behaviour warning letters and 7 Acceptable Behaviour Agreement contracts were issued to named individuals. Two Acceptable Behaviour Agreement Breach letters were also served.

The total number of calls received by SDC were slightly lower in the period from October 2019 until September 2020. The total number of calls received by the Council during October 2019 and September 2020 equals 98 calls. This is 24 less calls than the same period last year, when 122 calls were received, which equates to a 19% decrease in calls received.

### **SDC CCTV**

From 1<sup>st</sup> October 2019 to 30<sup>th</sup> September 2020, the CCTV Control Room at Sevenoaks District Council assisted the police with 101 arrests for this period; this is an increase from the previous year.

### **West Kent Housing**

WKHA received 541 complaints of antisocial behaviour and other community safety related matters for the period 1 October 2018 to 30 September 2019. This is an increase of 34% over the same period for the previous year.

### **SDC Environmental Health**

Between 1<sup>st</sup> October 2019 and 30<sup>th</sup> September 2020, the Environmental Protection Team received 2571 service requests relating to issues within Sevenoaks District.

Of the Service Requests received by Sevenoaks, 1488 relate to matters associated with anti-social behaviour (accumulations of rubbish, animal welfare, dog fouling, noise and nuisance). This is 376 more complaints than previous period.

### **SDC Direct Services**

**Flytipping** reports for the period October 2019 to September 2020, there were a total of 1513 fly tipping offences reported, which is an increase from last year of 394 and for the period of the enforced lockdown the increase of reported incidents was 139.

**A total of 140 investigations were undertaken by the team resulting in:**

- 10 cautions
- 4 Court Proceedings for S33(1)(a) (Fly tipping) and S34 (Duty of Care) Environmental Protection Act 1990 offences
- 17 Fixed Penalty Notices for of S33(1)(a) 90 and S34 90 offences
- 20 investigations resolved by providing words of advice
- It should be borne in mind that the Courts ability to deal with cases were severely disrupted by lockdown and legacy locked down measures.
- There are currently 6 prepared files with legal awaiting Court dates
- Approximately 120 S33/34 EPA 90 (letters of engagement) letters were sent

- Approximately 250 S46 EPA 90 (correct disposal of household waste) letters sent
- 15 KMIP (Kent and Medway Information Sharing Protocol) requests sent to Kent Police requesting vehicle and nominal checks

### **Graffiti**

Graffiti reports to the Council have increased by 4 reports this year with 37 recorded incidents (incl offensive).

There were 15 offensive graffiti reports between October 2019 and September 2020 all of which were removed within the 48 hour deadline set by Sevenoaks District Council.

### **KCC Community Wardens**

A valued element of the Community Warden role remains the uniformed presence which helps build community confidence and reassurance by reducing crime, the fear of crime, deterring ASB, improving access to local authorities and fostering social inclusion.

Whilst the role of the Community Warden is ever evolving, their over-riding objective remains '*to create safer and stronger communities*'. They work closely with/on behalf of other operational units within KCC and Community Safety Partners to address a wide range of issues

## ASB incl Environmental Crime

	Priority Action	Lead Agency	Other Partners	By When
2.1	<p>Increase number of enforcement interventions and prosecutions for fly tipping using all actionable evidence.</p> <p>Increase the number of partnership, cross border and community working actions in repeat locations.</p>	SDC Direct Services CSU	KCC Wardens PCSOs Housing Assoc	March 2022
2.2	Work with the VRU to address and reduce young adults behaviour where there is the potential to escalate	VRU	All Partners	March 2022
2.3	Identify perpetrators of ASB and undertake actions to cease their behaviour through the Community MARAC	All Partners		March 2022
2.4	<p>Continue to set up Task and Finish Groups to deliver a focused approach to reducing repeat ASB and use ASB Powers where appropriate such as Closure Orders, Community Protection Notices and Criminal Behaviour Orders. Invite Community Wardens to Task &amp; Finish Groups where issues pertain to their home communities. Team members have a great breadth of knowledge (issues, useful local stakeholders etc) that would enhance the partnership approach and ensuing actions.</p>	CSU	All	March 2021
2.5	Raise awareness of reporting ASB through social media, leaflets etc.	CSU	All Partners	Ongoing
2.6	<p>Continue operations to target ASB</p> <p>Safeguarding Concerns</p> <p>Mental Health</p> <p>Number of ASB Warning Letters, ABAs, CPWs and Covid Letters/Fines served during the COVID-19 crisis.</p>	CSU	All	On Going

## ASB incl Environmental Crime

	Priority Action	Lead Agency	Other Partners	By When
2.7	Work with KCC to increase number of referrals from their contextual safeguarding concerns to the Community MARAC	KCC Integrated Children's Services	CSU	April 2021

DRAFT

## Domestic Abuse including Stalking

**Please note:** Domestic Abuse incidents are not reported as violence against the person. If there has been no violence recorded. For example, if there was a verbal altercation, this would be recorded as a Domestic Abuse Incident and not Violence against the Person and that is why the numbers are different.

It is important to remember that these figures are only representative of domestic abuse that was reported to the Police and it is widely recognised that there is a figure of domestic abuse, which remains unreported. Kent figures for October 2018 - Sept 2018 rank Sevenoaks District as having the lowest numbers of reported domestic abuse in the County. Kent Police figures indicate the number of domestic abuse incidents for Sevenoaks District has been the lowest in Kent for the past three years.

SDC also funds DAVSS (Domestic Abuse Voluntary Support Services) which provides service for low and medium risk. In the period 1 October 2019 to 30 September 2019, they supported

Data Oct 19-Sept 20	q3 19-20	q4 19-20	q1 20-21	q2 20-21	Total
Nr of referrals	234	204	203	274	915
Male referrals	18	12	12	16	58
Children involved	303	304	357	460	1424
helpline calls	1172	750	1273	1618	4813
volunteer case work hours	4683	8072	5524	6257	24536
volunteer hours total	9204	11801	9799	10988	41792

Protection Against Stalking (PAS) seeks to raise awareness of stalking within the community and support victims of stalking and their families.

The PAS stalking advocacy support service is based in West Kent, during the period 1<sup>st</sup> October 2019 to 30<sup>th</sup> September 2020 we directly supported 222 stalking victims living in West Kent (202 female, 20 male, 57 high risk). 43 referrals came from the Sevenoaks area (39 female, 4 male, 9 High Risk).

35 clients were supported to obtain protective orders during this period, 9 protective injunctions were obtained by victims living in the Sevenoaks area.

2020 Referrals	Quarter 1	Quarter 2	Quarter 3	Quarter 4	Total
West Kent	49	73	89	73	284
Kent (Other)	11	20	24	38	93
Outside Kent	23	46	44	79	192
<b>TOTAL</b>	<b>83</b>	<b>139</b>	<b>157</b>	<b>190</b>	<b>569</b>
High Risk	6	32	53	43	87
Injunctions/Orders	1	10	14	11	36
Volunteer Hours	1597	1612	1671	1639	6519

### Domestic Abuse including Stalking

Priority Action	Lead Agency	Other Partners	By When
3.1 Raise public and professional awareness of Domestic Abuse by updating County websites, articles for partner agencies and T&Pcs	DAVSS WK Domestic Abuse Forum KCC Commissioned Service	All Partners	On Going

## Domestic Abuse including Stalking

Priority Action	Lead Agency	Other Partners	By When	
3.2	Work with DAVSS to ensure that all victims of domestic abuse can receive support	DAVSS	WK Domestic Abuse Forum	March 2021
3.3	Work with the KCC Commissioned services to ensure all victims in the borough receive the support they require	Lookahead	WK Forum	March 2021
3.4	Include standard and medium risk and repeat domestic abuse referrals in the Community Multi Agency Risk Assessment Conference	All Partners KCC Services Housing Associations	All Partners	On Going
3.5	Continue with funded services Freedom Programme, Community Domestic Abuse Perpetrators Programme, Recovery Tool Kit and DAY programme in schools. Promote the Cyber Stalking Clinic	SDC/CSP	DAVSS PAS Look Ahead	March 2022
3.6	Investigate match funding opportunities to promote Domestic Abuse services to victims and repeat victims	CSP West Kent Forum	All Partners	March 2022
3.7	Raise awareness of stalking with partners and the public	PAS	CSP	On Going
3.8	Continue to deliver training awareness raising for partners and local businesses to include resources such as lip balms and posters.	West Kent Forum	CSU	March 2022
3.9	Work with the commissioning provider to :- Continue to provide an IDVA and refuge	Look Ahead		Ongoing



## Domestic Abuse including Stalking

Priority Action	Lead Agency	Other Partners	By When
service to support high risk victims of domestic abuse within West Kent.	Look Ahead		March 2022
Run a suite of survivor programmes for female and male survivors including: Own My Life & Hope 2 Recovery	Look Ahead		March 2022
Virtual West Kent One Stop Shop. Work with local partners to build the virtual One Stop Shop model in West Kent and increase engagement through posters and partner liaison. Following easing of covid restrictions this should become a blended model with drop ins added.	Look Ahead	KFRS/Police	Ongoing
Training and Sanctuary Scheme- To continue to provide support to high risk victims who wish to remain in their homes by providing extra security items	Look Ahead		Ongoing
Emergency Accommodation- Provide overnight emergency accommodation for high risk victims needing to flee immediately	Look Ahead		Ongoing
Welfare Fund- Provide emergency funding for items such as furniture, white goods, food and travel to high risk victims in the community.	Look Ahead		Ongoing

## Domestic Abuse including Stalking

Priority Action	Lead Agency	Other Partners	By When
Obtain future funding to continue the Cyber clinic  Commission PAS to deliver a Stalking Workshop.	Look Ahead / PAS	PAS	Sept 2021

## Safeguarding including Young People, Vulnerable Adults, Child Sexual Exploitation, Modern Slavery, Human Trafficking, Prevent, Care Act and Mental Health

Safeguarding includes Young People, Vulnerable Adults, CSE, Modern Slavery, Human Trafficking, Prevent, Care Act, Missing Children and Mental Health.

Legislation places a statutory duty on local councils as well as some of the other partner agencies to protect the vulnerable under these crimes. It is also a major contributor to the Kent Police Strategy. The above are a community concern.

### Young People and Vulnerable Adults

Especially through COVID-19 there has been a high number of vulnerable adults and young people that have been victims of crime and suffering with mental health. The dedicated PCSOs in the CSU have been working with individuals and Community Wardens to put safeguarding measures in place.

### Counter Terrorism - Prevent Strategy

This analysis includes the number of calls/ incidents recorded post terrorists attacks in London. Reflecting an increased trust and confidence in the Police, increased alertness of communities and improved access to Police and partners has been made available. Levels of threat are very low in the District. There were three cases dealt with under Prevent Case Management (PCM) between 1 October 2019 - 30 September 2020, same as last year. All were found to have no

identifiable extremism concerns, but did have other vulnerabilities that needed action so were onward referred to the relevant partners.

### Human Trafficking and Modern Slavery

There were 2 trafficking offences reported to Police for Sevenoaks between 1 October 2019 - 30 September 2020.

### Child Sexual Exploitation (CSE)

According to Kent Police there were 4 reports of CSE in the Sevenoaks District. The Community Safety Manager continues to be a CSE Champion for the CSP and District Council.

## SAFEGUARDING (including Mental Health, Prevent, Modern Slavery, Human Trafficking, Gangs, Vulnerable Adults and Children)

	Priority Action	Lead Agency	Other Partners	By When
4.1	Work with Mental Health Services for all age groups especially around isolation and COVID-19 concerns	KCC Public Health	CSU	March 2022
4.2	Share good practice and models around safeguarding, link into local stakeholders including voluntary and community groups. Develop Mental Health support and first aid champions	CSU	Voluntary and Community Groups (Mind and Citizens Advice)	On Going
4.3	Work with the Local Strategic Partnership (LSP) on delivering key projects/sign posting around mental Health which is an LSP priority	LSP	All Partners	March 2022

**SAFEGUARDING (including Mental Health, Prevent, Modern Slavery, Human Trafficking, Gangs, Vulnerable Adults and Children)**

4.4	Work with Sevenoaks District Youth Assembly Forum and Local Children's Partnership on their Mental Health priorities for young people, addressing social isolation	CSU Youth Assembly Forum KCC	WKHA  SDC/CSU	March 2022
4.3	Work with Police to address Modern Slavery and Human Trafficking eg car washes, nail bars, and pop up brothels. Address evidence based issues.	Police SCD	CSU All	March 2022
4.4	Identify training needs for all safeguarding types and deliver on this training	CSU KCC	All Partners	March 2022
4.5	Attend Chanel Panels where appropriate and provide support to individuals when required and Promote the Prevent Strategy within the community via Social Media etc.	CSU KCC Prevent Team		March 2022
4.6	Run Prevent training for staff, partners and Members (as appropriate)	SDC	All Partners	March 2022

## Doorstep Crime including Scams and Cyber Crime

Doorstep Crime consists of Rogue Traders, Bogus Callers, Scams, Online Fraud (Cyber crime). This crime type affects many vulnerable residents and it can be detrimental to their mental health. Many people feel too embarrassed to report it and therefore this crime type is under reported until potentially a friend, relative or carer is made aware.

The KCC Community Wardens are working with a high number of vulnerable residents of all ages regarding scams. Through the CSU Daily Briefing, an increase in the number of these crimes reported has been recorded and examined. Incidents of Doorstep Crime have increased in from 2019/20 across the District. There were also increases in vulnerable victims, as well as increases in incidents.

### Doorstep Crimes incl Scams and Cyber Crime

Priority Action	Lead Agency	Other Partners	By When	
5.1	Communicate effective messages on how to report scams/doorstep crimes and raise awareness to remove stigma of embarrassment.	KCC Trading Standards	CSU	March 2022
5.2	Work with the KCC Doorstep crime analyst to progress a database for victims of doorstep crime	KCC Trading Standards	CSU	Sept 2021
5.3	Work with KCC Trading Standards to help reduce Door Step Crime and Bogus Callers across the District. Greater use of Community Wardens resource in FUVs to scam victims in CW home communities	KCC Trading Standards	KCC Community Wardens CSU	June 2021

## Doorstep Crimes incl Scams and Cyber Crime

5.4	Work in Secondary Schools and Youth Groups to incorporate into curriculum to stop cyber crimes for young people	CSU (Wardens and PCSO)	KCC Youth Services	March 2022
5.5	Working with Neighbourhood Watch to inform residents, voluntary organisations and partners on current scams especially COVID related	CSU Neighbourhood Watch	All Partners	On Going

## Substance Misuse

### Drugs

Drug offences have increased from 156 to 176 an increase of 18 reports. There was no recent information from Public Health on the Kents Portal so we can only go on last years data. 1 September 2018 - 31 August 2019 there were 308 admissions relating to 234 individuals for mental and behavioural disorders due to psychoactive substance use (including alcohol and drugs) in the District. This is the second lowest figure in Kent, and a decrease from last year.

### Alcohol

Until recently, alcohol misuse was measured using alcohol attributable hospital admission rates, which have been increasing year on year at a District and County level. It is generally felt that these rates no longer accurately reflect alcohol admission trends as some 'attributable' conditions have undergone massive rises in admission rates over recent years and the data is now only partly attributable to alcohol.

### Commissioned Services

Substance misuse treatment services in Sevenoaks District are provided by CGL, who are commissioned by Kent Public Health to deliver an integrated community drug and alcohol recovery service, offering integrated support to individuals

across West Kent.

CGL work closely with a range of partner agencies to improve outcomes for substance misusers. Greensands, a supported housing project in Sevenoaks, is assisted by CGL through the provision of group work and peer support to residents for their substance misuse.

The CSP also funds Kenward Trust to deliver Substance Misuse Youth Services Tier 1 and 2. During this last year from 1st October 2019 - 30 September 2020, Kenward in the community have delivered youth and community outreach. The work involves connecting with young people in communities where ASB has risen due to substance misuse.

The youth outreach works well with the CSU model and will support reported incidents within days or a couple of weeks depending on the level of other areas of concern.

The teams have focused on areas known as hotspots where ASB and substance misuse are identified through the CSU.

### Substance Misuse

	Priority Action	Lead Agency	Other Partners	By When
6.1	Deliver outreach work to designated areas to address substance misuse using CSU reports via the Daily Tasking	Kenward Trust	CSU Schools Youth Groups	March 2021
6.2	Develop a package around substance misuse for primary schools around positive choices to go alongside a parental package	Kenward Trust Addaction	CSU	Sept 2020
6.3	Promote Service Directory especially around health services including GPs	CCGs CSU	All Partners	March 2021
6.4	Work with young people around substance misuse, mental health and the impact of COVID19	Kenward Trust	CSU	On Going

## Substance Misuse

6.5	One You Team to continue to deliver Alcohol (Brief & Extended) and Mental Wellbeing (five ways to wellbeing) interventions to One You clients who are looking to change decrease their alcohol consumption or improve their mental wellbeing.	One You Team	All Partners	June 2021
-----	---	--------------	--------------	-----------

DRAFT



## **GLOSSARY:**

ASB - Anti-Social Behaviour

CDAP - Community Domestic Abuse Perpetrators Programme

CSE - Child Sexual Exploitation

CSP - Community Safety Partnership

CSU - Community Safety Unit

DAVSS - Domestic Abuse Volunteer Support Services

KCC - Kent County Council

KSCB - Kent Safeguarding Children's Board

KFRS - Kent Fire & Rescue Service

LCPB - Local Children's Partnership Board

MARAC - Multi Agency Risk Assessment

PAS - Protection against Stalking

PCC - Police & Crime Commissioner

PCSO - Police Community Support Officer

SCS - Specialist Children's Services

SDC - Sevenoaks District Council

YOT - Youth Offending Team

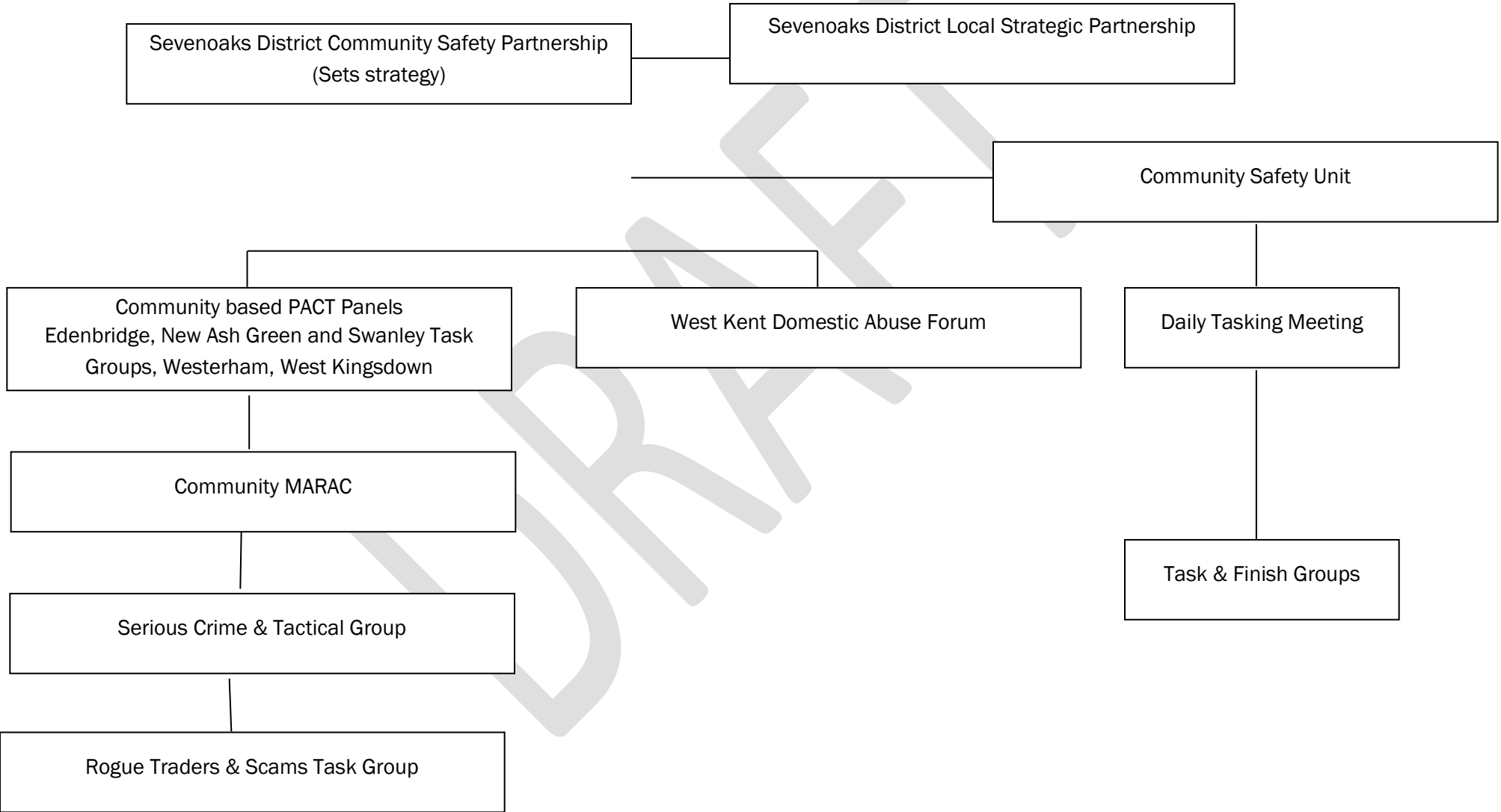
<b>Membership of the Community Safety Partnership and contact details</b>			
<b>Sevenoaks District Council</b> Argyle Road Sevenoaks Kent TN13 1GP Tel: 01732 227000 Web: <a href="http://www.sevenoaks.gov.uk">www.sevenoaks.gov.uk</a>	<b>Kent Police</b> 1 Pembury Road Tonbridge Kent TN9 2HS Tel: 01622 690690 Web: <a href="http://www.kent.police.uk">www.kent.police.uk</a>	<b>Kent Fire &amp; Rescue Service</b> West Group HQ Sevenoaks Fire Station London Road, Sevenoaks Tel: 01622 692121 Web: <a href="http://www.kent.fire-uk.org">www.kent.fire-uk.org</a>	<b>Police &amp; Crime Commissioner</b> Kent Police Headquarters Sutton Road Maidstone ME15 9BZ Tel: 01622 677055 Web: <a href="http://www.kentpa.kent.police.uk">www.kentpa.kent.police.uk</a>
<b>NHS West Kent CCG</b> Wharf House, Medway Wharf Road Tonbridge Kent TN9 1RE Tel: 01732 375200 Web: <a href="http://www.westkentpct.nhs.uk">www.westkentpct.nhs.uk</a>	<b>Kent Surrey and Sussex CRC Ltd</b> Maidstone Corporate Centre 3 <sup>rd</sup> Floor, Maidstone House King Street Maidstone Kent, ME15 6AW Tel: 01622 239147 Website: <a href="http://www.ksscrc.co.uk">www.ksscrc.co.uk</a>	<b>KCC Social Services</b> The Willows, Hilda May Ave, Swanley Kent BR8 7BT Tel: 0300 041 1400 Web: <a href="http://www.kent.gov.uk">www.kent.gov.uk</a>	<b>Imago</b> 17-19 Monson Road Tunbridge Wells Kent TN1 1LS Tel: 01892 530330 Web: <a href="http://www.imago.org.uk">www.imago.org.uk</a>
<b>KCC Early Help &amp; Preventative Service</b> C/o Swanley Youth Centre St. Mary's Road Swanley Kent BR8 7BU Tel 01322 615275 Web: <a href="http://www.kent.gov.uk">www.kent.gov.uk</a>	<b>Protection Against Stalking</b> Town Hall, Tunbridge Wells <a href="mailto:support@protectionagainststalking.org">support@protectionagainststalking.org</a> Enquiries <a href="mailto:office@protectionagainststalking.org">office@protectionagainststalking.org</a> Website <a href="http://www.protectionagainststalking.org">www.protectionagainststalking.org</a>	<b>KCC Community Safety Team</b> Maidstone Fire Station Loose Road Maidstone Kent ME15 9QB Web: <a href="http://www.kent.gov.uk">www.kent.gov.uk</a>	<b>West Kent Housing Association</b> 101 London Road Sevenoaks Kent TN13 1AX Tel: 01732 749400 Web: <a href="http://www.westkent.org">www.westkent.org</a>
<b>Kenward Trust</b> Kenward Road Yalding, Maidstone Kent ME18 6AH Tel: 01622 814187 Web: <a href="http://www.kenwardtrust.org.uk">www.kenwardtrust.org.uk</a>	<b>MOAT Homes</b> Galleon Boulevard Crossways Dartford Kent DA2 6QE Tel: 0300 323 0011 Web: <a href="http://www.moat.co.uk">www.moat.co.uk</a>	<b>West Kent Extra</b> 101 London Road Sevenoaks Kent TN13 1AX Tel: 01732 749400 Web: <a href="http://www.westkent.org">www.westkent.org</a>	<b>DAVSS</b> PO Box 530 Tunbridge Wells Kent TN2 9TB Tel: 01892 570538 Web: <a href="http://www.davss.org.uk">www.davss.org.uk</a>

## Terms of Reference

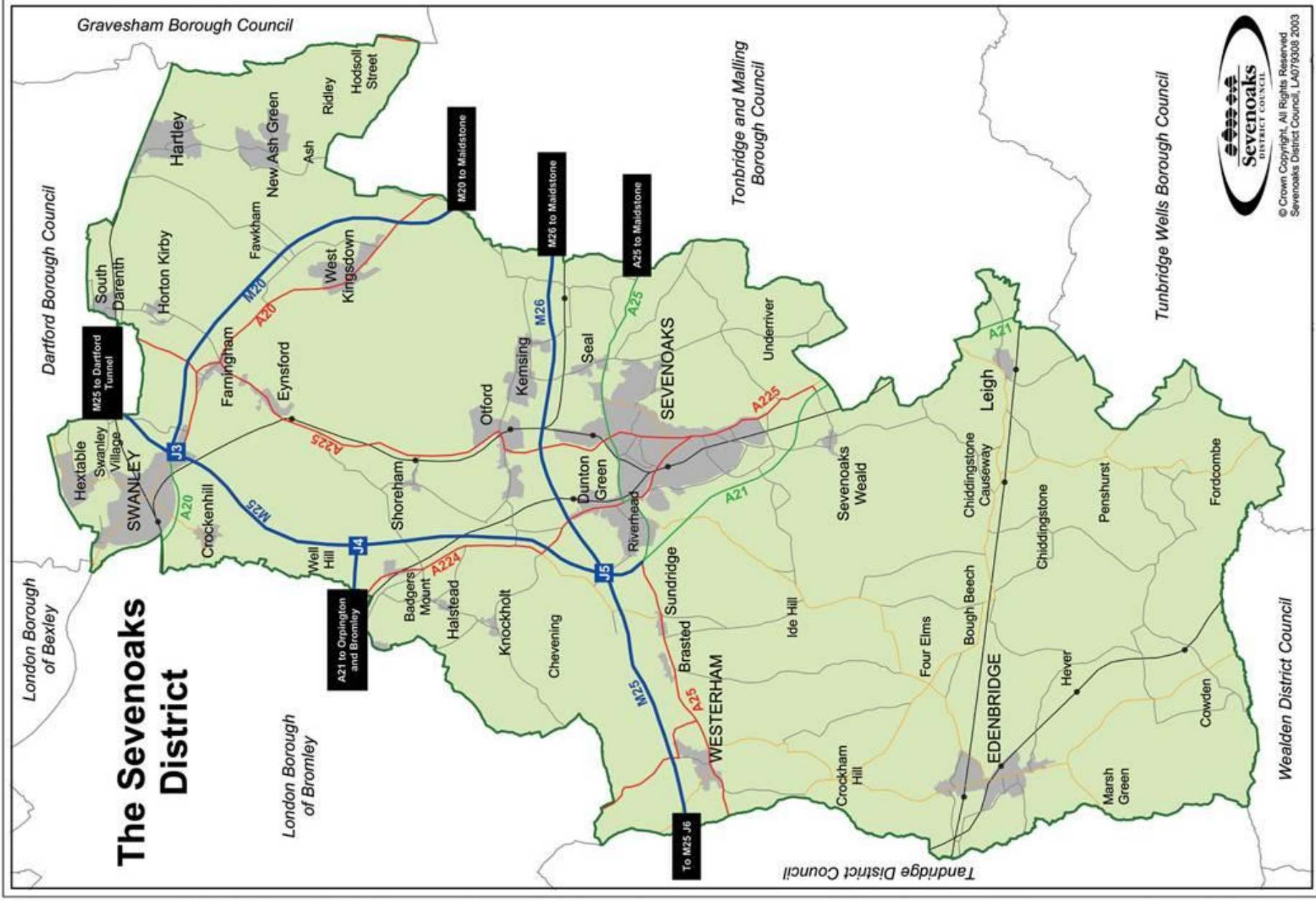
The Partnership's terms of reference are to:

- Undertake periodic reviews of community safety in the District and disseminate the findings to the public
- Develop a yearly strategy and action plan to tackle community safety
- Monitor and report progress in meeting the agreed targets and actions
- Secure resources and funding from parent organisations and others for projects to address agreed shared priorities in the Community Safety Action Plan
- Act as a forum for discussion of topical local community safety issues and agree follow up actions if appropriate
- Promote community safety in the District in conjunction with other local organisations and bodies
- Co-ordinate and maintain an overview of all activities relevant to community safety in the District.

# Structure and Meetings Sevenoaks District Community Safety Partnership Meetings



# The Sevenoaks District



© Crown Copyright, All Rights Reserved  
 Sevenoaks District Council, LA079308 2003

**Enquiries to:**

CSU

Sevenoaks District Council

PO Box 183, Argyle Road

Sevenoaks, Kent TN13 1GP

Telephone 01732 227000

Minicom 01732 227496

E-mail [community.safety@sevenoaks.gov.uk](mailto:community.safety@sevenoaks.gov.uk)

