

# Sevenoaks District

## Community Safety Partnership

### Annual Action Plan

### 2020-21 DRAFT



Introduction	Page 3
Priority issues 2020-21	Page 4
Success measures	Page 6
Serious & Acquisitive Crime incl OCG, Emerging Trends and County Lines	Page 7
Domestic Abuse	Page 9
Anti-Social Behaviour incl Environmental Crime	Page 12
Safeguarding including Young People, Vulnerable Adults, CSE, Modern Slavery, Human Trafficking, Prevent, Care Act and Mental Health	Page 16
Doorstep Crime incl Scams and Cyber Crime	Page 18
Substance Misuse	Page 20
Glossary	Page 23
Members of the Partnership	Page 24
Terms of reference	Page 25
Partnership structure	Page 26
Map of Sevenoaks District	Page 27

This publication is available in large print. For a copy call (01732 227414).

[www.sevenoaks.gov.uk](http://www.sevenoaks.gov.uk)

If you need help communicating with us or understanding this document, we can arrange for an interpreter to help you.

Please contact us on 01732 227000 stating your language and telephone number arranged

## Action Plan 2020-21

### Introduction

The Sevenoaks District Community Safety Partnership brings together all of the agencies in the District who can have an impact on crime, anti-social behaviour and the fear of crime. A list of partners is set out on page 24. The Partnership has 3 key aims. They are to:

- Reduce and detect crime
- Reduce anti-social behaviour and the fear of crime
- Strengthen community involvement

Each year the Partnership, in common with all of the Community Safety Partnerships in Kent, undertakes an assessment of crime and disorder in the District, using data provided by partners and feedback from residents. The assessment identifies the priority issues for the next year using the following rationale for each community safety type:

- Whether there is significant community concern
- Whether there is an increasing trend
- Whether it contributes to a high volume of crime
- The level of harm it causes

- How well it is performing compared with other parts of Kent
- Whether the Partnership can add value to the work

**This Action Plan identifies where we can best work together to achieve results.**

### **Priority Issues for 2020-2021**

The Strategic Assessment was undertaken during the winter of 2019 and identified six priorities for the Partnership to tackle during 2020-21. The data referred to in this Action Plan is based on the Strategic Assessment, and uses data between 1 October 2018 - 30 September 2019, unless otherwise stated. Trends in the identified priorities continue to be monitored on a quarterly basis and the first monitoring will be available in July 2020.

The six priorities, as ranked in the Strategic Assessment, are:

- Serious and Acquisitive Crime including Organised Crime Groups, Emerging Trends and County Lines<sup>1</sup>
- Domestic Abuse
- Anti-Social Behaviour incl Environmental Crime
- Safeguarding (including Prevent, Mental Health, Human Trafficking, Modern Slavery, CSE (Child Sexual Exploitation, Vulnerable Adults and Protecting Children)

---

<sup>1</sup> County Lines refer to organised ways of dealing drugs

- Doorstep Crime including Scams and Cyber Crime
- Substance Misuse

Although the Partnership's main focus will be the six priorities, it will continue to monitor and plan for trends in crime and other community safety issues and address them through the Community Safety Unit's daily briefings and other tasking arrangements in order to reduce recorded crime.

### **The Action Plan**

The following pages set out the overall targets for the Community Safety Partnership. The Action Plan does not include details of the numerous activities already undertaken by partners, town and parish councils, the voluntary sector and others as part of their day-to-day work, but highlights activities in addition to core work, which partners will undertake throughout the forthcoming year. All priorities include actions around public perception and reducing repeat offenders/victims.

### **Funding and monitoring**

Funding for the actions included within the Action Plan is available from a number of sources, including partners' own budgets, Police & Crime Commissioner's (PCC) funding which is allocated to district Community Safety Partnerships, Choosing Health funding and other small amounts of funding from a variety of sources.

Regular monitoring will take place to ensure that individual projects continue to deliver positive results as well as value for money and that this Action Plan is on target.

### **Equalities**

In preparing the action plan, issues such as equality and diversity were considered to ensure that everybody feels safe in the District.

## **SEVENOAKS DISTRICT COMMUNITY SAFETY PARTNERSHIP - ACTION PLAN 2020-2021**

### **SUCCESS MEASURES**

#### **All recorded crime**

All Victim Based Crime - Maintain position in the lowest 3 District/Borough in the County.

#### **Serious & Acquisitive Crime including Organised Crime Groups, Emerging Trends and County Lines**

Improve the position of Vehicle Crime and Burglary within the County

#### **Domestic Abuse**

Reduction in the percentage of repeat victims

#### **Anti-Social Behaviour**

An improvement in behaviour achieved in 80% of cases accepted by the Anti-Social Behaviour Task Group.

#### **Safeguarding (including Prevent, Mental Health, Human Trafficking, Modern Slavery, CSE (Child Sexual Exploitation), Vulnerable Adults and Protecting Children)**

All partners taking part in training in each of the safeguarding strands

#### **Doorstep Crime incl Scams and Cyber Crime**

Proactive initiatives on Door Step Crime and Cyber Crime delivered in partnership with County Analyst

## **Serious & Acquisitive Crime incl Organised Crime Groups, Emerging Trends and County Lines**

Criminals behind serious and tactical crime often intimidate and create fear, which is intended to prevent the local community reporting what they see. Often the criminals behind this do not even have to try hard to do this - instead relying on word of mouth and reputation. Over the past year, Organised Crime Groups and County Lines have seen a more targeted approach by Partnerships. There are two OCGs within the Sevenoaks District. A monthly meeting started in October 2017 to address OCGs and serious crime. The most common crime types associated with these groups is organised theft.

The number of issues, which require a holistic approach around young people and perceived County Lines and Gang activity, has increased. Locations where this type of activity has been raised and individuals reported as involved have been addressed via the CSU and Partnership. Task and Finish Groups have been successfully established and used to deliver action plans tackling such community issues.

Acquisitive crime consists of Burglary (Residential and Commercial and Business) and Vehicle Crime (Theft of and Theft from - TOMV and TFMV). Although there have been rises and falls throughout the time period, the number of reported crimes are relatively low, but they do sit high in County comparisons. These types of crime have a high impact on the local community. There was a slight increase in Burglary Residential from previous year (Oct 2017- Sept 2018) of 67

reported crimes 676 to 743 and a decrease of 39 reported crimes in Burglary Business & Commercial from 265 to 226. Theft from motor vehicle saw a decrease of 19 reported crimes from 567 to 548 and Theft of Motor Vehicle an increase from 208 to 276, an increase of 68 reported crimes.

Please note that in April 2017, Burglary was changed to Burglary Residential and Burglary Business and Community.

**Serious and Acquisitive Crime including Organised Crime Groups, Emerging Trends and County Lines**

Priority Action		Lead Agency	Other Partners	By When
1.1	Development of key partners to ensure better information sharing at Serious Crime & Tactical Group.	CSU	Kent Police YOT Housing Associations	May 2020
1.2	Through media campaigns and use of social media address perception of crime across the District as well as events and arrests. Work with residents and Town and Parish Councils	CSU	All Partners	March 2021



1.3	Work in Partnership to disrupt recognised OCGs, emerging trends and county lines	Serious Crime & Tactical Group	CSU All	On Going
1.4	Ensure information sharing from other Police Forces and YOT is passed onto relevant agencies in recognised and potential County Lines	Police YOT	All	May 2020
1.5	Police to liaise with CSU regarding acquisitive crime to reduce repeat victims. CSU to follow up by making reassurance visits and providing crime reduction devices	Kent Police CSU	KCC Wardens PCSOs Housing Assoc CCTV	March 2021
1.6	Deliver professional training and education to parents on addressing signs of County Lines	Kent Police	CSU - All Partners	October 2020
1.7	North West Kent Crime Prevention Panel to attend village days/fetes across the District	CSU	Police KCC Wardens	March 2021

## Domestic Abuse

Domestic abuse is not a crime category within its own right, nor is it only a subset of Violence against the Person.

The Home Office definition is any incident or pattern of incidents of stalking, harassment, controlling, coercive, threatening behaviour, violence or abuse between those aged 16 or over who are, or have been, intimate partners or family members, regardless of gender or sexuality. The abuse can encompass, but is not limited to, psychological, physical, sexual, financial and emotional abuse.

Domestic abuse incidents in the Sevenoaks District have increased by 77 crimes (3.7%). The District has the lowest number of Domestic Abuse incidents in the County (2161).

**Please note:** Domestic Abuse incidents are not reported as violence against the person. If there has been no violence recorded. For example, if there was a verbal altercation, this would be recorded as a Domestic Abuse Incident and not Violence against the Person and that is why the numbers are different.

It is important to remember that these figures are only representative of domestic abuse that was reported to the Police and it is widely recognised that there is a figure of domestic abuse, which remains unreported. Kent figures for October 2018 - Sept 2018 rank Sevenoaks District as having the lowest numbers of reported domestic abuse in the County. Kent Police figures indicate the number of domestic abuse incidents for Sevenoaks District has been the lowest in Kent for the past three years.

There have been no offences under the Female Genital Mutilation Act 2003 in the Sevenoaks District and none in the West division as a whole during the time period.

<b>Domestic Abuse</b>				
	<b>Priority Action</b>	<b>Lead Agency</b>	<b>Other Partners</b>	<b>By When</b>
2.1	Raise public and professional awareness of Domestic Abuse by updating County websites, articles for Housing Association and T&PC Newsletters.  Make sure internal policies are joined up on services to promote	DAVSS WK Domestic Abuse Forum KCC Commissioned Service	All Partners	On Going
2.2	Deliver a minimum of 3 of young people's programmes through schools and youth groups across the District. Link in with Youth Services	DAVSS YOT KCC Youth Services	WK Domestic Abuse Forum	March 2021

## Domestic Abuse

Priority Action		Lead Agency	Other Partners	By When
	including YOT			
2.3	<p>Deliver a minimum of 3 multi-agency and public training sessions to include:-</p> <p>Financial Abuse Stalking &amp; Harassment Cohesion &amp; Control MARAC Training</p> <p>Make sure health professionals are involved, health visitors, CCGs and Primary Care Networks</p>	<p>WK Domestic Abuse Forum CCGs SDC</p>	<p>DAVSS Protection Against Stalking</p>	<p>March 2021</p>
2.4	<p>Include standard and medium risk and repeat domestic abuse referrals in the Community Multi Agency Risk Assessment Conference</p>	<p>All Partners KCC Services Housing Associations</p>	<p>All Partners</p>	<p>On Going</p>

## Domestic Abuse

Priority Action	Lead Agency	Other Partners	By When	
2.5	Housing Associations to work with local food banks to refer DA victims attending the banks due to financial support	Moat Housing West Kent Housing	Churches	June 2020
2.6	Work with Revenues and Benefits Team to address financial abuse via Housing Associations and SDC Homeless Team	Moat Housing West Kent Housing SDC Homeless Team		March 2021
2.7	Continue with Op Encompass on Police working with schools and linking into MARAC process	Kent Police	WK Domestic Abuse Forum	June 2020
2.8	Continue with funded services Freedom Programme, Community Domestic Abuse Perpetrators Programme, Recovery Tool Kit and investigate Adverse Children's Experience programme	SDC/CSP	DAVSS PAS	March 2021
2.9	Investigate match funding opportunities to promote Domestic Abuse services to victims and repeat victims	CSP	All Partners	March 2021

## **Anti-Social Behaviour including Environmental Crime**

ASB accounts for the second largest recorded issue when compared to individual crime types in the District and makes up 16% of the total recorded figures when included in crime statistics. Figures show 1511 recorded incidents of ASB occurring within the District were reported to Kent Police. The District had the second lowest number of ASB reports in Kent and saw an increase of 6% (86 reports).

The CSU Daily tasking's meetings dealt with 538 ASB/Community Safety calls from October 2018 - September 2019. All actions were followed up and residents were kept updated in all actions unless they had been reported anonymously. SDC, Police, Community Wardens, West Kent Housing and SDC Environmental Heath attend the CSU daily tasking on a daily basis.

The top wards reporting incidents were Swanley, Edenbridge and Sevenoaks. The top categories were intimidation and harassment via neighbour nuisance. This is followed by reports of Noise and then Nuisance Behaviour. Calls by type are always higher than reports received, as residents can report more than one type at a time.

The total number of calls received by SDC between October 2018 and September 2019 was 122 calls. This is an increase of 23 calls (23%) compared to the same period last year, where 99 calls were received. During the same period, 30 Anti-Social Behaviour warning letters and 15 Acceptable Behaviour Agreement contracts were issued to named individuals responsible for incidents of Anti-Social Behaviour, through the Community Multi Agency Risk Assessment Conference process.

### **SDC CCTV**

From 1 October 2018 to 30 September 2019 the CCTV Control Room at Sevenoaks District Council assisted the police with 97 arrests; this is an increase from 86 the previous year.

### **West Kent Housing**

West Kent Housing Association received 404 complaints of antisocial behaviour for the period 1 October 2018 to 30 September 2019. This is a decrease of 71 reports over the same period for the previous year.

## **SDC Environmental Health**

Between 1 October 2018 and 30 September 2019, the Environmental Protection Team received 2506 service requests relating to issues within Sevenoaks District.

Of the 2506 service requests in the Sevenoaks District, 1112 relate to matters associated with anti-social behaviour (accumulations of rubbish, animal welfare, dog fouling, noise and nuisance) within Sevenoaks District. This is 125 fewer complaints than during the same period in 2017/2018.

The greatest proportion of complaints received (44% of the total) continue to relate to noise nuisance. Numbers of noise related complaints has dropped significantly when compared to the previous year (491 in 2018/2019 vs 580 in 2017/2018). It is unclear what has caused this reduction in complaints but it may be the case that the adoption of the NoiseApp is allowing the District to make noise assessments more quickly and accurately reducing the number of repeat complaints.

## **SDC Direct Services**

**Flytipping** reports for the period October 2018 to September 2019, numbered a total of 1119, which is a decrease of 5% from the previous period. Where evidence was available, 71 investigations were undertaken.

Prosecutions continue where evidence passes the CPS threshold test. Intelligence continues to be shared with Kent County Council Intelligence Unit and Kent Police. There were 5 Cautions issued for Section 34 EPA (Environmental Protection Act) 1990 (duty of care). 3 FPN's issued Section.5 Control of Pollution Act 1980 and 2 Section.34 EPA 1990. SDC led on 5 Prosecutions and assisted on 2 operations with Police and other agencies.

**Abandoned vehicles** there were 239 reports for the period October 2018 - September 2019. Of these, 20 vehicles were genuinely abandoned and removed, compared with 26 vehicles for the same period the previous year. The low proportion of vehicles removed is primarily due to the majority of those reported still either being driven or declared SORN (Statutory off Road Notice) and parked off-road.

The average time taken to remove abandoned vehicles up to 30 September 2019 was 4.33 days.

**Graffiti** reports to the Council have increased by 2 reports to 33 recorded incidents (incl offensive). There were 12 offensive graffiti reports between October 2018 and September 2019 all of which were removed within the 48 hour working day hour deadline set by Sevenoaks District Council.

### **KCC Community Wardens**

A valued element of the Community Warden role remains the uniformed presence which helps build community confidence and reassurance by reducing crime, the fear of crime, deterring ASB, improving access to local authorities and fostering social inclusion.

Whilst the role of the Community Warden is ever evolving, their over-riding objective remains '*to create safer and stronger communities*'. They work closely with/on behalf of other operational units within KCC and Community Safety Partners to address a wide range of issues

## ASB incl Environmental Crime

	Priority Action	Lead Agency	Other Partners	By When
3.1	Increase number of prosecutions for fly tipping using all actionable evidence. Increase more Partnership, Cross Border working and community action in repeat locations.	SDC Direct Services CSU	KCC Wardens PCSOs Housing Assoc	March 2021
3.2	Identify and support young adults where behaviour has the potential to escalate	YOT KCC Youth Services	All Partners	March 2021
3.3	Increase number of partners and referrals to Community MARAC	CSU	Social Landlords Mental Health Service	March 2021
3.4	Continue to set up Task and Finish Groups to deliver a focused approach to reducing repeat ASB and use ASB Powers where appropriate such as Closure Orders, Community Protection Notices and Criminal Behaviour Orders	CSU	All	March 2021
3.5	Deliver work within primary schools to address ASB, to include impact on local residents and community effect and consequences	CSU (ASB Officer, Community Wardens - SDC & PCSO Youth Officer)	Schools	March 2021
3.6	Deliver a new process for overt cameras to deter ASB across the District	CSU (Police Sgt & Community Safety Officer)		June 2021



## **Safeguarding including Young People, Vulnerable Adults, Child Sexual Exploitation, Modern Slavery, Human Trafficking, Prevent, Care Act and Mental Health**

### **Counter Terrorism - Prevent Strategy**

The number of calls/ incidents recorded post terrorists attacks in London and Manchester has risen, reflecting an increased trust and confidence in the Police, increased alertness of communities and improved access to Police partners. Levels of threat are very low in the District. There were three cases dealt with under Prevent Case Management (PCM) between 1 October 2018 - 30 September 2019. All were found to have no identifiable extremism concerns, but did have other vulnerabilities that needed action so were referred onwards to the relevant partners.

### **Human Trafficking and Modern Slavery**

There were five offences reported to Police for Sevenoaks District between 1 October 2018 - 30 September 2019.

Reports have been made to the CSU, joint visits with partner agencies have been made and individuals have been spoken to. Action has been taken where appropriate.

### **Child Sexual Exploitation (CSE)**

According to Kent Police there have been eight reports of CSE in the Sevenoaks District. This is low compared to other areas of the County. The Community Safety Manager continues to be a CSE Champion for the CSP and District Council.

Within Kent, the predominant type of CSE experienced is the 'Inappropriate Relationship'. However, other types include, 'Gangs', 'Peer to Peer' and 'Trafficking', but to a much lesser extent. There have been occasions in Kent where females who have initially been highlighted as potential victims have later come to notice as facilitators and potential perpetrators of CSE.

### **Young People and Vulnerable Adults**

From 14 September 2017, Kent Police changed their policing structure and with that incorporated dedicated PCSOs within the CSU to address Domestic Abuse, vulnerable young people and vulnerable adults.

**SAFEGUARDING (including Prevent, Modern Slavery, Human Trafficking, Gangs, Vulnerable Adults and Children)**

	Priority Action	Lead Agency	Other Partners	By When
4.1	Targeted delivery to prevent or deter Child Sexual Exploitation from Police data	Kent Police CSU	All Partners	March 2021
4.2	Work with Police to address Modern Slavery and Human Trafficking eg car washes, nail bars, and pop up brothels. Address evidence based issues.	Police SCD	CSU All	March 2021
4.3	Identify training needs for all safeguarding types and deliver on this training	CSU KCC	All Partners	March 2021
4.4	Reassess Mental Health Support Groups across the District. Look at providers and method of delivery	SDC Health Team	CSU	Sept 2020
4.5	Deliver a scoping exercise on current numbers on the safeguarding topics to deliver a proactive local plan	Kent Police CSU	All Partners	May 2020
4.6	Continue to develop Mental Health Crisis Drop In Service in Swanley	SDC	CSU	Mach 2020
4.7	Share good practice and models around safeguarding, link into local stakeholders including voluntary and community groups. Develop Mental Health support and first aid champions	CSU	Voluntary and Community Groups (Mind and Citizens Advice)	Dec 2020

## **Doorstep Crime including Scams and Cyber Crime**

Doorstep Crime consists of Rogue Traders, Bogus Callers, Scams, Online Fraud (Cyber crime). This crime type affects many vulnerable residents and it can be detrimental to their mental health. Many people feel too embarrassed to report it and therefore this crime type is under reported until potentially a friend, relative or carer is made aware.

The KCC Community Wardens are working with a high number of vulnerable residents of all ages regarding scams. Through the CSU Daily Briefing, an increase in the number of these crimes reported has been recorded and examined. Incidents of Doorstep Crime have increased in from 2017 across the District. There were also increases in vulnerable victims, as well as increases in incidents. Data from KCC is only currently for 2016-17.

## Doorstep Crimes incl Scams and Cyber Crime

Priority Action	Lead Agency	Other Partners	By When	
5.1	Communicate effective messages on how to report scams/doorstep crimes and raise awareness to remove stigma of embarrassment. Lobby upwards to promote national level response	KCC Trading Standards	CSU	March 2021
5.2	Map Agency resources and initiatives and deliver on targeted actions. Include Businesses and IT Media to help on resilience for residents	KCC Trading Standards CSU	County Group Police	Dec 2020
5.3	Deliver Cyber Stalking Training to professionals and community groups	PAS	CSU	March 2021
5.4	Deliver a minimum of 3 training sessions on scams for community and older people groups across the District	KCC Community Wardens Kent Police (PCSO Role)	Voluntary and community groups NatWest Bank	March 2021
5.5	Work in Secondary Schools and Youth Groups to incorporate into curriculum to stop cyber crimes for young people	CSU (Wardens and PCSO)	KCC Youth Services	March 2021
5.6	Link in with National Citizenship Service “No We Can”	CSU	All Partners	March 2021

## **Substance Misuse**

### **Drugs**

Drug offences are no longer recorded in the Victim Based Crime figures released by Kent Police. Drug offences have reduced from 151 to 133 a reduction of 18 reports (11.9%) and the District moved from 5<sup>th</sup> to 2<sup>nd</sup> lowest reported drug offences across Kent.

1 September 2018 - 31 August 2019 there were 308 admissions relating to 234 individuals for mental and behavioural disorders due to psychoactive substance use (including alcohol and drugs) in the District. This is the second lowest figure in Kent, and a decrease from last year.

### **Alcohol**

Until recently, alcohol misuse was measured using alcohol attributable hospital admission rates, which have been increasing year on year at a District and County level. It is generally felt that these rates no longer accurately reflect alcohol admission trends as some 'attributable' conditions have undergone massive rises in admission rates over recent years and the data is now only partly attributable to alcohol.

### **Commissioned Services**

Substance misuse treatment services in Sevenoaks District are provided by CGL, who are commissioned by Kent Public Health to deliver an integrated community drug and alcohol recovery service, offering integrated support to individuals across West Kent.

CGL work closely with a range of partner agencies to improve outcomes for substance misusers. Greensands, a supported housing project in Sevenoaks, is assisted by CGL through the provision of group work and peer support to residents for their substance misuse. A joint working programme has also been developed with Sevenoaks Area MIND to deliver CGL programmes on a weekly basis to Greensands residents and a bi-weekly drop in and referral service for MIND service users. This will facilitate better access to drug and alcohol services for these clients. Addaction are commissioned by Public Health to deliver services to young people.

The CSP also funds Kenward Trust to deliver Substance Misuse Youth Services Tier 1 and 2. During this last year from 1st October 2018 - 30 September 2017, Kenward in the community have delivered youth and community outreach. The work involves connecting with young people in communities where ASB has risen due to substance misuse.

The youth outreach works well with the CSU model and will support reported incidents within days or a couple of weeks depending on the level of other areas of concern.

The teams have focused on areas known as hotspots where ASB and substance misuse are identified. Main areas that were causes of concern were Bat and Ball train station, Greatness Park and West Kingsdown. These other areas where drug dealing has been an issue include the Vine, Dunton Green, Westerham and Swanley. The team have just started work in Hartley and New Ash Green. Cannabis is the biggest issue and has the potential to lead into dealing and even county lines issues.

The team has also worked with schools in the District using education and intervention, parent's talks and youth projects, together with activities Kenward has supported.

Safety in Action works with over 1000 young people aged 10-11 and on outreach session the teams work with groups of 5 to 40 young people, aged 13 to early 20s.

Most areas they work in have a core group who cause the most issues, this is normally groups of 10 but can go up to 30 young people, and sometimes certain families cause issues. With education, they reach over a 1000 young people aged 10 to early 20s and work with many adults at events giving education and advice.

## Substance Misuse

	Priority Action	Lead Agency	Other Partners	By When
6.1	Deliver outreach work to designated areas to address substance misuse using CSU reports via the Daily Tasking	Kenward Trust	CSU Schools Youth Groups	March 2021
6.2	Investigate how to get referrals from Troubled Families and YISP into Community MARAC for all 6 priorities. Adopt a robust referral process	YOT KCC CSU	All Partners	Sept 2020
6.3	Develop a package around substance misuse for primary schools around positive choices to go alongside a parental package	Kenward Trust Addaction	CSU	Sept 2020
6.4	Educate pharmacists around over counter misuse (prescribed drug abuse). Investigate disposable areas	CCGs Kenward Trust	CSU	March 2021
6.5	More joint up working around our District - what is the drug of choice, how we tackle this together	Kenward Trust Police Pubwatch	CSU	March 2021
6.6	Deliver Multi-Agency Road Shows or attend existing community events to deliver on all 6 priorities	CSU	All Partners	March 2021
6.7	Promote Service Directory especially around health services including GPs	CCGs CSU	All Partners	March 2021

## **GLOSSARY:**

ASB - Anti-Social Behaviour

CDAP - Community Domestic Abuse Perpetrators Programme

CSE - Child Sexual Exploitation

CSP - Community Safety Partnership

CSU - Community Safety Unit

DAVSS - Domestic Abuse Volunteer Support Services

KCC - Kent County Council

KSCB - Kent Safeguarding Children's Board

KFRS - Kent Fire & Rescue Service

LCPB - Local Children's Partnership Board

MARAC - Multi Agency Risk Assessment

PAS - Protection against Stalking

PCC - Police & Crime Commissioner

PCSO - Police Community Support Officer

SCS - Specialist Children's Services

SDC - Sevenoaks District Council

YOT - Youth Offending Team



## Membership of the Community Safety Partnership and contact details

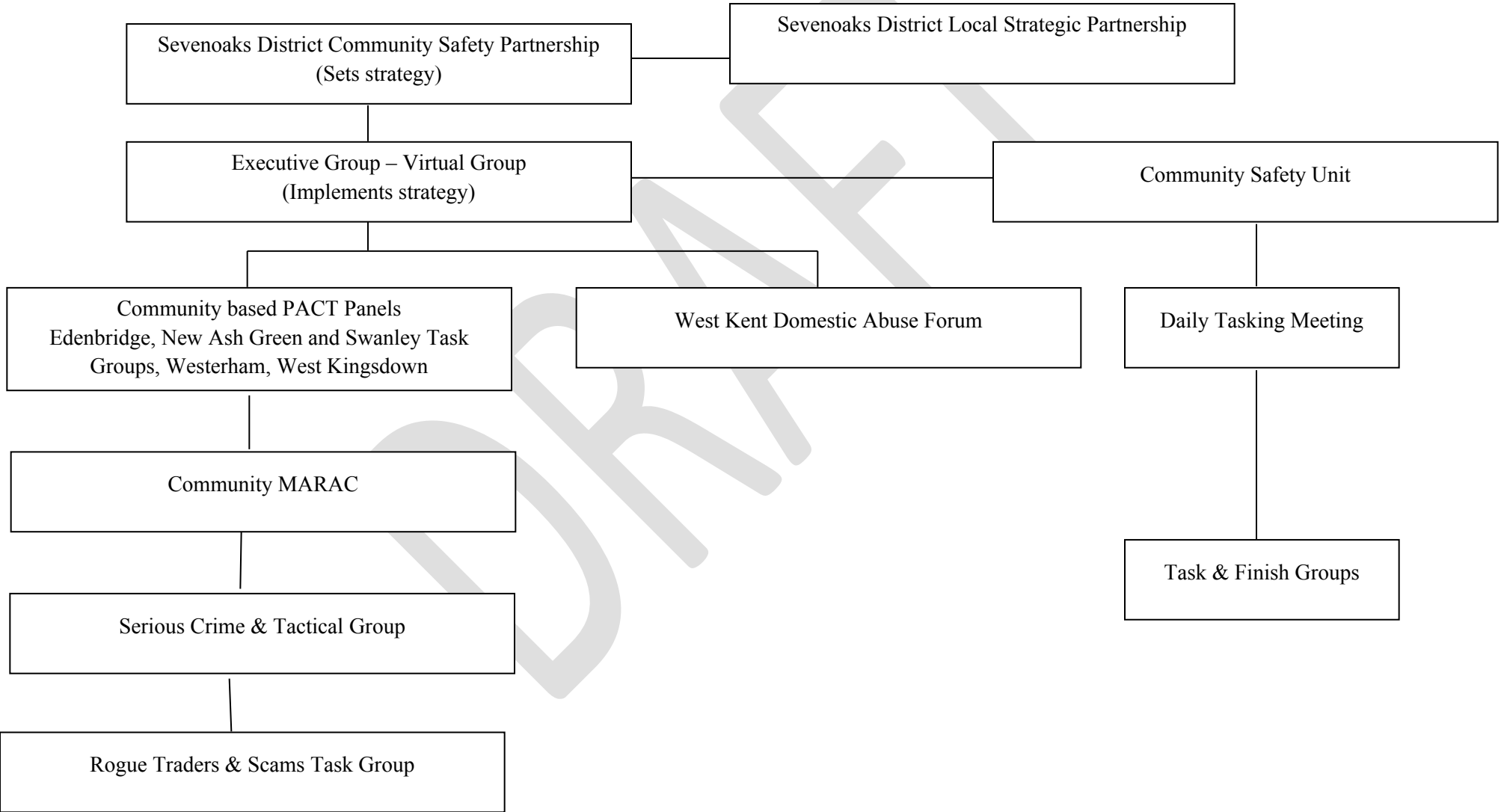
<p><b>Sevenoaks District Council</b> Argyle Road Sevenoaks Kent TN13 1GP Tel: 01732 227000 Web: <a href="http://www.sevenoaks.gov.uk">www.sevenoaks.gov.uk</a></p>	<p><b>Kent Police</b> 1 Pembury Road Tonbridge Kent TN9 2HS Tel: 01622 690690 Web: <a href="http://www.kent.police.uk">www.kent.police.uk</a></p>	<p><b>Kent Fire &amp; Rescue Service</b> West Group HQ Sevenoaks Fire Station London Road, Sevenoaks Tel: 01622 692121 Web: <a href="http://www.kent.fire-uk.org">www.kent.fire-uk.org</a></p>	<p><b>Police &amp; Crime Commissioner</b> Kent Police Headquarters Sutton Road Maidstone ME15 9BZ Tel: 01622 677055 Web: <a href="http://www.kentpa.kent.police.uk">www.kentpa.kent.police.uk</a></p>
<p><b>NHS West Kent CCG</b> Wharf House, Medway Wharf Road Tonbridge Kent TN9 1RE Tel: 01732 375200 Web: <a href="http://www.westkentpct.nhs.uk">www.westkentpct.nhs.uk</a></p>	<p><b>Kent Surrey and Sussex CRC Ltd</b> Maidstone Corporate Centre 3<sup>rd</sup> Floor, Maidstone House King Street Maidstone Kent, ME15 6AW  Tel: 01622 239147 Website: <a href="http://www.ksscrc.co.uk">www.ksscrc.co.uk</a></p>	<p><b>KCC Social Services</b> The Willows, Hilda May Ave, Swanley Kent BR8 7BT Tel: 0300 041 1400 Web: <a href="http://www.kent.gov.uk">www.kent.gov.uk</a></p>	<p><b>Imago</b> 17-19 Monson Road Tunbridge Wells Kent TN1 1LS Tel: 01892 530330 Web: <a href="http://www.imago.org.uk">www.imago.org.uk</a></p>
<p><b>KCC Early Help &amp; Preventative Service</b> C/o Swanley Youth Centre St. Mary's Road Swanley Kent BR8 7BU Tel 01322 615275 Web: <a href="http://www.kent.gov.uk">www.kent.gov.uk</a></p>	<p><b>KCC Trading Standards Public Protection</b> 1st Floor, Invicta House, Maidstone, Kent ME14 1XX  Web: <a href="http://www.kent.gov.uk">www.kent.gov.uk</a></p>	<p><b>KCC Community Safety Team</b> Maidstone Fire Station Loose Road Maidstone Kent ME15 9QB  Web: <a href="http://www.kent.gov.uk">www.kent.gov.uk</a></p>	<p><b>West Kent Housing Association</b> 101 London Road Sevenoaks Kent TN13 1AX Tel: 01732 749400 Web: <a href="http://www.westkent.org">www.westkent.org</a></p>
<p><b>Kenward Trust</b> Kenward Road Yalding, Maidstone Kent ME18 6AH Tel: 01622 814187 Web: <a href="http://www.kenwardtrust.org.uk">www.kenwardtrust.org.uk</a></p>	<p><b>MOAT Homes</b> Galleon Boulevard Crossways Dartford Kent DA2 6QE Tel: 0300 323 0011 Web: <a href="http://www.moat.co.uk">www.moat.co.uk</a></p>	<p><b>West Kent Extra</b> 101 London Road Sevenoaks Kent TN13 1AX Tel: 01732 749400 Web: <a href="http://www.westkent.org">www.westkent.org</a></p>	<p><b>DAVSS</b> PO Box 530 Tunbridge Wells Kent TN2 9TB Tel: 01892 570538 Web: <a href="http://www.davss.org.uk">www.davss.org.uk</a></p>

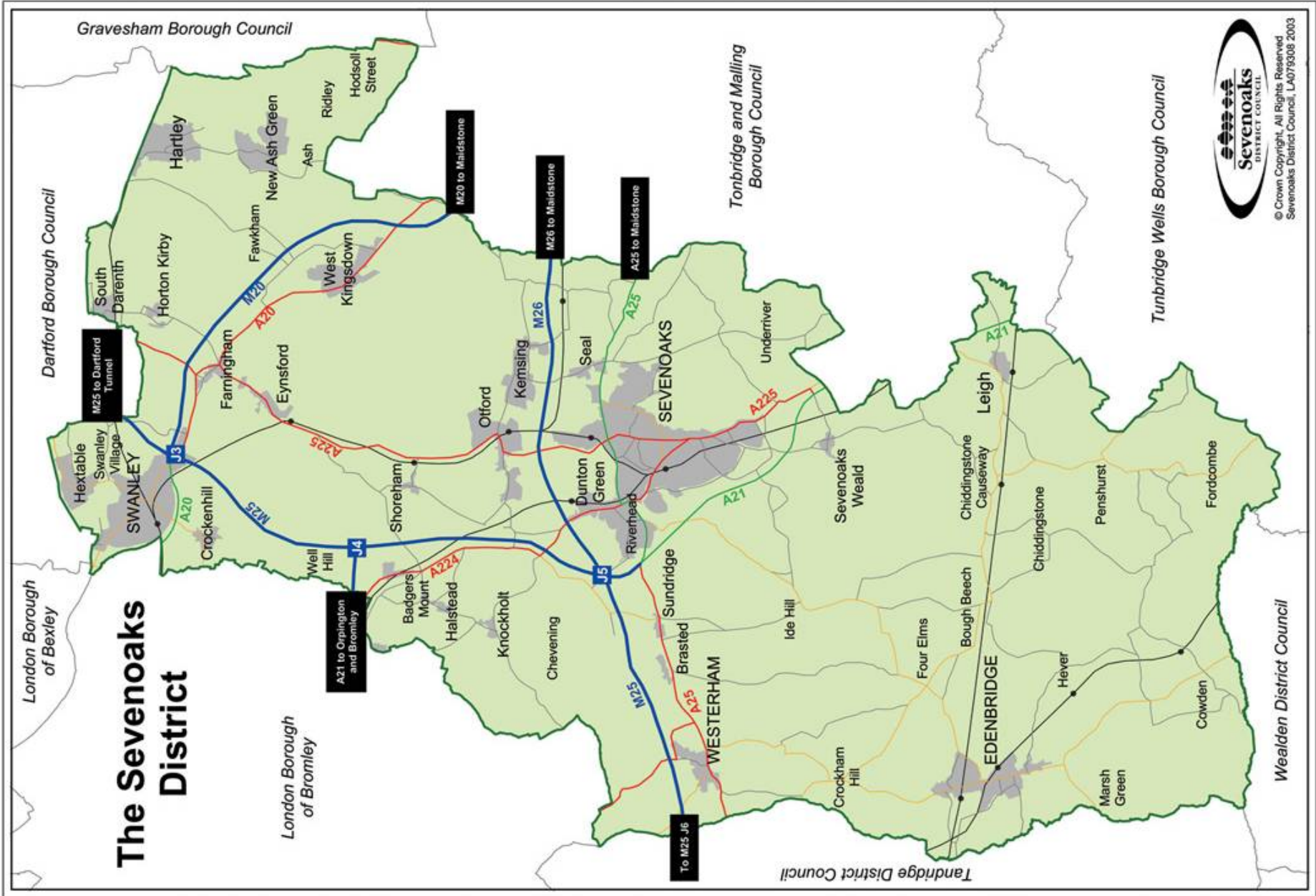
## Terms of Reference

The Partnership's terms of reference are to:

- Undertake periodic reviews of community safety in the District and disseminate the findings to the public
- Develop a yearly strategy and action plan to tackle community safety
- Monitor and report progress in meeting the agreed targets and actions
- Secure resources and funding from parent organisations and others for projects to address agreed shared priorities in the Community Safety Action Plan
- Act as a forum for discussion of topical local community safety issues and agree follow up actions if appropriate
- Promote community safety in the District in conjunction with other local organisations and bodies
- Co-ordinate and maintain an overview of all activities relevant to community safety in the District.

# Structure and Meetings Sevenoaks District Community Safety Partnership Meetings





DRAFT

**Enquiries to:**

Community Safety Manager  
Sevenoaks District Council  
PO Box 183, Argyle Road  
Sevenoaks, Kent TN13 1GP  
Telephone 01732 227000  
Minicom 01732 227496  
E-mail [community.safety@sevenoaks.gov.uk](mailto:community.safety@sevenoaks.gov.uk)

