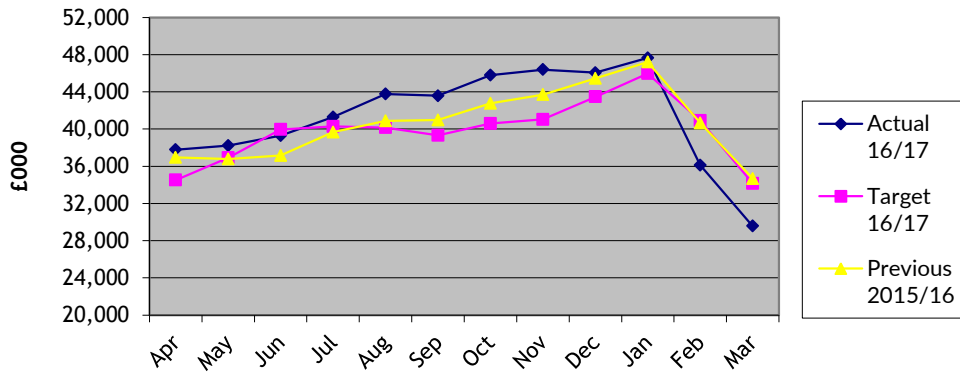
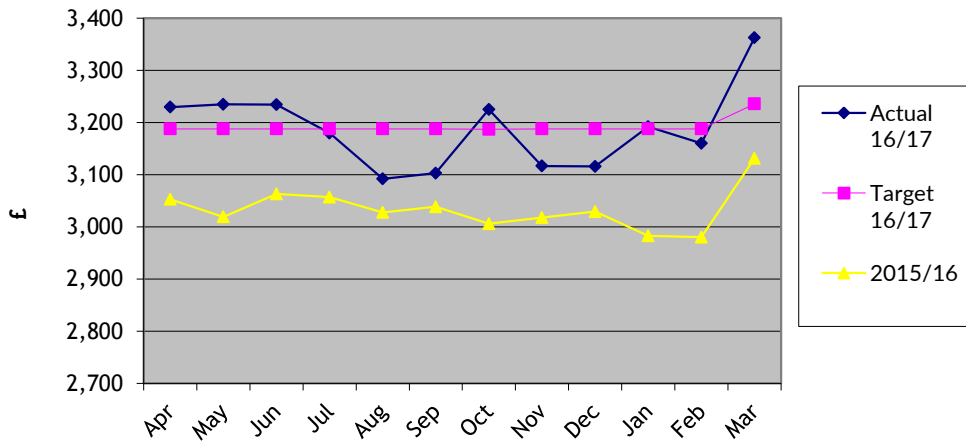


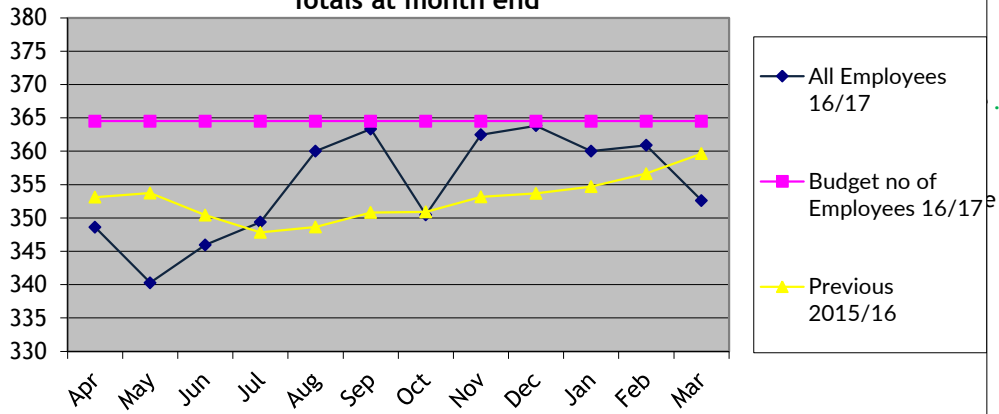
Graph 1 - Monthly Investment Balance



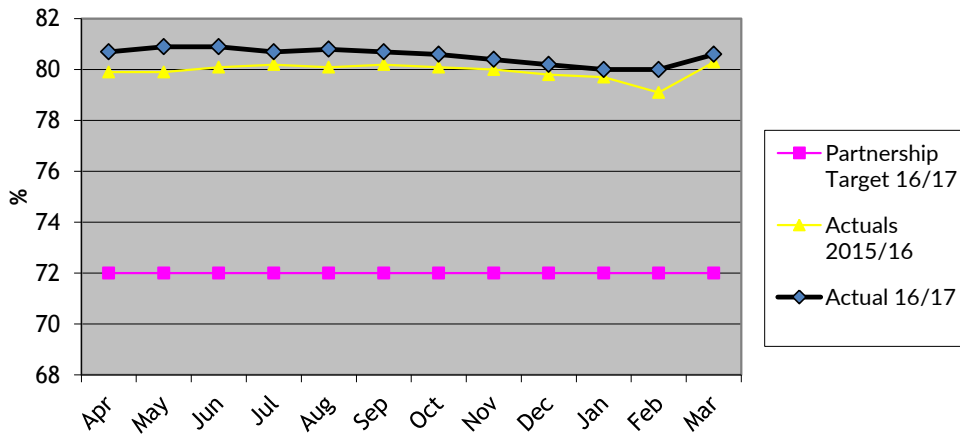
Graph 2 - Av. monthly cost per fte of staff on SDC payroll



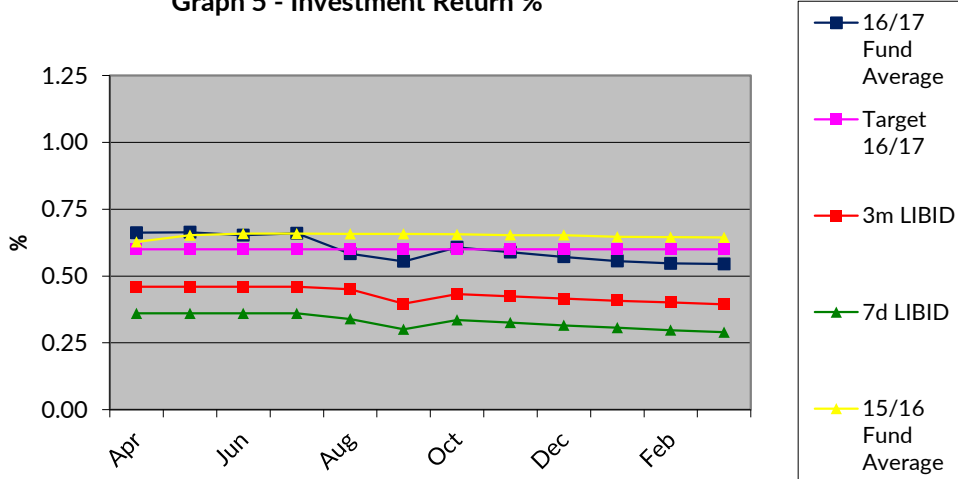
**Graph 3 - Number of Directly Employed ftes
(includes externally funded staff)
Totals at month end**



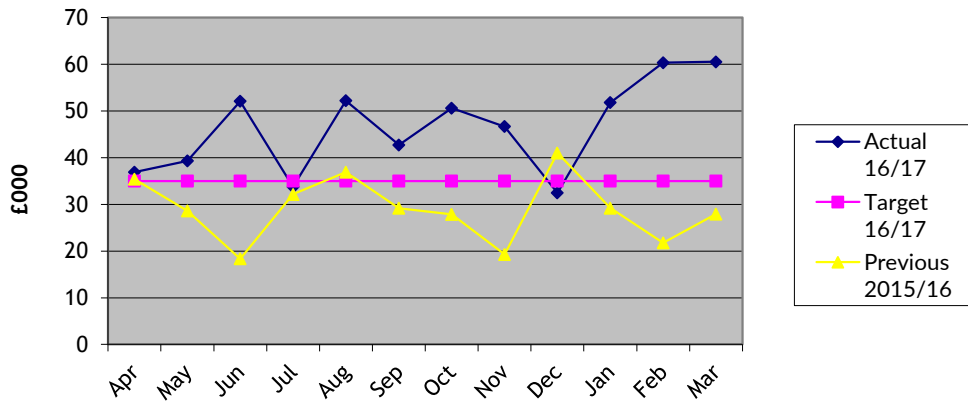
Graph 4 - Council Tax % on direct debit



Graph 5 - Investment Return %



Graph 6 - Sundry debts over 21 days



Graph 7 - Sundry debts over 61 days

