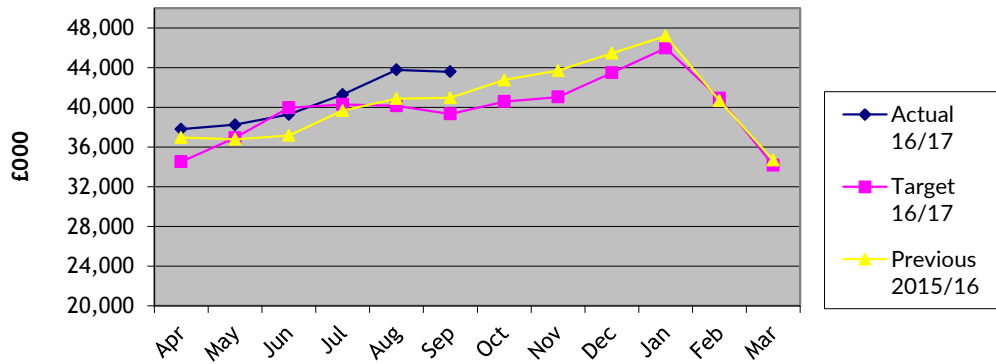


**Finance Advisory Committee Finance Indicators 2016/17
as at end September 2016**

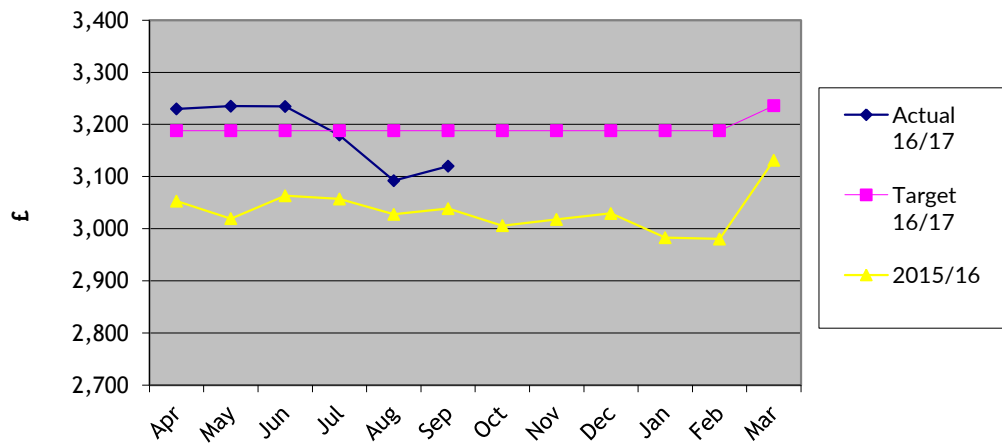
Description	target	actual	Variance		notes	graph
Monthly investment balance £000	40,900	43,581	2,681	6.6%	Total investments at month end. Since April 2013, precepts are paid in 12 instalments of roughly £5m. (Previous years we paid in 10 instalments - not June or December). .	1
Average monthly cost per employee £	3,192	3,179	-13	-0.4%	Target is annual pay budget divided by budget ftes.	2
Average monthly salary cost SDC £'000	1,162	1,114	-48	-4.1%	The average monthly salary cost (ie employees on SDC payroll) is below budget as the number of directly employed staff is below budget. This indicator refers to directly employed staff only. The costs of agency staff paid on invoices are excluded.	
Number of employees (full time equivalent)	364.5	363.3	-1.2	-0.3%	Target is budgeted ftes. Some posts are temporarily vacant to meet the requirement for the vacancy budget; some covered by agency staff and others vacant pending recruitment.	3
Council Tax % collected for 2016/17	58.7	58.6	-0.1	-0.2%	LPIFS 19. Monthly cumulative figures The amount collected in 16/17 is higher than 15/16 as the tax base is rising.	-
NNDR % collected for 2016/17	57.3	57.4	0.1	0.2%	LPIFS 20. Monthly cumulative figures.	-
Council Tax payers % on direct debit	72.0	80.7	8.7	12.1%	LPIFS 8 - % on direct debit; this is a Partnership target	4
Investment return % 3 month LIBID 7 day LIBID	0.60	0.56 0.40 0.30	-0.04	-7.5%	Cumulative return on investments. Target is budget assumption	5
Sundry debtors: debts over 21 days £000	35	43	8	22.0%	21 days is taken as the base as the first reminder is issued after 3 wks. The normal payment terms for public sector organisations is 30 days Following the recent re-organisation, resources were focussed on other areas.	6
Sundry debtors: debts over 61 days £000	20	32	12	62.4%	61 days is when the third reminder is issued (debts exclude items on 'indefinite hold', e.g. debtors in administration) Following the recent re-organisation, resources were focussed on other areas.	7

**Finance Advisory Committee Finance Indicators 2016/17
as at end September 2016**

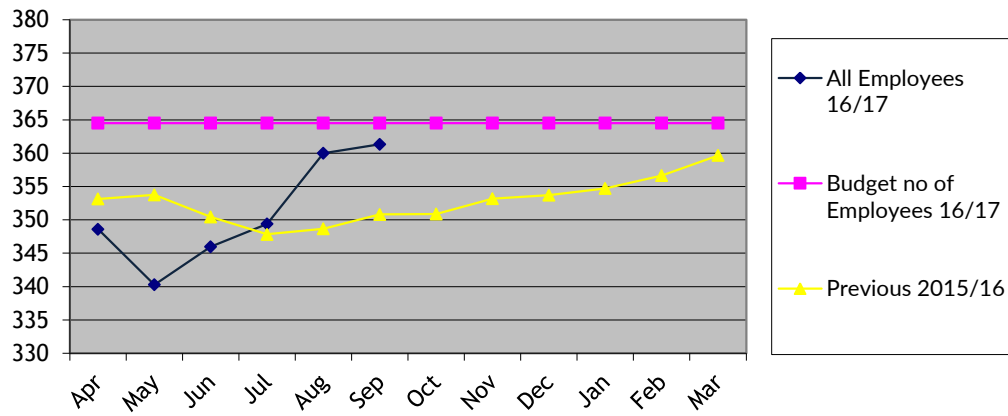
Graph 1 - Monthly Investment Balance



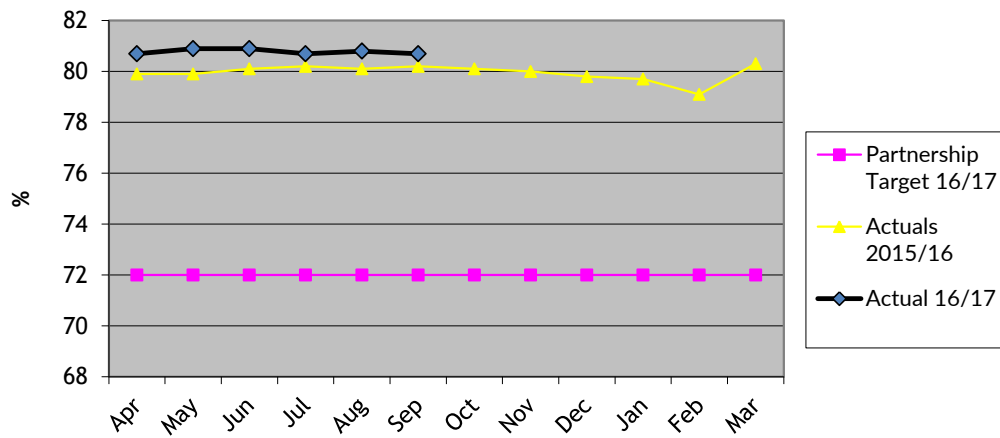
Graph 2 - Av. monthly cost per fte of staff on SDC payroll



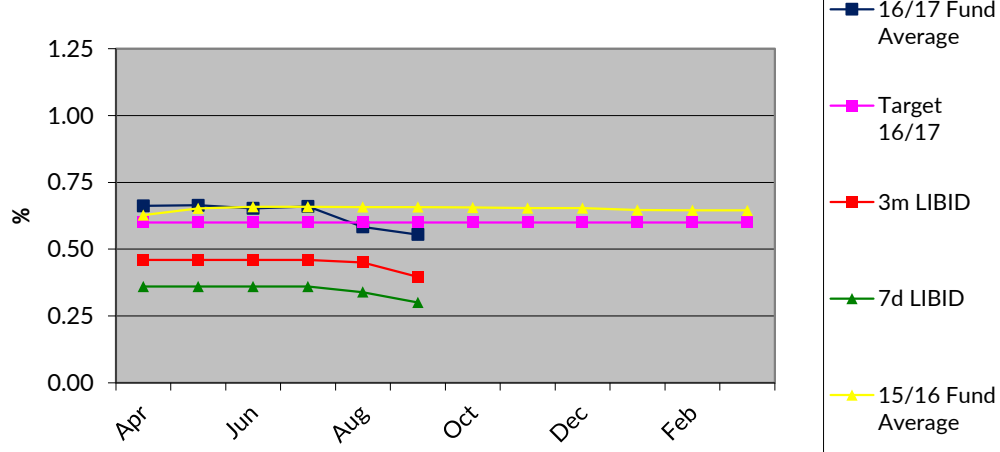
**Graph 3 - Number of Directly Employed ftes
(includes externally funded staff)**



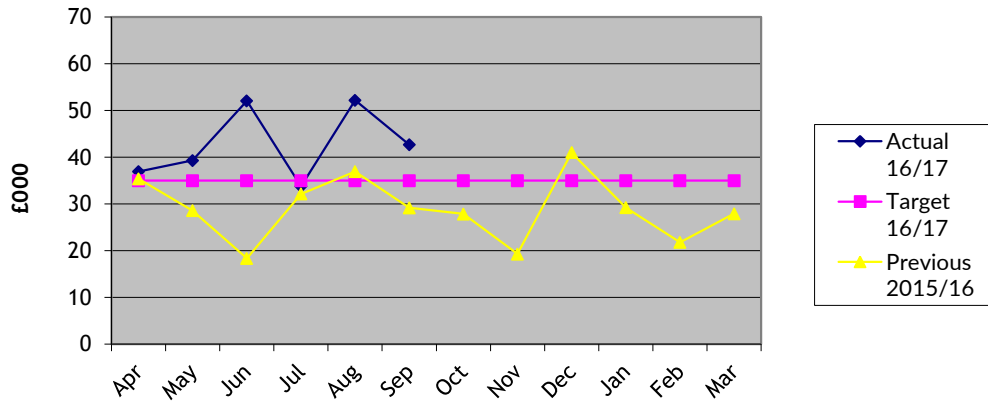
Graph 4 - Council Tax % on direct debit



Graph 5 - Investment Return %



Graph 6 - Sundry debts over 21 days



Graph 7 - Sundry debts over 61 days

