



**KCC Early Help & Preventative  
Services**

**Childrens Centres Sevenoaks District**

Presentation

Sevenoaks Health Liaison Board

16 September 2015

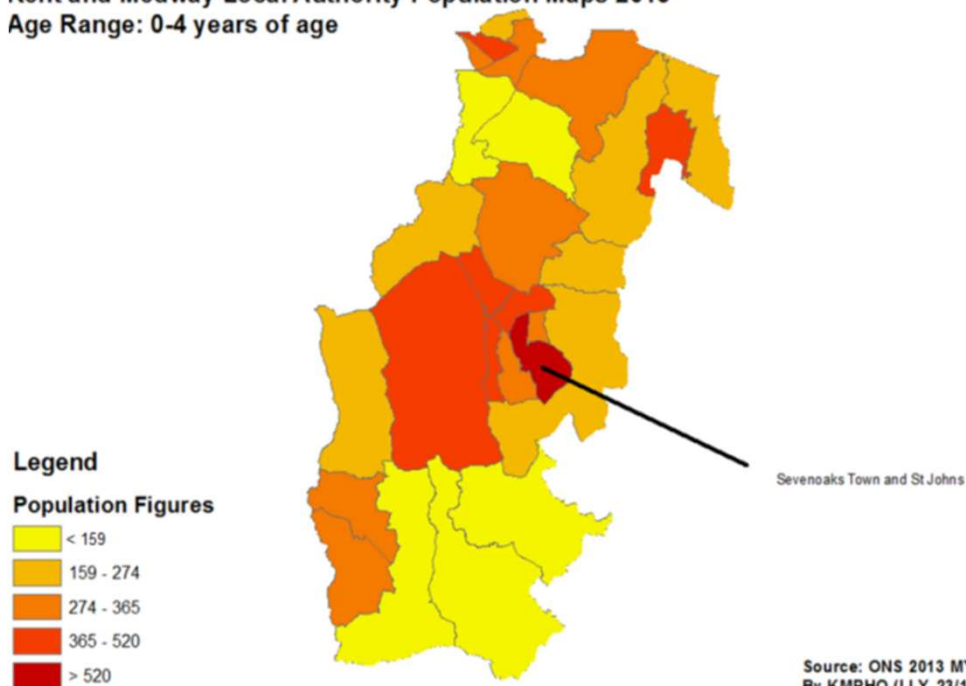
# Core Purpose

- TO IMPROVE OUTCOMES FOR YOUNG CHILDREN AND THEIR FAMILIES AND REDUCE INEQUALITIES BETWEEN THOSE IN GREATEST NEED AND THEIR PEERS IN:
  - Child development and school readiness
  - Parenting aspiration and parenting skills
  - Child and family health and life chances

# Profile

- Total number of 0-4 year olds = 7267
- Highest % in Sevenoaks Town St Johns

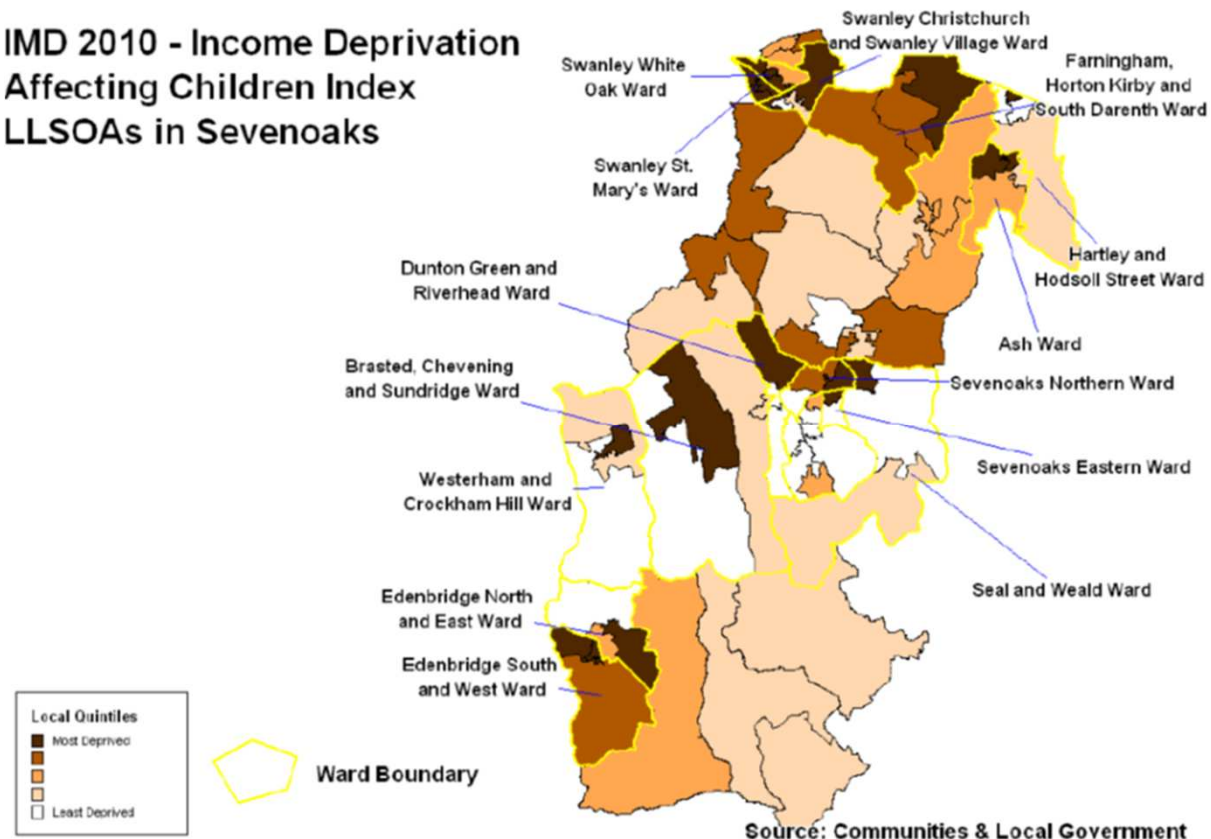
Kent and Medway Local Authority Population Maps 2013  
Age Range: 0-4 years of age



Source: ONS 2013 MYE  
By KMPHO (LLY, 23/10/2014)

# LSOAs

## IMD 2010 - Income Deprivation Affecting Children Index LLSOAs in Sevenoaks



# Centres in Sevenoaks District = 5

- Swanley (Hub)
- New Ash Green
- Edenbridge
- Sevenoaks (Springhouse)
- West Kingsdown (part time)

# The Partnership

- Public Health
- Social Care
- Libraries
- Adult Education
- Midwifery
- JCP
- Voluntary Sector
- Commissioned Providers: PSB, CXK etc
- Sevenoaks District Council



# Framework OFSTED Inspections



- Overall Effectiveness
- Access to services by young children and families
- Quality and Impact of practices and services
- Effectiveness of leadership and governance and management



# Access to Services

- *Local Priorities:*
- Increase Reach
- Target LSOAs
- Increase FF2 uptake
- Increase reach to SCS families
- Increase BME



# Quality and Impact of Practices and Services

- *Local Priorities:*
- Increase breastfeeding rates (Swanley)
- Obesity
- Immunisation rates
- Accidents/injuries
- Adult Learning / Volunteering / Return to work
- Increase take up of FF2 entitlement

# Effectiveness of leadership and governance and management

## *Local Priorities:*

- Improve Strategic Partnerships of DAB
- Parental Involvement in service design
- Workforce Development
- Monitoring and Evaluation / Data Collection

# Progress

- Breastfeeding PSB delivering peer support programme in CCs
- FF2 – Direct contact / Health Clinics
- SCS children – Link social worker / attendance conferences – plan
- Reach – casework to targeted families via Early Help Notification process
- Infant well being – 1 and 2 year checks established at CCs
- Parenting Support – Accredited programmes delivered at CCs
- Adult education offer within local CCs
- Volunteer programme and pathway for parent/users established

# Snapshot

Registrations at CCs 69.6% Reach 40.2 %

SCS CP 69% Reach 37.5%

SCS CIN 55.9% Reach 36.4%

GLD (Good level of development) 74.1%

Infants breastfed at 8 weeks 87.4% \*

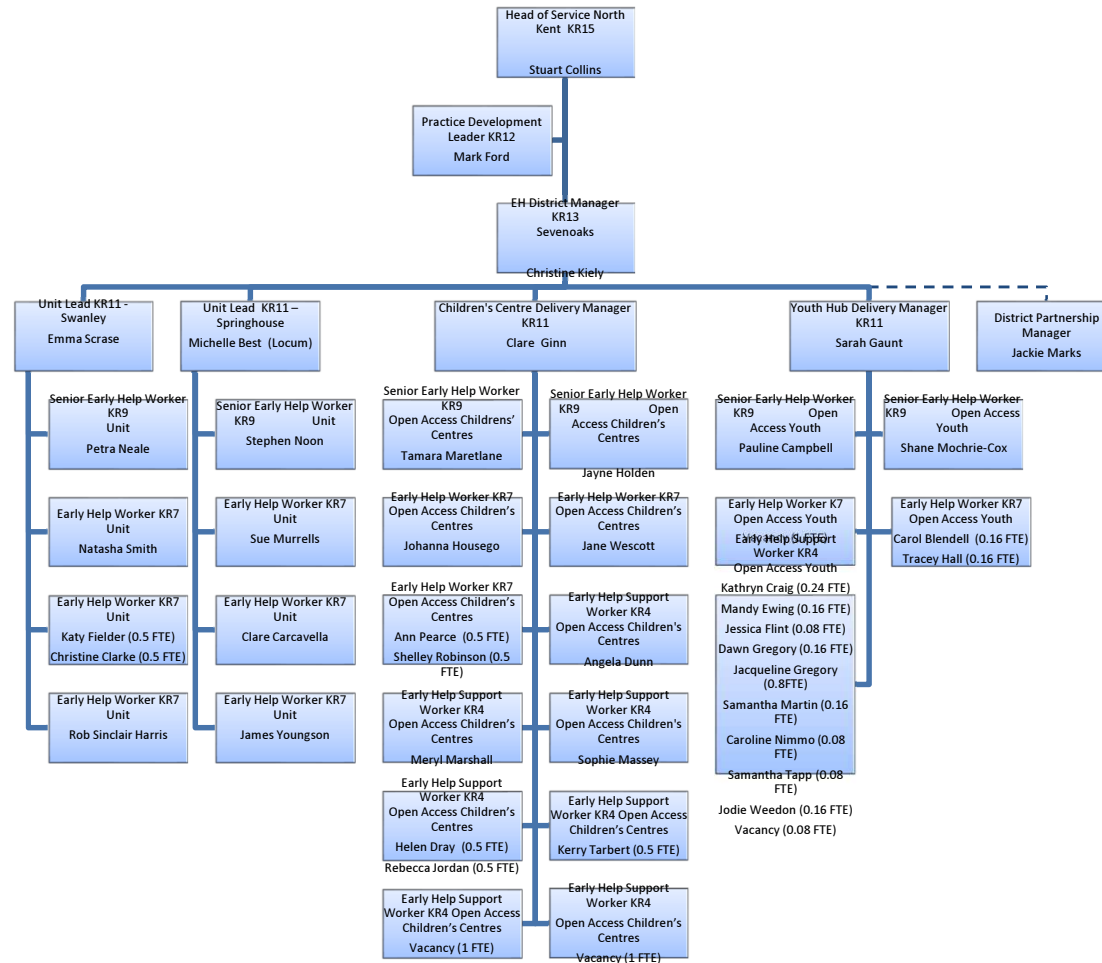
Immunisations 94.9%

Reception children who are obese 7.5%

Accident rates 13.6%

Free for 2 Entitlement 56.3%

# KCC EHPS (inc. Childrens Centres) Structure Chart Sevenoaks District



# Sevenoaks Children's Centres

