

Early Help and Preventative Services

16 September 2015

Stuart Collins
Head of Early Help and Preventative Services 0-25
North Kent



Early Help and Preventative Services

County wide 0-19 (and up to 25) service

4 Areas

4-Area Heads of Service with County Wide Leads

3 Districts in each area

12-District Managers

Open Access (universal)

Targeted work in Units

4-Area Education Leads for Attendance and Inclusion

District Troubled Families Leads

Centralised YOS functions

Centralised referral team – Triage

Centralised PRU, Attendance and Inclusion Service

Heads of Service

	Area	County role
North Stuart Collins	Dartford Gravesham Sevenoaks	Safeguarding and Health
West Nick Fenton	Maidstone Tonbridge & Malling Tunbridge Wells	0-5
East Nigel Baker	Canterbury Swale Thanet	Adolescent (Youth Offer, incorporating Duke of Edinburgh, Youth Participation and Outdoor Education)
South Louise Fisher	Ashford Shepway Dover	5 – 11

Priority Areas

- Safeguarding children and young people from harm
- Preventing problems escalating;
- Focusing services on high need families;
- Improving outcomes for, and meeting the needs of vulnerable children and adolescents;
- Ensuring support to make difference in early years;
- Improving emotional health and wellbeing of children and young people;
- Ensuring early support for disabled children, young people and their families.

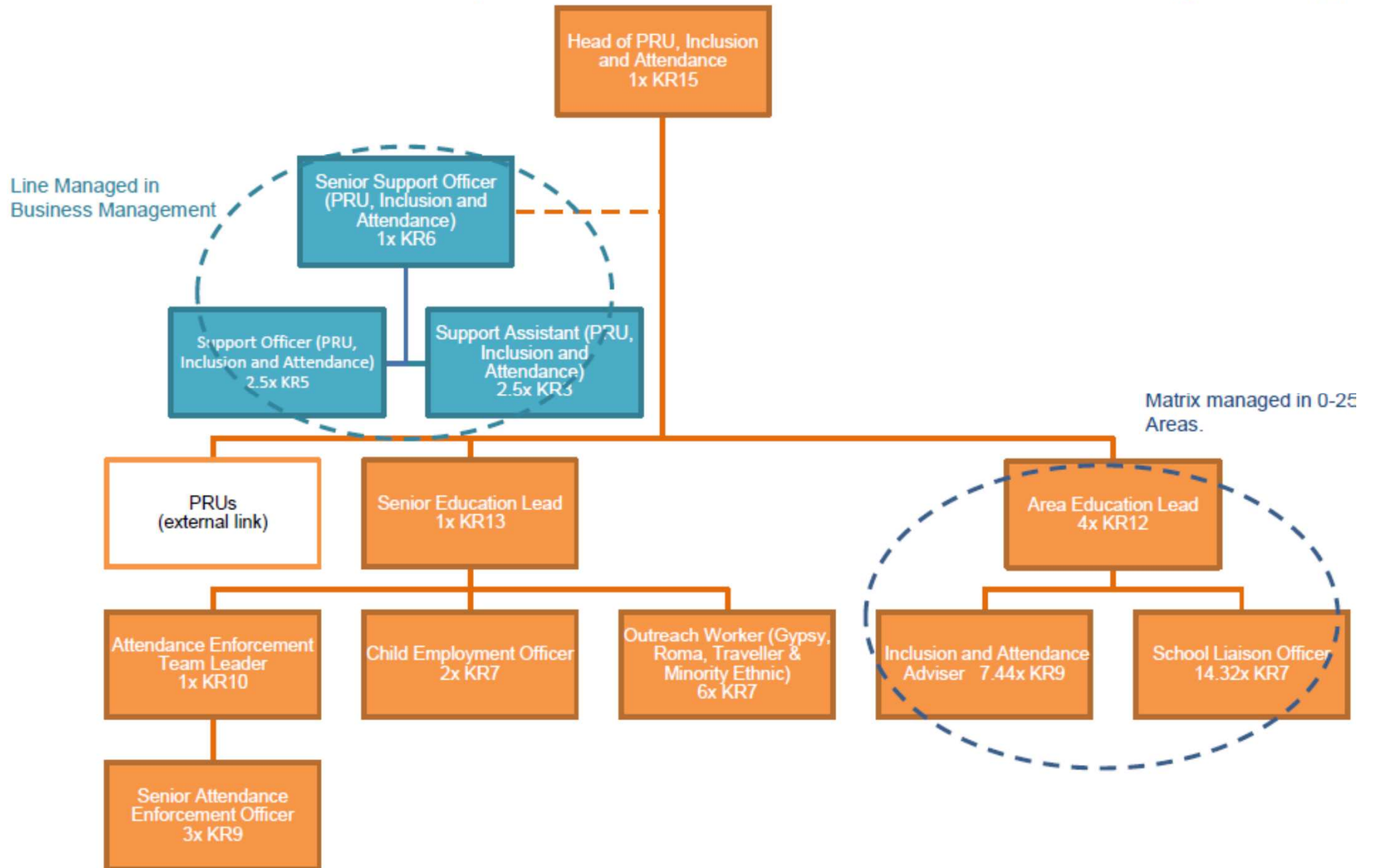
Early Help and Preventative Services

The District Leads for Preventative Services

Area Head	Stuart Collins	03000 410 519 Lynn Cartwright 03000, 411 740
Dartford	Tim O'Brien	03000 413 099
Sevenoaks	Christine Kiely	03000 414 270
Gravesham	Sarah Gow	03000 418 162
Area Education Lead Attendance and Inclusion	David Boyd	03000 418 532

PRU, Inclusion and Attendance Service

Appendix 1(g)



The Approach To Preventative Services

- Provide a single service response so that families, children and young people do not need to move around the system and in and out of different services
- Strengthen earlier intervention through universal settings and to deliver our early help services in families and in and around schools and other universal settings
- Coordinate our services with NHS services, so that we get a more integrated approach with health visitors, school nurses, CHYPS (CAMHS), substance misuse and sexual health workers who all have a role in providing early help
- Use the strengths of families to help themselves and ensure continuity of support for them until they feel things have improved