

Shaping the future of Children's Centres in Kent



Children's Centres Consultation Document (July 2013)

Foreword

Children's Centres play a significant role in providing effective early childhood services for families and young children, particularly those who are recognised as being in most need of help and support. They provide an ideal means of bringing together services such as health visiting, midwifery, employment services and adult learning into one place, sometimes alongside child care and more targeted services for children and families in need of them.

Kent County Council is committed to ensuring that there continues to be quality provision for young children and their families that will improve:

- The readiness of children for school
- Support for parents and their ability to meet their responsibilities
- Parents' opportunity to develop personal skills, education and ability to get work
- The development of healthy lifestyles for children
- Parents' ability to keep their children safe, including when online
- Children's chances of reaching their full potential and reduce inequality in their health and development.

The proposals outlined in this document, if implemented, will enable children and families to continue to access a range of advice and support services through Kent's extensive Children's Centre network. The expanding health visitor workforce, serving the county's children and families, will be supported by early years professionals and social workers when needed.

However, it is also important we achieve all of these objectives in the most efficient way possible and make maximum use of those buildings and facilities which are well used by families. In the current economic climate, it is vital that the Council sets out a model which is sustainable for the long-term future. These proposals set out how resources can be more focused on actual services for children and less on buildings and other overheads. They will deliver savings of at least £1.5m whilst ensuring wide coverage across the county and continued access to a nearby service for those who need it most.

We believe that focusing our resources, working more closely with health and delivering services where they are most needed, will maximise what our excellent Children's Centres can achieve.

We would very much like to know what you think of this proposal. The consultation will be running until 4 October. If you want to contribute to the consultation, have any queries, want further information or have alternative suggestions, please do get in touch.

Jenny Whittle
Cabinet Member for
Children's Services

Andrew Ireland
Corporate Director for
Families and Social Care

www.kent.gov.uk/childrenscentres
cc.consultation@kent.gov.uk

What is a Children's Centre?

A Children's Centre is a place or a group of places where parents with children under 5 years old can access early support services. These services may be provided at the Centre, or advice and assistance may be given to find services somewhere else.

Early support services include:

- Nursery provision
- Social services functions for young children, parents and expectant parents
- Health services for young children, parents and expectant parents
- Training and employment services to assist parents or expectant parents
- Information and advice services for parents and expectant parents.

There are currently 97 Children's Centres in Kent (excluding Medway).

Kent's vision for its Children's Centres

Children's Centres deliver high quality services meaning every child gets the healthiest start in life and is ready for school. Children's Centres meet the needs of the most vulnerable children and their families at the earliest opportunity, working together with other professionals to deliver easy access to the services when and where they are needed. They also work with pre-school children and their primary aged siblings to make sure families get the best all-round help.

Why are we consulting?

- Public funding for Children's Centres is reducing and we need to make sure that the available money can be focused more on actual services for children and their families and less on running buildings and other overhead costs.
- We need to change the way we work so that we can still meet the needs of our children and their families, particularly those who need our support most.

We have reviewed the Children's Centre Programme in Kent and have developed a proposal which aims to:

- Deliver savings of at least £1.5 million
- Protect services which improve health, education and social care
- Continue to offer parents and expectant parents a choice about which Centre they use
- Ensure we give support to those children and families who need it most
- Improve co-ordination and access to a range of services for families with children aged 0-11 where at least one child in the family is under 5 years old.

What has been considered in putting our proposal together?

- The need to save money whilst protecting current and future services
- The differences across Kent and the fact that services need to reflect the communities they serve, particularly those who need our support most
- The ways we can improve access to specialist services locally
- How Children's Centres are currently accessed and used. Some Children's Centres are more popular than others, the majority of families use more than one Centre, and most families do not use Centres after 3pm
- The different ways services are and could be run in the community
- What the law says we must do.

What information have we used?

- Information collected about attendance at and usage of Children's Centres for one year
- Analysis of children's and families' needs
- Children's Centres in Kent have undertaken two Countywide Parental Satisfaction Surveys
- Local knowledge and parent and carer feedback
- Compliments and complaints
- Local engagement workshops held in every District in Kent in February 2013
- Equality Impact Assessments.

Further information is available at www.kent.gov.uk/childrenscentres

What are we consulting on?

We are consulting on one proposal which includes:

1. Reducing the number of Children's Centres
2. Linking Children's Centres to reduce management and administrative costs
3. Reducing hours at some Children's Centres.

The following pages explain these proposals in more detail and show what they mean for different parts of Kent.

1. To reduce the number of Children's Centres

We want to create an affordable Children's Centre programme in Kent that continues to deliver good quality services. To do this we propose to reduce the number of Children's Centre buildings, but we will consider increasing our off site delivery in some areas.

We propose to close the following Children's Centres:

District	Children's Centre	See Page
Ashford	Cherry Blossom (Wye) Squirrel Lodge (Furley Park)	9
Canterbury	Apple Tree (Chartham) Briary Little Bees (Littlebourne) Swalecliffe Tina Rintoul (Hersden)	12
Dartford	Maypole	15
Dover	The Buttercup (St. Radigund's) and The Daisy (Tower Hamlets) to merge and relocate to an existing building in Dover town centre Primrose (North Deal)	9
Gravesham	Daisy Chains (Meopham) Little Painters (Painters Ash)	15
Maidstone	Loose Marden	18
Sevenoaks	Dunton Green Merry-Go Round (Westerham)	18
Shepway	New Romney The Village (Folkestone) or Folkestone (currently Folkestone Early Years)	9
Swale	St. Mary's (Faversham) Woodgrove (Sittingbourne)	12
Thanet	No Centre closures	12
Tonbridge & Malling	Hadlow/East Peckham Larkfield	18
Tunbridge Wells	Pembury	18

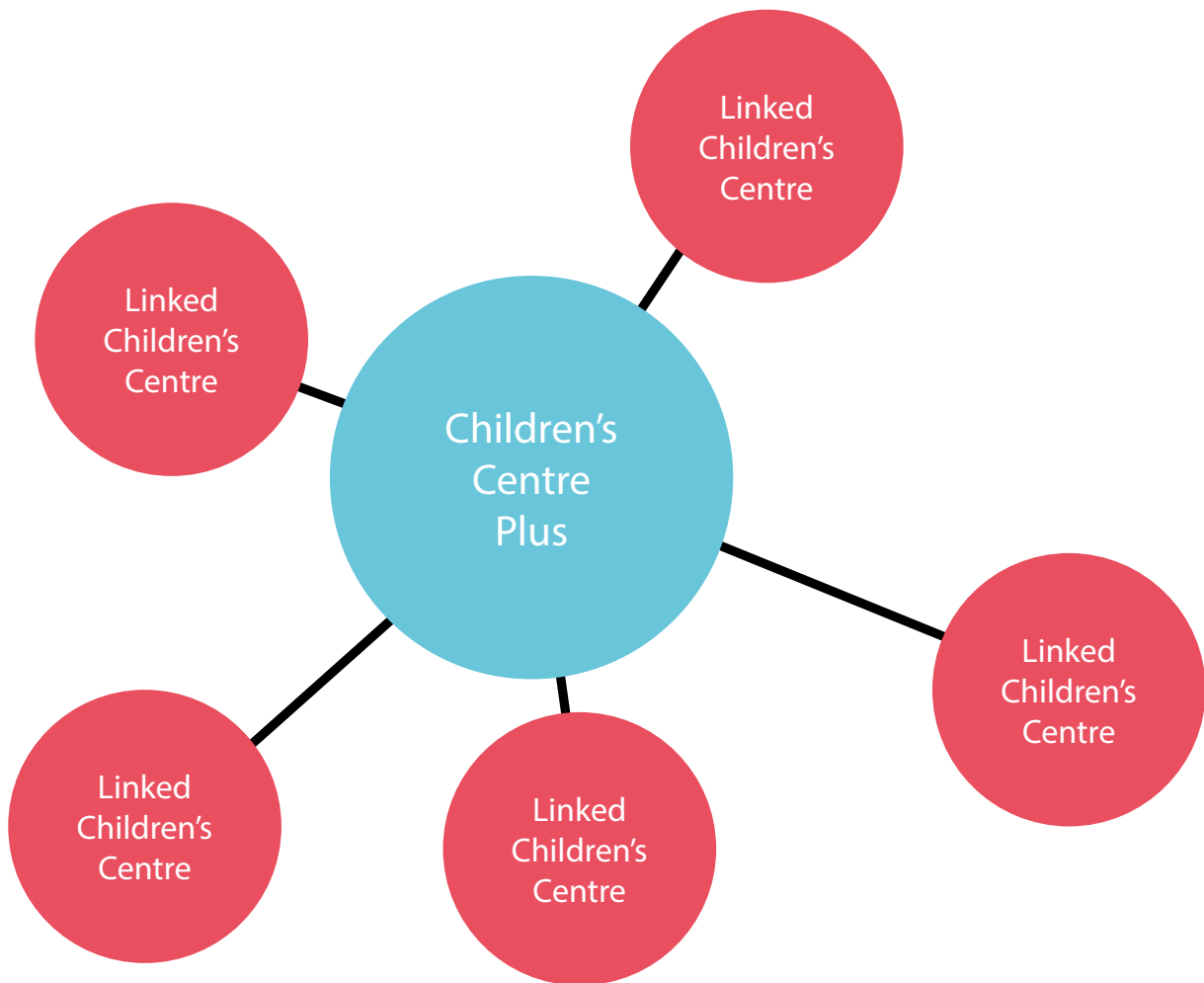
Some Children's Centres share their buildings with pre-schools or nurseries. These services are not provided by the Children's Centre directly and Children's Centres do not pay for them. Nurseries and pre-schools are excluded from this proposal.

2. Linking Children's Centres to reduce management and administrative costs

We want to ensure that the majority of the money is used to provide services. We will do this through reducing management and administrative costs by linking Centres.

We have identified 16 Lead Centres which are generally bigger buildings in communities where larger numbers of children and families need early support services. The Lead Centre, a "Children's Centre Plus", will co-ordinate services across the linked Centres including working with local Schools, GPs, Health Visitors, Childminders, Nurseries, Social Services, Health Specialists, Job Centre Plus and the Voluntary Sector to improve access to services. They may also deliver more support than they do now.

Proposed future operating model (the number of linked Centres may vary)



3. To reduce hours at some Children's Centres

We know that many Children's Centres have fewer users at certain times of the day. We are proposing to reduce hours at 13 Centres across the County to 18 hours a week (opening hours are to be agreed locally).

District	Reduced Hours	See page
Dartford	Temple Hill	13
Dover	Samphire (Aycliffe)	7
Sevenoaks	West Kingsdown	13
Shepway	Dymchurch Hawkinge and Rural Hythe Bay Lydd'le Stars (Lydd)	7
Swale	Beaches (Warden/Leysdown) Lilypad (Minster)	10
Thanet	Birchington Callis Grange Garlinge	10
Tunbridge Wells	Harmony (Rusthall)	16

What does this proposal mean?

- In some communities, Centres will close or Centre opening hours will be reduced
- Parents will still be able to access Children's Centre services in other Centres and we will continue to bring services to you
- Children's Centres will also support families where at least one child is under 5 years old to access services for their other children aged 5 -11
- All Centres will work together to deliver services. Some Children's Centres (a "Children's Centre Plus") may deliver more support than they do now
- The closure of a Children's Centre does not mean the closure of the nursery or pre-school
- Some Children's Centre services may not be delivered directly by Kent County Council.

How much will this proposal save?

This proposal will save at least £1.5 million. These savings will be from a reduction in administration, management and accommodation costs.

How can I get involved and have my say?

We are committed to keeping you involved and are keen to listen to your views.

Please let us know what you think by visiting the website at www.kent.gov.uk/childrenscentres and completing the online consultation questionnaire.

Alternatively, you can complete the consultation questionnaire on Page 21. Please return it to Freepost RTER-RZXC-HCJH Children's Centres, Facts International, Ashford, TN24 8FL or drop it into any Children's Centre.

If you are completing the consultation questionnaire in a professional capacity (i.e. in connection with your job), please complete the online questionnaire at www.kent.gov.uk/childrenscentres. Alternatively, any Children's Centre can provide you with a paper version of the correct questionnaire.

Contact us:

Email - cc.consultation@kent.gov.uk

Phone – 0300 333 5540

Post – Freepost RTER-RZXC-HCJH, Children's Centres, Facts International, Ashford, TN24 8FL

What happens next?

We will be consulting on these proposals until 4th October 2013 at 5pm.

Once the consultation finishes we promise to tell you the outcomes of the consultation at www.kent.gov.uk/childrenscentres. Feedback information will also be available at your local Children's Centre. A decision is expected in December 2013.

Further information is available at www.kent.gov.uk/childrenscentres

Ashford, Dover and Shepway

What does this mean for Ashford, Dover and Shepway?

District	Children's Centre Plus	Linked Children's Centre	Closure
Ashford	The Willow	Ray Allen Sure Steps Little Explorers Bluebells Waterside	Cherry Blossom Squirrel Lodge
Dover	Dover Town Centre (relocation of The Daisy and The Buttercup)	Buckland and Whitfield The Sunflower Aylesham (<i>currently Snowdrop*</i>) Blossom Samphire	Primrose The Daisy The Buttercup
Shepway	The Village or Folkestone (currently Folkestone Early Years*)	Caterpillars Hythe Bay (<i>currently Hythe Bay School*</i>) Dymchurch Hawkinge and Rural Lydd'le Stars	The Village or Folkestone (currently Folkestone Early Years*) New Romney

It is proposed that Centres shown in **bold** become part time.

* Services currently delivered within these Centres may be delivered by another organisation. Legally, Kent County Council is required to allow other organisations to bid to run these services. This means that the organisation that provides services at these Centres may change. In some cases the services may relocate to a different building, but the building will be within the same local area.

Why are we proposing to close these Centres?

- **Cherry Blossom** – Cherry Blossom Children's Centre currently signposts to services. It does not deliver services at the Children's Centre which is at Wye School. The Centre serves an area where smaller numbers of children and families need early support services. The majority of Centre users also attend another Children's Centre. Cherry Blossom Children's Centre is near Wye Library. The library will be used to support families to access services.
- **Squirrel Lodge** – Squirrel Lodge Children's Centre is at Furley Park Primary School. Evidence suggests that the Centre currently signposts a large number of its users to other Centres. The Centre serves an area where smaller numbers of children and families need early support services. The majority of Centre users also attend another Children's Centre.
- **Primrose** – Primrose Children's Centre is at Sandown School. Primrose Children's Centre serves an area where smaller numbers of children and families need early support services. The majority of Centre users also attend another Children's Centre. Primrose Children's Centre is near Deal Library, which registers births, and will be used to support families to access more services.
- **The Daisy and The Buttercup** – It is proposed that The Daisy Children's Centre and The Buttercup Children's Centre are merged and relocated to an existing building in Dover Town Centre. We believe that this will improve access to the Centres and increase opportunities for partnership working. The majority of users at both Centres also attend another Children's Centre.

- **The Village or Folkestone Early Years Centre** - The Village Children's Centre is approximately 950 metres from Folkestone Early Years Children's Centre. Children's Centre closures are unavoidable and we believe it makes sense to close one of these two Centres. Both Centres have similar numbers of users and a number already attend both Centres. If one of these buildings is chosen for closure, services will continue to be delivered in the remaining building.

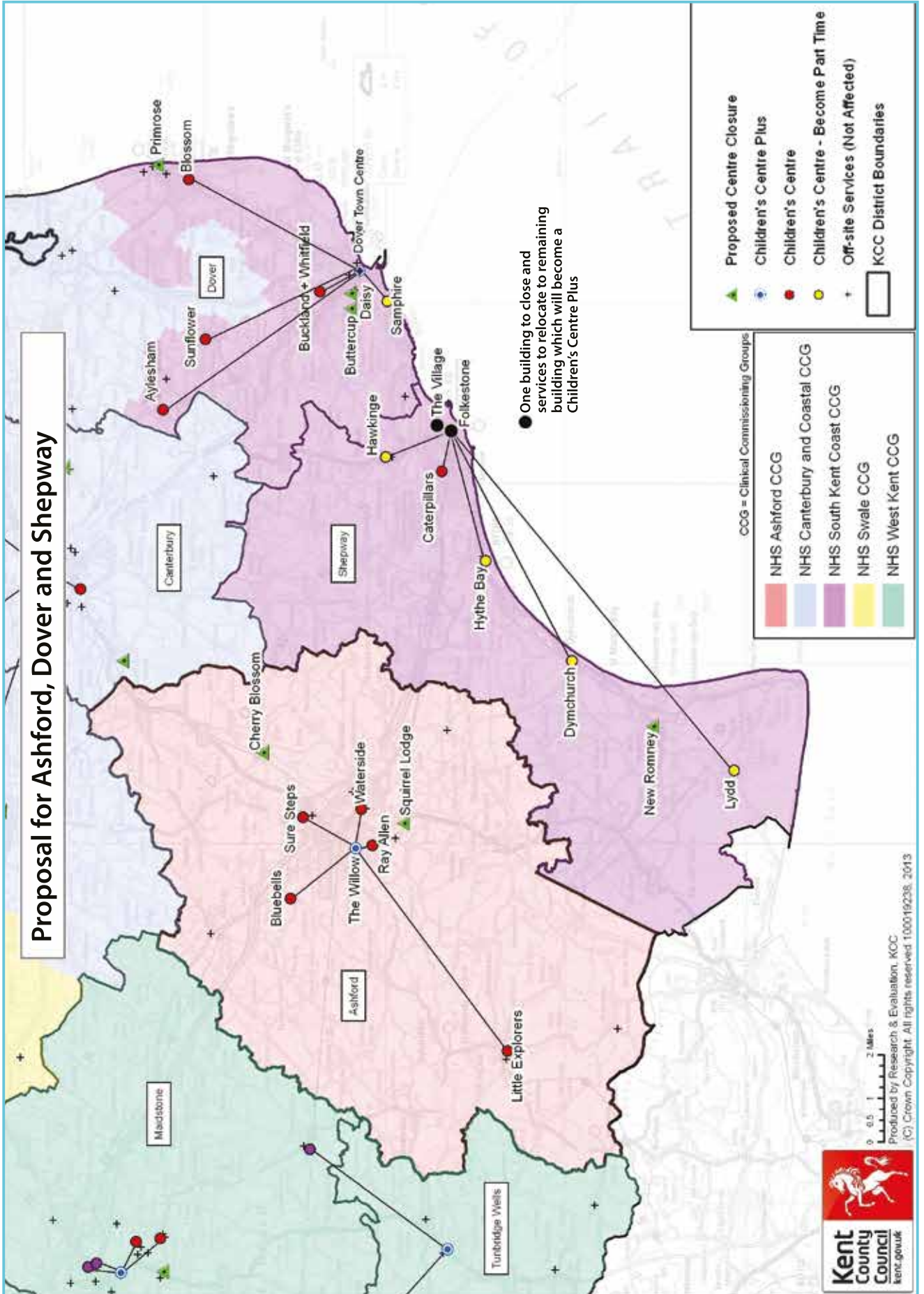
This proposal does not affect the pre-school at The Village Children's Centre which is not delivered by the Children's Centre. However depending on the building chosen for closure there may be an impact on nursery provision at Folkestone Early Years Children's Centre.

- **New Romney** – New Romney Children's Centre serves an area where smaller numbers of children and families need early support services. The majority of users attend another Children's Centre. New Romney Children's Centre is near New Romney Library. The library will be used to support families to access services.

Why are we proposing to make these Centres part time?

- **Shepway Children's Centres** - Due to the rural locations of some Centres, the majority of users only access their local Centre. With this in mind, and the fact that we cannot afford the current level of service we propose that the following Centres open part time.
 - Hythe Bay (Hythe Library is nearby and will be used to support families to access services when the Children's Centre is closed)
 - Dymchurch
 - Hawkinge and Rural
 - Lydd'le Stars (Lydd Library is nearby and will be used to support families to access services when the Children's Centre is closed.)
- **Caterpillars (Morehall)** - Serves an area where larger numbers of children and families need early support services and will remain full time.
- **Samphire** – Samphire Children's Centre is at Aycliffe Primary School. Samphire Children's Centre does not serve one of the areas identified as having larger numbers of children and families needing early support services. The majority of Centre users also attend another Children's Centre.

This proposal does not affect the nursery provision at the Children's Centre which is not delivered by Kent County Council.



Canterbury, Swale and Thanet

What does this mean for Canterbury, Swale and Thanet?

District	Children's Centre Plus	Linked Children's Centre	Closure
Canterbury	Canterbury City Centre <i>(currently Riverside*)</i>	The Poppy Joy Lane Little Hands	Apple Tree Briary Little Bees Swalecliffe Tina Rintoul
Swale	Milton Court	Bysing Wood <i>(management linked to Canterbury City Centre Children's Centre)</i> Grove Park Murston	St. Mary's Woodgrove
	Sheerness <i>(currently Seashells*)</i>	Ladybird Beaches Lilypad	
Thanet	Priory	Newington Newlands Birchington	No Closures
	Six Bells	Dane Valley <i>(currently Millmead*)</i> Garlinge Callis Grange Cliftonville	

It is proposed that Centres shown in **bold** become part time.

* Services currently delivered within these Centres maybe delivered by another organisation. Legally, Kent County Council is required to allow other organisations to bid to run these services. This means that the organisation which provides services at these Centres may change. In some cases the services may relocate to a different building, but the building will be within the same local area

Why are we proposing to close these Centres?

- **Apple Tree** – Apple Tree Children's Centre serves an area where smaller numbers of children and families need early support services. The majority of Centre users also attend another Children's Centre.
- **Briary** – Briary Children's Centre serves an area where smaller numbers of children and families need early support services. The majority of Centre users also attend another Children's Centre.
- **Little Bees** – Evidence suggests that Little Bees Children's Centre currently signposts a large number of its users to other Centres. The Centre serves an area where smaller numbers of children and families need early support services. The majority of Centre users also attend another Children's Centre.
- **Swalecliffe** - Swalecliffe Children's Centre is at Swalecliffe Community Primary School and serves an area where smaller numbers of children and families need early support services. The majority of Centre users also attend another Children's Centre.

This proposal does not affect the pre-school provision at Swalecliffe Children's Centre which is not delivered by Kent County Council.

- **Tina Rintoul** – Tina Rintoul Children's Centre serves an area where smaller numbers of children and families need early support services. Tina Rintoul is the least used Centre in the Canterbury district.
- **St. Mary's** – St. Mary's Children's Centre is at St. Mary's of Charity CE Primary School and does not serve one of the areas identified as having larger numbers of children and families needing early support services. Many Centre users also attend Bysing Wood Children's Centre. St. Mary's Children's Centre is near Faversham Library, which registers births, and will be used to support families to access more services.
- **Woodgrove** - Woodgrove Children's Centre does not serve one of the areas identified as having larger numbers of children and families needing early support services. The majority of Centre users also attend one of the other three Children's Centres in Sittingbourne. Woodgrove Children's Centre is near Sittingbourne Library, which registers births, and will be used to support families to access more services.

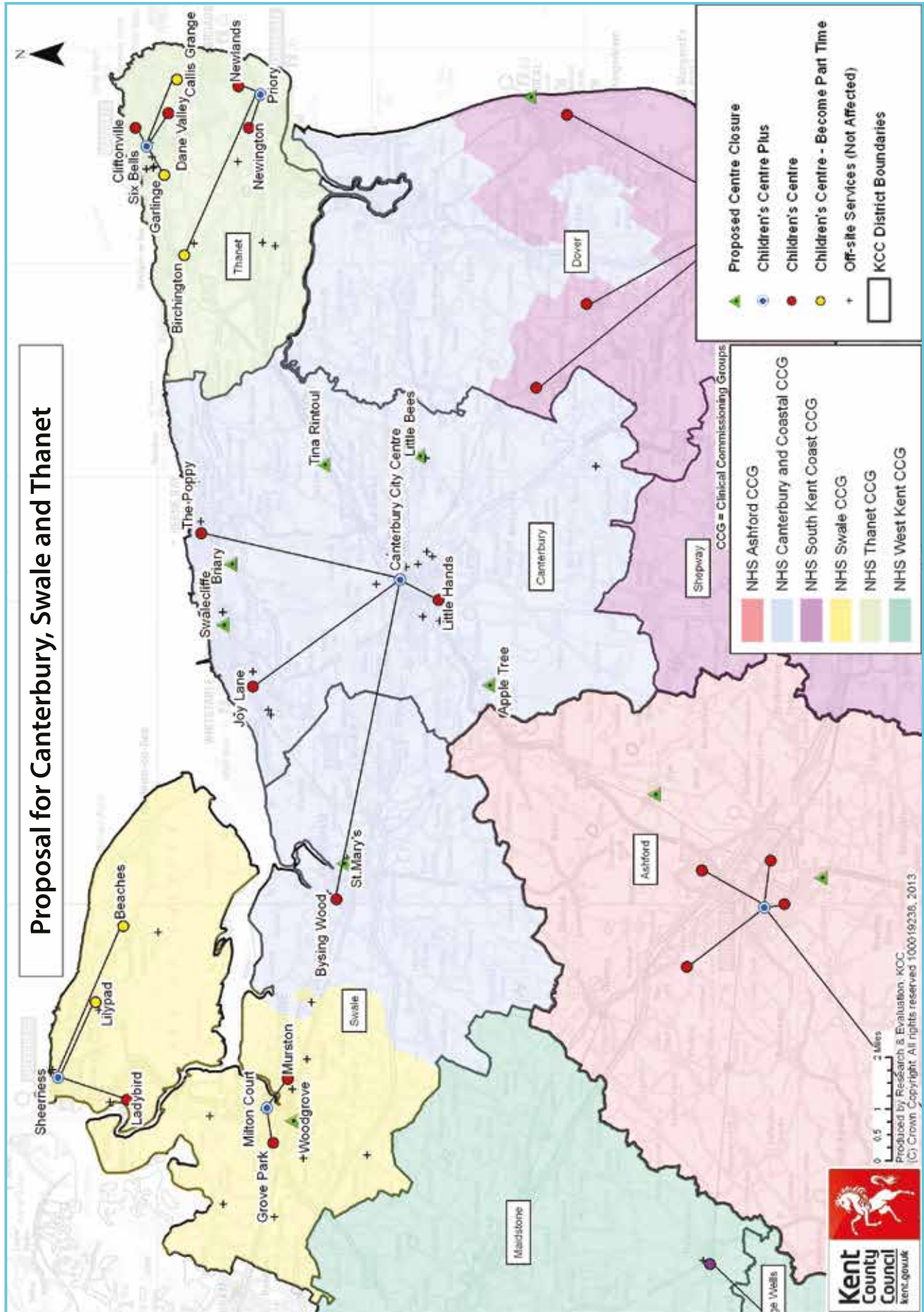
This proposal does not affect the nursery provision at the Children's Centre which is not delivered by Kent County Council.

Why are we proposing to make these Centres part time?

- **Swale Children's Centres** – Lilypad and Beaches operate as one Children's Centre. Due to their rural location, the Centres serve areas where smaller numbers of children and families need early support services. The majority of Lilypad and Beaches users do not access other Centres in Kent. Part time hours at both will ensure that one of the two sites is open. Lilypad Children's Centre is near Minster-in-Sheppey Library. The library will be used to support families to access services.
- **Thanet Children's Centres** – Centres serve areas where more children and families need early support services. With this in mind, and the fact that we cannot afford the current level of service, we propose that the following Centres open part time.
 - Birchington (Birchington Library is nearby and will be used to support families to access services when the Children's Centre is closed)
 - Garlinge
 - Callis Grange

These Centres serve areas where smaller numbers of children and families need early support services, compared to other areas in Thanet.

Proposal for Canterbury, Swale and Thanet



Dartford, Gravesham and Swanley

What does this mean for Dartford, Gravesham and Swanley?

District	Children's Centre Plus	Linked Children's Centre	Closure
Dartford	Brent	Knockhall Swanscombe Oakfield Temple Hill Greenlands at Darenth (<i>management linked to Swanley Children's Centre</i>)	Maypole
Gravesham	Little Pebbles	Kings Farm Little Gems Riverside Bright Futures	Daisy Chains Little Painters
Swanley	Swanley	New Ash Green West Kingdown	No Closures

It is proposed that Centres shown in **bold** become part time.

Information for Sevenoaks is on Page 18.

Why are we proposing to close these Centres?

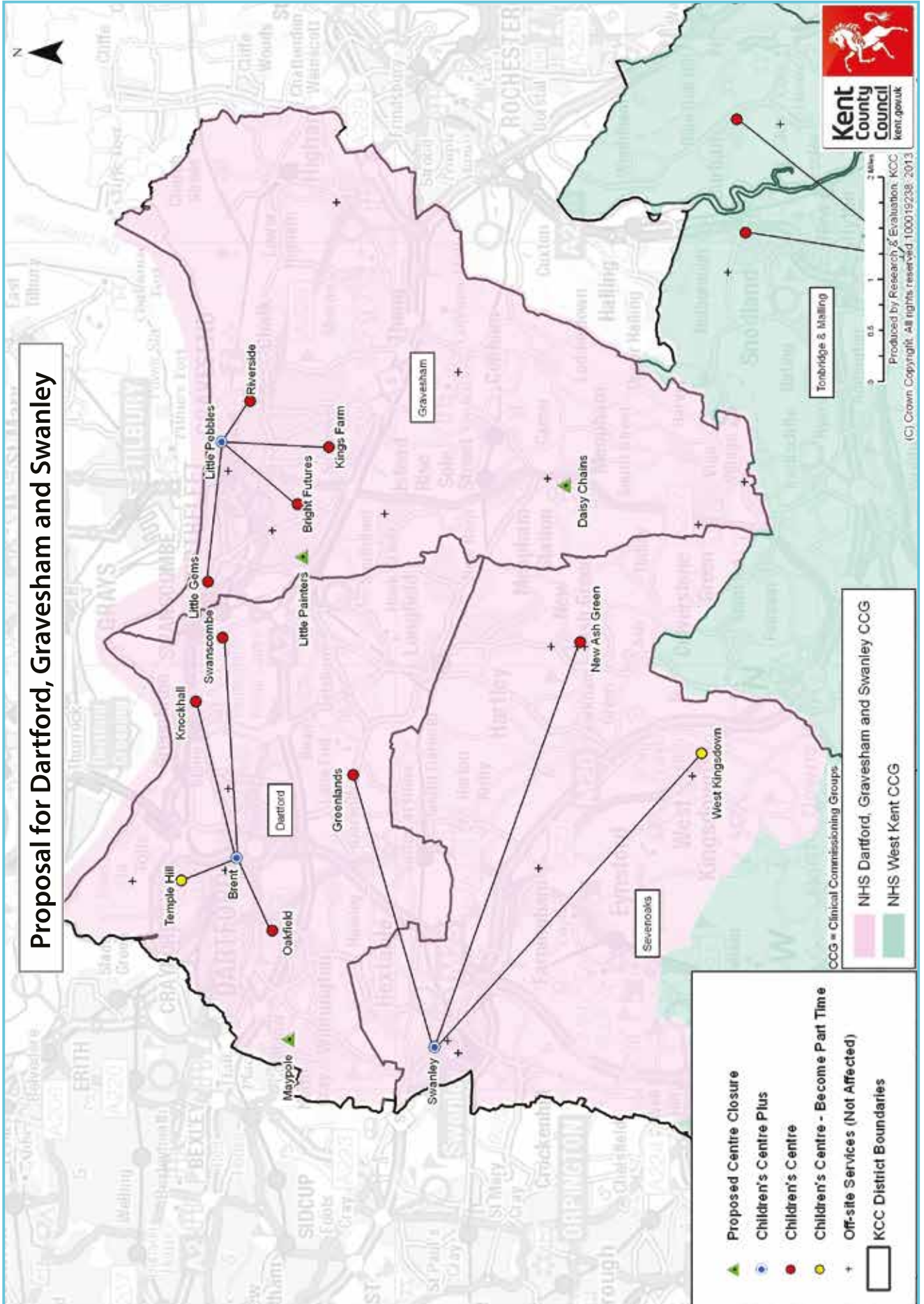
- **Maypole** – Maypole Children's Centre is at Maypole Primary School and does not serve one of the areas identified as having larger numbers of children and families needing early support services. Many Centre users also attend another Children's Centre. Very few Centre users attend Maypole regularly. Maypole Children's Centre is near Summerhouse Drive library. The library will be used to support families to access services.
- **Daisy Chains** – Daisy Chains Children's Centre serves an area where smaller numbers of children and families need early support services. Most services run by Daisy Chains are delivered off site (and will not be affected under this proposal).
- **Little Painters** – Little Painters Children's Centre serves an area where smaller numbers of children and families need early support services. Evidence suggests that the Centre currently signposts a large number of its users to other Centres. The majority of Centre users also attend another Children's Centre. Little Painters currently opens part time. Most services run by Little Painters are delivered off site (and will not be affected under this proposal).

Why are we proposing to make these Centres part time?

- **Temple Hill** – We believe that the Children’s Centre at Temple Hill is not in the best place to encourage families to attend. However, as the Centre serves an area where larger numbers of children and families need early support services, we propose to keep the Centre open with part time hours. This will allow us to increase the number of hours we can deliver services off site at other local community venues. Temple Hill Children’s Centre is near Temple Hill library. The library will be used to support families to access services when the Children’s Centre is closed.

This proposal does not affect the nursery provision at the Children’s Centre which is not delivered by Kent County Council.

- **West Kingsdown** – West Kingsdown Children’s Centre serves an area where smaller numbers of children and families need early support services. West Kingsdown Children’s Centre has the fewest number of Centre users of the Children’s Centres in the Swanley area. The majority of Centre users do not attend another Children’s Centre and therefore we propose to reduce hours rather than close the Centre. West Kingsdown Children’s Centre is near West Kingsdown library. The library will be used to support families to access services when the Children’s Centre is closed.



Maidstone, Sevenoaks, Tonbridge & Malling and Tunbridge Wells

What does this mean for Maidstone, Sevenoaks, Tonbridge & Malling and Tunbridge Wells?

District	Children's Centre Plus	Linked Children's Centre	Closure
Maidstone	Sunshine	Greenfields The Meadow Eastborough (currently part-time) Howard de Walden (currently part-time) Headcorn (currently part-time) <i>(management linked to Cranbrook Children's Centre)</i> Westborough <i>(management linked to Woodlands Children's Centre)</i>	Loose Marden
Sevenoaks	Sevenoaks Town Centre (currently Spring House*)	Edenbridge	Dunton Green Merry-Go Round (Westerham)
Tonbridge & Malling	Woodlands	Little Foxes (Long Mead) <i>(management linked to Sevenoaks Children's Centre)</i> Borough Green (currently part-time) <i>(management linked to Sevenoaks Children's Centre)</i> Burham Snodland South Tonbridge <i>(management linked to Little Forest Children's Centre)</i>	Hadlow/East Peckham Larkfield
Tunbridge Wells	Little Forest	Southborough / High Brooms The Ark Harmony	Pembury
	Cranbrook	Paddock Wood (currently part-time)	

It is proposed that Centres that are currently part-time remain part-time and that Centres shown in **bold** become part time.

* Services currently delivered within these Centres maybe delivered by another organisation. Legally, Kent County Council is required to allow other organisations to bid to run these services. This means that the organisation which provides services at these Centres may change. In some cases the services may relocate to a different building, but the building will be within the same local area.

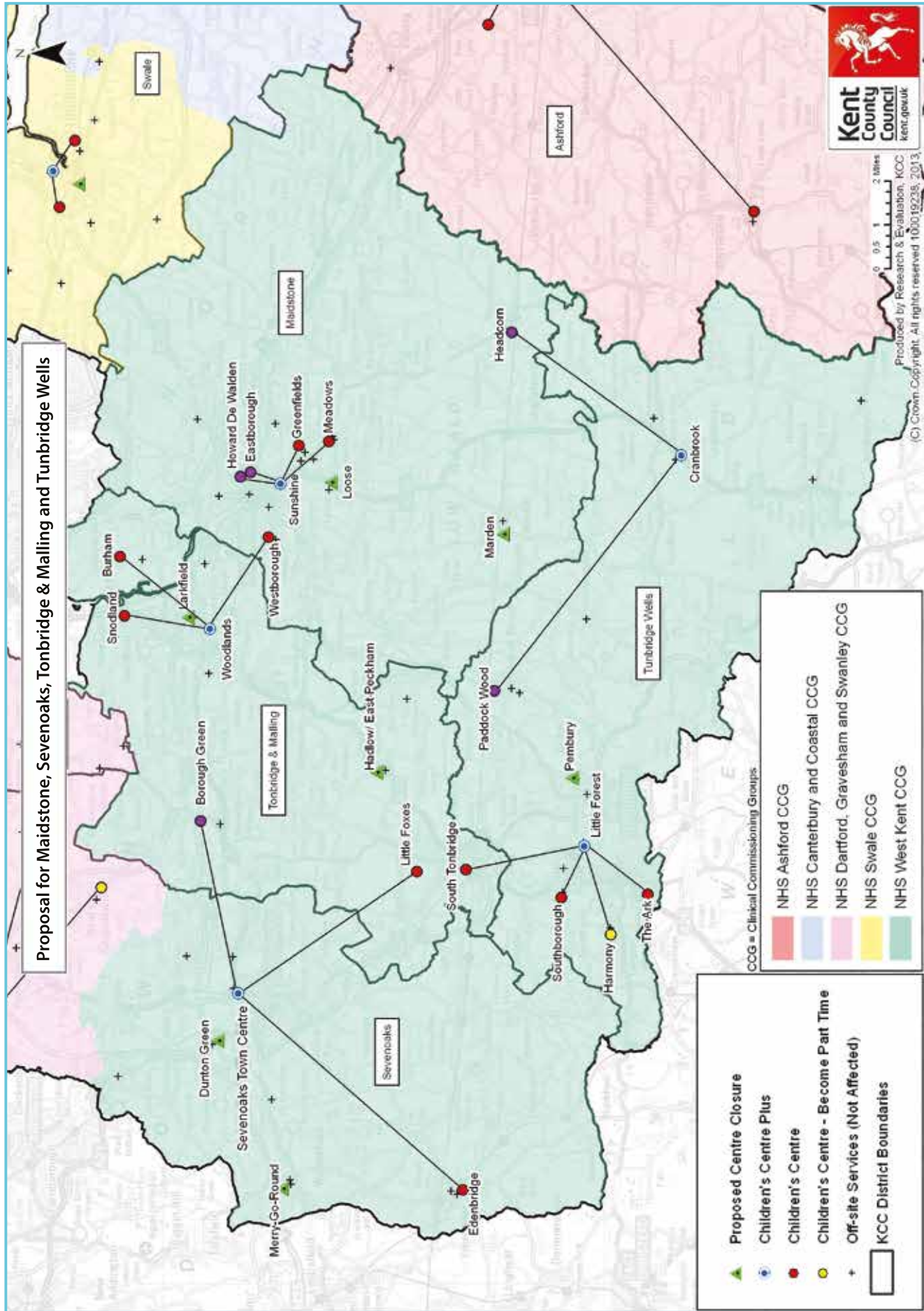
Information for Swanley is on Page 15.

Why are we proposing to close these Centres?

- **Loose** – Loose Children's Centre serves an area where smaller numbers of children and families need early support services. Evidence suggests that the Centre currently signposts a large number of its users to other Centres. The majority of Centre users also attend another Children's Centre. Loose Children's Centre currently opens part time.
- **Marden** – Marden Children's Centre serves an area where smaller numbers of children and families need early support services. Evidence suggests that the Centre currently signposts a large number of its users to other Centres. The majority of Centre users also attend another Children's Centre. Marden Children's Centre is near Marden Library. The library will be used to support families to access services. Marden Children's Centre currently operates part time.
- **Dunton Green** – Dunton Green Children's Centre serves an area where smaller numbers of children and families need early support services. Evidence suggests that the Centre currently signposts a large number of its users to other Centres. The majority of Centre users also attend another Children's Centre.
- **Merry-Go Round** – Merry-Go Round Children's Centre serves an area where smaller numbers of children and families need early support services. The majority of Centre users also attend another Children's Centre. Merry-Go Round Children's Centre is near Westerham Library. The library will be used to support families to access services.
- **Hadlow / East Peckham** – Hadlow Children's Centre serves an area where smaller numbers of children and families need early support services. The majority of Centre users attend another Children's Centre. Hadlow Children's Centre is near Hadlow Library. The library will be used to support families to access services. Hadlow Children's Centre services are currently open part time.
- **Larkfield** – Larkfield Children's Centre serves an area where smaller numbers of children and families need early support services. Evidence suggests that the Centre currently signposts a large number of its users to other Centres. The majority of Centre users also attend another Children's Centre. Larkfield Children's Centre is near Larkfield Library, which registers births. The library will be used to support families to access more services, a number of which are currently run at the library. Larkfield Children's Centre currently opens part time.
- **Pembury** - Pembury Children's Centre serves an area where smaller numbers of children and families need early support services. The majority of Centre users also attend another Children's Centre. Most services run by Pembury Children's Centre are delivered off site (and will not be affected under this proposal).

Why are we proposing to make these Centres part time?

- **Harmony** – Harmony Children's Centre serves an area where smaller numbers of children and families need early support services. The majority of users do not attend another Children's Centre and therefore we propose to reduce hours rather than close the Centre. Harmony Children's Centre is near Rusthall Library. The library will be used to support families to access services when the Children's Centre is closed.



Shaping the Future of Children's Centres in Kent: Public Consultation Questionnaire

We are committed to keeping you involved and are keen to listen to your views.

Please let us know what you think by visiting the website at www.kent.gov.uk/childrenscentres and completing the online consultation questionnaire.

Alternatively, you can complete this consultation questionnaire. Please return it to **Freepost RTER-RZXC-HCJH Children's Centres, Facts International, Ashford, TN24 8FL** or drop it into any Children's Centre.

Q1 Please tick all that apply

I am a parent/carer of children aged under 5	<input type="checkbox"/>
I am a parent/carer of children aged 5-11	<input type="checkbox"/>
I am a parent/carer of children aged 12-18	<input type="checkbox"/>
I will be a parent soon	<input type="checkbox"/>
None of these	<input type="checkbox"/>

If you are completing the consultation questionnaire in a professional capacity (i.e. in connection with your job), please complete the online questionnaire at www.kent.gov.uk/childrenscentres. Alternatively, a Children's Centre can provide you with a paper version of the correct questionnaire.

Q2 How often do you usually use Children's Centre services in Kent?

Two or more times a week	<input type="checkbox"/>
Once a week	<input type="checkbox"/>
Once a month	<input type="checkbox"/>
Less often than once a month	<input type="checkbox"/>
Never	<input type="checkbox"/>

→ PLEASE GO STRAIGHT TO Q4

Q3 Which Children's Centre(s) do you use most often? (PLEASE WRITE IN)

1
2
3

PROPOSAL 1: REDUCING THE NUMBER OF CHILDREN'S CENTRES

Q4 To what extent do you agree or disagree with the proposal to reduce the number of Children's Centres (Proposal 1)?

Strongly agree	<input type="checkbox"/>	→ PLEASE GO STRAIGHT TO Q6
Agree	<input type="checkbox"/>	→ PLEASE GO STRAIGHT TO Q6
Neither agree nor disagree	<input type="checkbox"/>	→ PLEASE GO STRAIGHT TO Q6
Disagree	<input type="checkbox"/>	→ PLEASE ANSWER Q5
Strongly disagree	<input type="checkbox"/>	→ PLEASE ANSWER Q5
Don't know	<input type="checkbox"/>	→ PLEASE GO STRAIGHT TO Q6
I do not wish to comment on this proposal	<input type="checkbox"/>	→ PLEASE GO STRAIGHT TO Q8

Q5 If you disagree with the proposal, is it the proposed closure of any particular Centre(s) that you object to? (PLEASE TICK ALL THAT APPLY)

Ashford, Dover and Shepway		Canterbury, Swale and Thanet	
Cherry Blossom	<input type="checkbox"/>	Apple Tree	<input type="checkbox"/>
Squirrel Lodge	<input type="checkbox"/>	Briary	<input type="checkbox"/>
The Buttercup	<input type="checkbox"/>	Little Bees	<input type="checkbox"/>
The Daisy	<input type="checkbox"/>	Swalecliffe	<input type="checkbox"/>
Primrose	<input type="checkbox"/>	Tina Rintoul	<input type="checkbox"/>
New Romney	<input type="checkbox"/>	St. Mary's	<input type="checkbox"/>
The Village	<input type="checkbox"/>	Woodgrove	<input type="checkbox"/>
Folkestone Early Years Centre	<input type="checkbox"/>		<input type="checkbox"/>

Dartford, Gravesham and Swanley		Maidstone, Sevenoaks, Tonbridge & Malling and Tunbridge Wells	
Maypole	<input type="checkbox"/>	Loose	<input type="checkbox"/>
Daisy Chains	<input type="checkbox"/>	Marden	<input type="checkbox"/>
Little Painters	<input type="checkbox"/>	Dunton Green	<input type="checkbox"/>
		Merry-Go Round	<input type="checkbox"/>
		Hadlow/East Peckham	<input type="checkbox"/>
		Larkfield	<input type="checkbox"/>
		Pembury	<input type="checkbox"/>

My objections don't relate to any particular Centre(s)	<input type="checkbox"/>
--	--------------------------

Q6 What impact (if any) will the proposed reduction in the number of Children's Centres have on you? (PLEASE TICK ALL THAT APPLY)

No impact	<input type="checkbox"/>
I will use Children's Centre services less often	<input type="checkbox"/>
I will not use Children's Centres at all	<input type="checkbox"/>
I will attend alternative (non-Children's Centre) activities (e.g. swimming, visiting friends, attending other local groups etc.)	<input type="checkbox"/>
I will attend another Children's Centre instead	<input type="checkbox"/>
Other (PLEASE WRITE IN)	<input type="checkbox"/>
Don't know	<input type="checkbox"/>

Q7 Could you tell us why you say that?

PROPOSAL 2: LINKING CHILDREN’S CENTRES TO REDUCE MANAGEMENT AND ADMINISTRATIVE COSTS

Q8 To what extent do you agree or disagree with the proposal to reduce management and administrative costs through linking Children’s Centres (Proposal 2)?

Strongly agree	<input type="checkbox"/>	→ PLEASE GO STRAIGHT TO Q10
Agree	<input type="checkbox"/>	→ PLEASE GO STRAIGHT TO Q10
Neither agree nor disagree	<input type="checkbox"/>	→ PLEASE GO STRAIGHT TO Q10
Disagree	<input type="checkbox"/>	→ PLEASE ANSWER Q9
Strongly disagree	<input type="checkbox"/>	→ PLEASE ANSWER Q9
Don’t know	<input type="checkbox"/>	→ PLEASE GO STRAIGHT TO Q10
I do not wish to comment on this proposal	<input type="checkbox"/>	→ PLEASE GO STRAIGHT TO Q10

Q9 If you disagree with the proposal to link Centres to reduce management and administrative costs, please tell us why.

PROPOSAL 3: TO REDUCE OPENING HOURS AT SOME CHILDREN'S CENTRES

Q10 To what extent do you agree or disagree with the proposal to reduce the opening hours at some Children's Centres (Proposal 3)?

Strongly agree	<input type="checkbox"/>	→ PLEASE GO STRAIGHT TO Q12
Agree	<input type="checkbox"/>	→ PLEASE GO STRAIGHT TO Q12
Neither agree nor disagree	<input type="checkbox"/>	→ PLEASE GO STRAIGHT TO Q12
Disagree	<input type="checkbox"/>	→ PLEASE ANSWER Q11
Strongly disagree	<input type="checkbox"/>	→ PLEASE ANSWER Q11
Don't know	<input type="checkbox"/>	→ PLEASE GO STRAIGHT TO Q12
I do not wish to comment on this proposal	<input type="checkbox"/>	→ PLEASE GO STRAIGHT TO Q14

Q11 If you disagree with the proposal, is it the proposed reduction of opening hours at any particular Centre(s) that you object to? (PLEASE TICK ALL THAT APPLY)

Ashford, Dover and Shepway		Canterbury, Swale and Thanet	
Samphire	<input type="checkbox"/>	Beaches	<input type="checkbox"/>
Dymchurch	<input type="checkbox"/>	Lilypad	<input type="checkbox"/>
Hawkinge and Rural	<input type="checkbox"/>	Birchington	<input type="checkbox"/>
Hythe Bay	<input type="checkbox"/>	Callis Grange	<input type="checkbox"/>
Lydd'le Stars	<input type="checkbox"/>	Garlinge	<input type="checkbox"/>

Dartford, Gravesham and Swanley		Maidstone, Sevenoaks, Tonbridge & Malling and Tunbridge Wells	
Temple Hill	<input type="checkbox"/>	Harmony	<input type="checkbox"/>
West Kingsdown	<input type="checkbox"/>		

My objections don't relate to any particular Centre(s)	<input type="checkbox"/>
--	--------------------------

Q12 What impact (if any) will the proposed reduction in opening hours at some Children’s Centres have on you? (PLEASE TICK ALL THAT APPLY)

No impact	<input type="checkbox"/>
I will use Children’s Centre services less often	<input type="checkbox"/>
I will not use Children’s Centres at all	<input type="checkbox"/>
I will attend alternative (non-Children’s Centre) activities <i>(e.g. swimming, visiting friends, attending other local groups etc.)</i>	<input type="checkbox"/>
I will attend another Children’s Centre instead	<input type="checkbox"/>
Other (PLEASE WRITE IN)	<input type="checkbox"/>
Don’t know	<input type="checkbox"/>

Q13 Could you tell us why you say that?

FURTHER COMMENTS

Q14 Please use this space if you would like to add any further comments about any of the proposals for Children's Centres:

We want to make sure that everyone is treated fairly and equally, and that no one gets left out. To help us we are asking you for some information about yourself. This information will only be used to help us make decisions about our services and for the purposes of service improvement.

If you would rather not answer any of these questions, you do not have to.

Q15 How old are you?

Under 20		20-25		26-30		31-35	
36-40		41-45		46-50		Over 50	
I prefer not to say							

Q16 What is your home postcode?

Q17 Are you?

Male		Female		I prefer not to say	
------	--	--------	--	---------------------	--

Q18 Is your Gender the same as it was at birth?

Yes		No		I prefer not to say	
-----	--	----	--	---------------------	--

Q19 To which of these ethnic groups do you feel you belong?

White		Mixed		Asian or Asian British		Black or Black British	
British		White & Black Caribbean		Indian		Caribbean	
Irish		White & Black African		Pakistani		African	
Gypsy/Roma		White & Asian		Bangladeshi		Other*	
Irish Traveller		Other*		Other*			
Other*		Arab		Chinese		I prefer not to say	

***Other Ethnic Group** - if your ethnic group is not specified in the list, please describe it here:

Q20 Is English your main language?

Yes		No		I prefer not to say	
-----	--	----	--	---------------------	--

Q21 Are your day-to-day activities limited because of a health problem or disability which has lasted, or is expected to last, at least 12 months?

Yes, limited a lot		Yes, limited a little		No		I prefer not to say	
--------------------	--	-----------------------	--	----	--	---------------------	--

Q22 What is your religion?

No religion		Christian		Buddhist		Hindu	
Jewish		Muslim		Sikh		Any other religion	
I prefer not to say							

Q23 Which of the following best describes your marital status?

Married/Civil Partnership/Cohabiting	
Separated/Divorced/Widowed	
Single	
I prefer not to say	

Q24 Are you...?

Bi/Bisexual		Gay woman/Lesbian		Other	
Heterosexual/Straight		Gay man		I prefer not to say	

Thank you for providing this information, your feedback is important to us.

We have completed Equality Impact Initial Assessments to see if the proposals could affect anyone unfairly. We welcome your views on the assumptions we have made and the conclusions we have drawn. To view the documents, please go to www.kent.gov.uk/childrenscentres or contact us:

Email – cc.consultation@kent.gov.uk

Phone – 0300 333 5540

Post – Freepost RTER-RZXC-HCJH Children's Centres, Facts International, Ashford, TN24 8FL

Notes

This document is available in alternative formats and languages.
Please phone 0300 333 5540 or speak to a member of staff at your
Children's Centre who can phone on your behalf.
Text Relay: 18001 0300 333 5540