

03 November 2021 at 2.00 pm

Council Chamber, Argyle Road, Sevenoaks

Published: 26.10.21



Health Liaison Board

Supplementary Agenda

	Pages	Contact
5. West Kent Integrated Care Partnership Update	(Pages 1 - 16)	Kelly Webb Tel: 01732227474

If you wish to obtain further factual information on any of the agenda items listed above, please contact the named officer prior to the day of the meeting.

Should you need this agenda or any of the reports in a different format, or have any other queries concerning this agenda or the meeting please contact Democratic Services on 01732 227000 or democratic.services@sevenoaks.gov.uk.

This page is intentionally left blank



**Transforming
health and social care**
in Kent and Medway

Page 1

West Kent Health and Care Partnership

Agenda Item 5

Transforming health and social care in Kent and Medway is a partnership of all the NHS organisations in Kent and Medway, Kent County Council and Medway Council. We will work together to make health and wellbeing better than any partner can do alone.

What is a health and care partnership?

- The West Kent Health and Care Partnership is a Place Based Partnership (PBP). It brings together all local health and care organisations in a geographical area to work together for the benefit of patients and residents in a local area.
- There are four PBPs in Kent and Medway: West Kent, East Kent, Medway & Swale and Dartford, Gravesham & Swanley.
- Partnerships will design and deliver services to meet the needs of the people they serve, based on their local population needs.
- They will focus their work on areas of greatest need, helping to reduce health inequalities and improve health outcomes and life expectancy.
- The PBP will support improved connectivity between health and care providers including all health providers and all aspects of the council's work (social services, preventing ill health but also education, planning, housing, environmental health and leisure services), voluntary & community groups and patient/resident groups.

Place Based Partnerships are running in shadow form until legislation is passed to confirm their legal status and responsibilities. This is expected to happen by April 2022.

Which organisations are part of West Kent health and care partnership (HCP)?

West Kent HCP includes all the key organisations providing health and care in West Kent:

- Kent Community Health NHS Foundation Trust (KCHFT)
- Kent and Medway NHS and Social Care Partnership Trust (KMPT)
- Kent and Medway Clinical Commissioning Group
- Kent County Council (KCC)
- Maidstone and Tunbridge Wells NHS Trust (MTW)
- Maidstone borough council, Sevenoaks, Tonbridge and Malling and Tunbridge Wells district councils
- West Kent Primary Care (WKPC)

It works collaboratively with other stakeholders including:

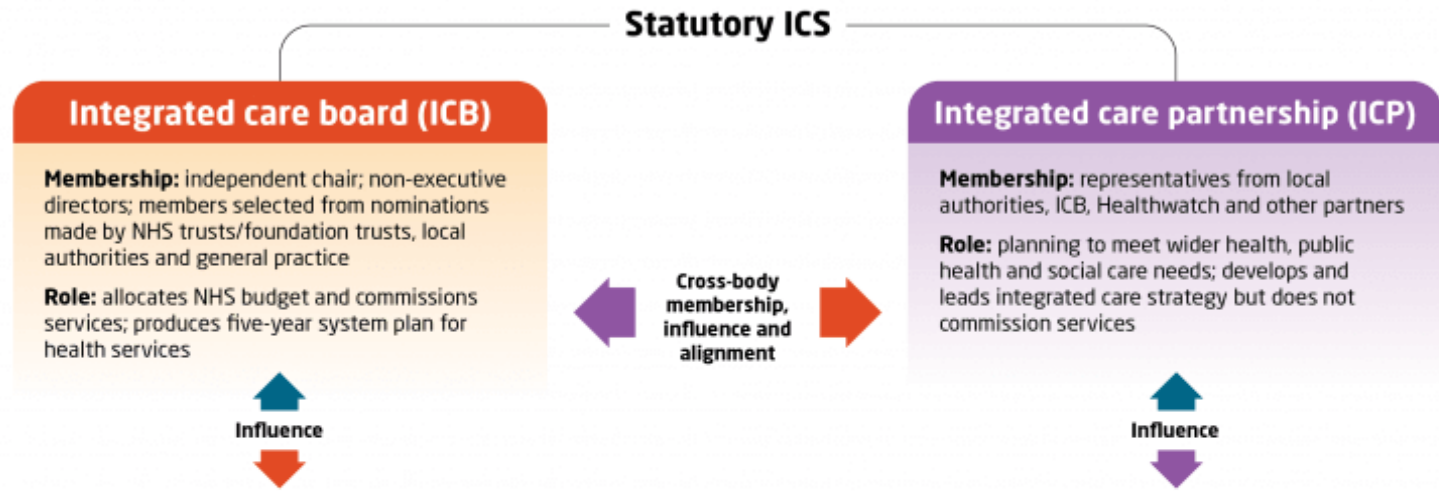
- Healthwatch and other patient/ residents groups e.g. PPGs
- WK voluntary and community groups.
- Council Members
- Hospices, care homes and supporting living providers
- Emergency services and other Kent wide services e.g 111

Integrated care systems (ICSs)

Key planning and partnership bodies from April 2022

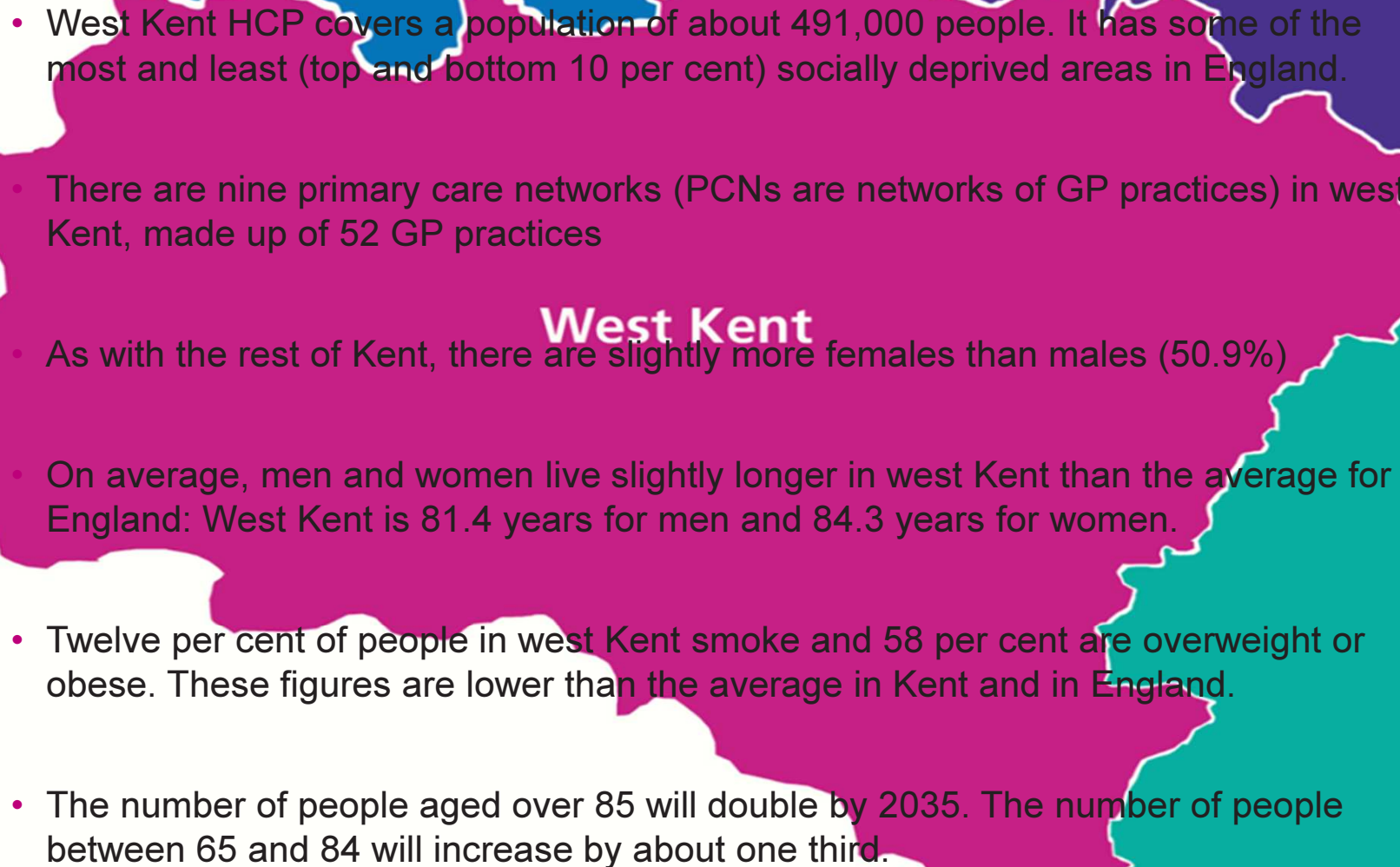
NHS England
Performance manages and supports the NHS bodies working with and through the ICS

Care Quality Commission
Independently reviews and rates the ICS



Partnership and delivery structures		
	Name	Participating organisations
System Usually covers a population of 1-2 million	Provider collaboratives	NHS trusts (including acute, specialist and mental health) and as appropriate voluntary, community and social enterprise (VCSE) organisations and the independent sector; can also operate at place level
Place Usually covers a population of 250-500,000	Health and wellbeing boards	ICS, Healthwatch, local authorities, and wider membership as appropriate; can also operate at system level
	Place-based partnerships	Can include ICB members, local authorities, VCSE organisations, NHS trusts (including acute, mental health and community services), Healthwatch and primary care
Neighbourhood Usually covers a population of 30-50,000	Primary care networks	General practice, community pharmacy, dentistry, opticians

About west Kent

- 
- A map of West Kent is shown in the background, colored in shades of blue, purple, and teal. The text 'West Kent' is written in white across the center of the map.
- West Kent HCP covers a population of about 491,000 people. It has some of the most and least (top and bottom 10 per cent) socially deprived areas in England.
 - There are nine primary care networks (PCNs are networks of GP practices) in west Kent, made up of 52 GP practices
 - As with the rest of Kent, there are slightly more females than males (50.9%)
 - On average, men and women live slightly longer in west Kent than the average for England: West Kent is 81.4 years for men and 84.3 years for women.
 - Twelve per cent of people in west Kent smoke and 58 per cent are overweight or obese. These figures are lower than the average in Kent and in England.
 - The number of people aged over 85 will double by 2035. The number of people between 65 and 84 will increase by about one third.

Our health needs – what do we do well?

The areas where West Kent performs better than the national average:

- Children with excess weight Year 6, three year average
- Percentage of physically inactive adults
- Hospital stays for alcohol-related harm
- Higher Breast cancer screening coverage (females aged 50-70)
- Cervical cancer screening (females aged 25-64)
- Bowel cancer screening (persons aged 60-74)
- Low birth weight of term babies
- Under 18s conception rate / 1,000
- Emergency hospital admissions for asthma and epilepsy (under 19 yrs)
- Emergency hospital admissions for epilepsy (< 19 yrs)
- Deaths from circulatory disease (under 75 years)
- Deaths from all cancer (under 75 years)
- Suicide rate

Our health needs

West Kent falls below national averages in the following areas:

- Hospital admissions due to substance misuse (15-24 years)
- Hypertension (high blood pressure in all ages)
- Diabetes rates (17+)
- Coronary Heart Disease rates (all ages)
- Serious Mental Illness rates (all ages)
- Emergency hospital admissions due to falls (65 and over)

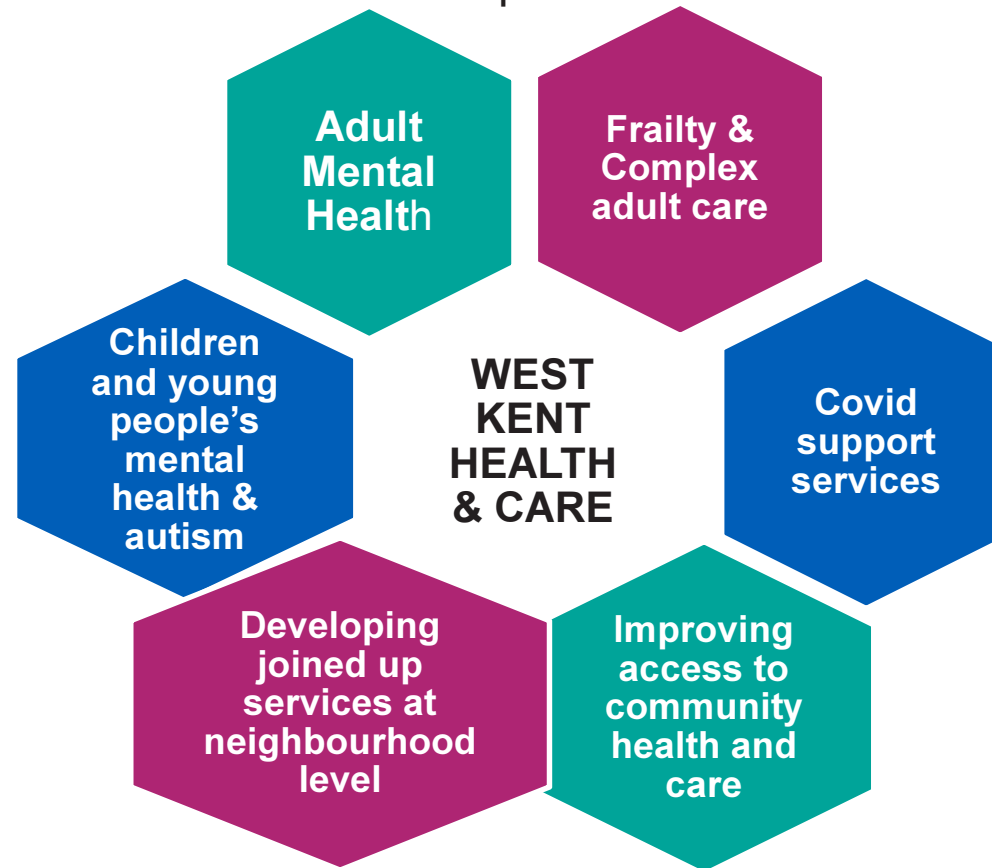
Our Vision

The West Kent Health and Care Partnership is working together to improve the health and well-being of the residents of West Kent. We are working together with residents to:

- make health and care services more accessible and joined up
- improve health and well-being of residents and reducing inequalities
- make sure we get best value from the resources invested in West Kent health and care
- support broader social and economic development

Our priorities

We have developed outline priorities for west Kent, based on the areas where residents of west Kent have worse than expected health outcomes.



Enablers

The West Kent Health and Care Partnership will build strong support arrangements to underpin our work in the priorities including support on:

- Finance
- Estates
- Digital
- Workforce
- Safety
- Population health data and analysis
- Communications and patient engagement

West Kent HCP Key Programme Impact Examples 2020/2021

- **Reduced inappropriate appointments and waiting times for Musculoskeletal (MSK) conditions** – leading to a **£1million saving**. The implementation of a clinical decision unit meant patients are now **referred to the appropriate pathway first time**, rather than being referred from service to service. As the pathway provides for patients to be seen in the community setting, the acute service now has more capacity for elective activity, and therefore improved improve Theatre utilisation.
- **Launched 3 Urgent Treatment Centres** at Maidstone, Sevenoaks and Tunbridge Wells, creating a high quality, **consistent route to access urgent appointments** offered and booked through NHS 111. Providing an additional site at Sevenoaks provided West Kent patients with a green site (i.e. not based in an acute setting) in respect of COVID pandemic.
- Collaboratively launched a **KENT & MEDWAY POST COVID ASSESSMENT SERVICE** giving long COVID patients access to multi-disciplinary advice. **802 patients** referred **since launch in May 2021**.
- Implemented **Video Consultation Appointments (VCA)** across West Kent co-designed with patients. This allowed us to increase from 2000 appointments March 2020 to **120,000 appointments Feb 2021**

West Kent HCP Key Programme Impact Examples 2020/2021 continued

- Collaboratively launched a **West Kent COVID Oximetry@Home service** which allows patient to monitor their own oxygen levels at home, picks up and timely acts on deterioration. Since December 2020 there have been **1793 referrals**
- Successfully transferred the **West Kent Community Paediatrics Service** from the hospital into the community – this increased funding allowed for patients to receive equitable provision across Kent. The change in service will also allow for approximately 96 attendances into the acute Acute Medical Unit to be avoided
- Successfully delivered a **shared West Kent Staff Welfare offer** in response to COVID-19 including shared psychological support; virtual coaching; managing virtual teams

Engaging West Kent patients and residents



The HCP work programme is committed to actively engaged residents and patients at all stages, including:

- Patient representatives on all our key programme groups
- Active engagement with patients and residents on what care and support changes they would like to see in particular areas e.g. frailty and mental health
- Co-production of clinical models with patients and residents eg VCA, PCAS
- Feedback from patients and residents on new developments as they are implemented to support the QI cycle e.g. discharge and community diabetes clinics
- We will work with patients to develop a patient involvement charter.

Next steps for West Kent HCP

- Engage partners and residents in the development of an HCP **road map** and **delivery of priorities**
- Refine the **governance** and **infrastructure in the light of the ICS development** and national legislation
- **Improve our communication with staff and residents** in all areas of our work
- Develop a **shared learning platform** to expand and initiate new joint organisational development and training opportunities.

ANY QUESTIONS?

West Kent Health & Care Partnership

This page is intentionally left blank