

HEALTH LIAISON BOARD
16 September 2015 at 2.00 pm

At the above stated meeting the presentations were shown for the following item:

5. **Children's Centres Progress**

(Pages 1 - 22)

This page is intentionally left blank

Early Help and Preventative Services

16 September 2015

Stuart Collins
Head of Early Help and Preventative Services 0-25
North Kent



Early Help and Preventative Services

County wide 0-19 (and up to 25) service

4 Areas

4-Area Heads of Service with County Wide Leads

3 Districts in each area

12-District Managers

Open Access (universal)

Targeted work in Units

4-Area Education Leads for Attendance and Inclusion

District Troubled Families Leads

Centralised YOS functions

Centralised referral team – Triage

Centralised PRU, Attendance and Inclusion Service

Heads of Service

	Area	County role
North Stuart Collins	Dartford Gravesham Sevenoaks	Safeguarding and Health
West Nick Fenton	Maidstone Tonbridge & Malling Tunbridge Wells	0-5
East Nigel Baker	Canterbury Swale Thanet	Adolescent (Youth Offer, incorporating Duke of Edinburgh, Youth Participation and Outdoor Education)
South Louise Fisher	Ashford Shepway Dover	5 – 11

Priority Areas

- Safeguarding children and young people from harm
- Preventing problems escalating;
- Focusing services on high need families;
- Improving outcomes for, and meeting the needs of vulnerable children and adolescents;
- Ensuring support to make difference in early years;
- Improving emotional health and wellbeing of children and young people;
- Ensuring early support for disabled children, young people and their families.

Early Help and Preventative Services

The District Leads for Preventative Services

Area Head	Stuart Collins	03000 410 519 Lynn Cartwright 03000, 411 740
Dartford	Tim O'Brien	03000 413 099
Sevenoaks	Christine Kiely	03000 414 270
Gravesham	Sarah Gow	03000 418 162
Area Education Lead Attendance and Inclusion	David Boyd	03000 418 532

PRU, Inclusion and Attendance Service

Appendix 1(g)

Head of PRU, Inclusion and Attendance
1x KR15

Line Managed in Business Management

Senior Support Officer (PRU, Inclusion and Attendance)
1x KR6

Support Officer (PRU, Inclusion and Attendance)
2.5x KR5

Support Assistant (PRU, Inclusion and Attendance)
2.5x KR3

Matrix managed in 0-25 Areas.

PRUs (external link)

Senior Education Lead
1x KR13

Area Education Lead
4x KR12

Attendance Enforcement Team Leader
1x KR10

Child Employment Officer
2x KR7

Outreach Worker (Gypsy, Roma, Traveller & Minority Ethnic)
6x KR7

Inclusion and Attendance Adviser
7.44x KR9

School Liaison Officer
14.32x KR7

Senior Attendance Enforcement Officer
3x KR9

The Approach To Preventative Services

- Provide a single service response so that families, children and young people do not need to move around the system and in and out of different services
- Strengthen earlier intervention through universal settings and to deliver our early help services in families and in and around schools and other universal settings
- Coordinate our services with NHS services, so that we get a more integrated approach with health visitors, school nurses, CHYPS (CAMHS), substance misuse and sexual health workers who all have a role in providing early help
- Use the strengths of families to help themselves and ensure continuity of support for them until they feel things have improved

This page is intentionally left blank



**KCC Early Help & Preventative
Services**

Childrens Centres Sevenoaks District

Presentation

Sevenoaks Health Liaison Board

16 September 2015

Core Purpose



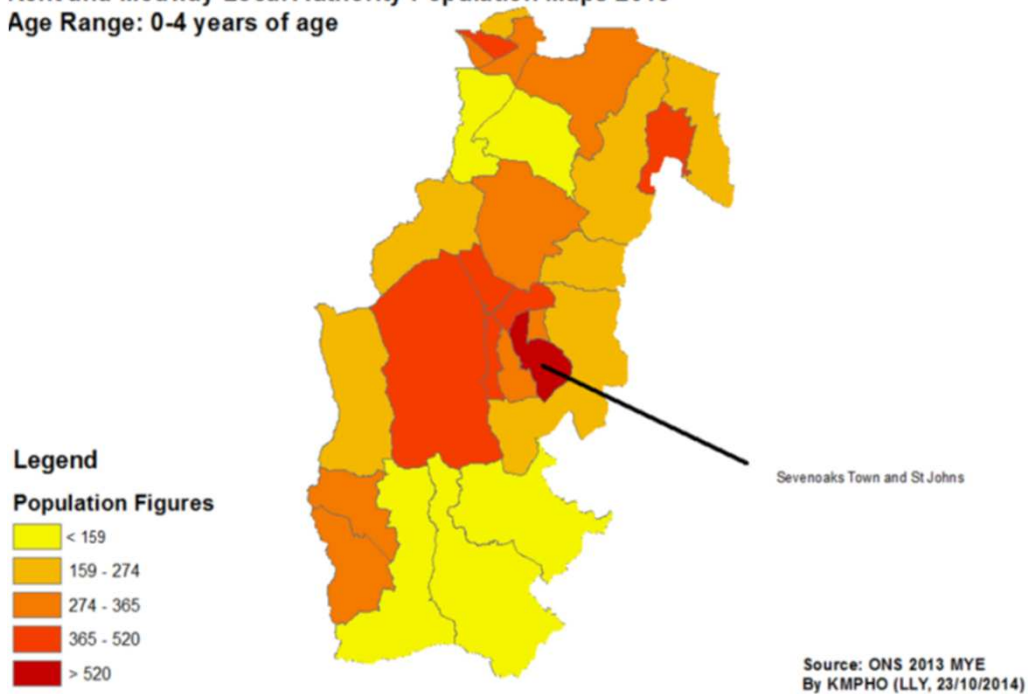
- TO IMPROVE OUTCOMES FOR YOUNG CHILDREN AND THEIR FAMILIES AND REDUCE INEQUALITIES BETWEEN THOSE IN GREATEST NEED AND THEIR PEERS IN:
 - Child development and school readiness
 - Parenting aspiration and parenting skills
 - Child and family health and life chances



Profile

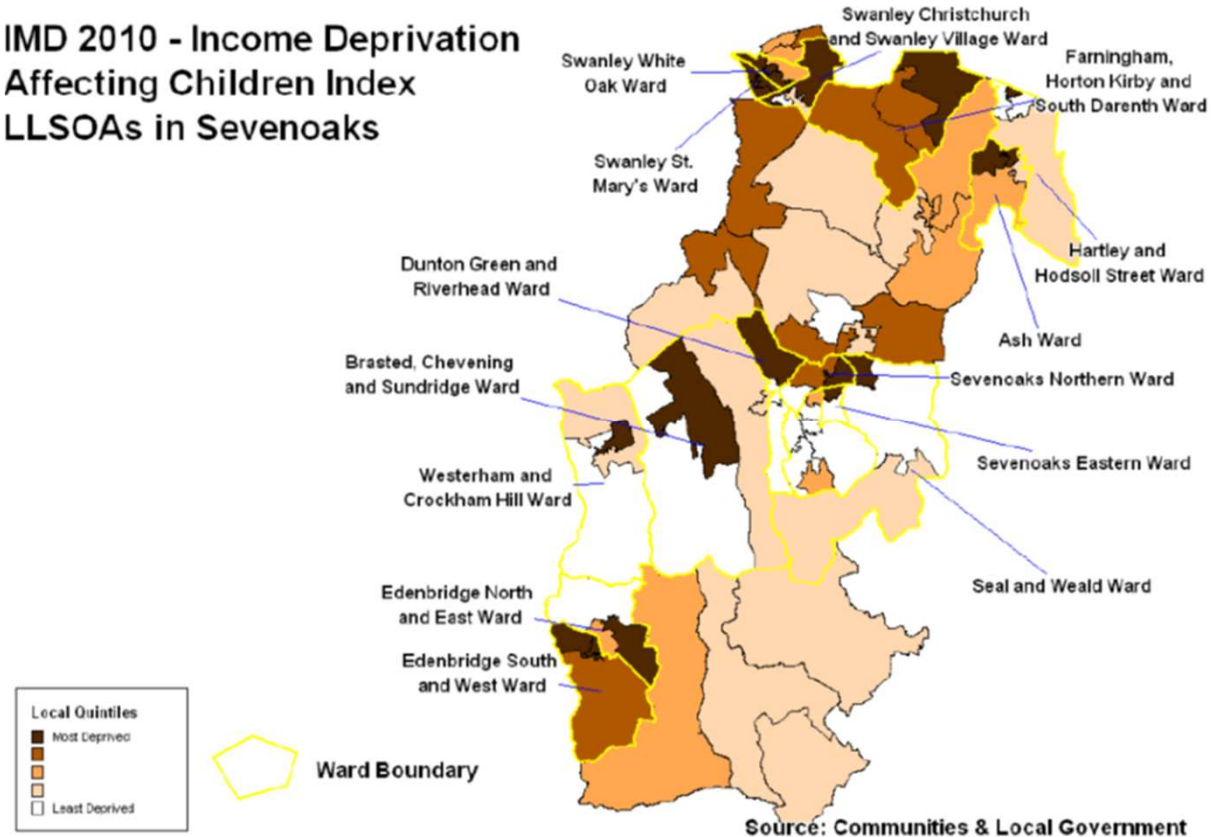
- Total number of 0-4 year olds = 7267
- Highest % in Sevenoaks Town St Johns

Kent and Medway Local Authority Population Maps 2013
Age Range: 0-4 years of age



LSOAs

IMD 2010 - Income Deprivation Affecting Children Index
LLSOAs in Sevenoaks



Centres in Sevenoaks District = 5

- Swanley (Hub)
- New Ash Green
- Edenbridge
- Sevenoaks (Springhouse)
- West Kingsdown (part time)

The Partnership

- Public Health
- Social Care
- Libraries
- Adult Education
- Midwifery
- JCP
- Voluntary Sector
- Commissioned Providers: PSB, CXK etc
- Sevenoaks District Council



Framework OFSTED Inspections



- Overall Effectiveness
- Access to services by young children and families
- Quality and Impact of practices and services
- Effectiveness of leadership and governance and management



Access to Services

- *Local Priorities:*
- Increase Reach
- Target LSOAs
- Increase FF2 uptake
- Increase reach to SCS families
- Increase BME

Quality and Impact of Practices and Services

- *Local Priorities:*
 - Increase breastfeeding rates (Swanley)
 - Obesity
 - Immunisation rates
 - Accidents/injuries
 - Adult Learning / Volunteering / Return to work
 - Increase take up of FF2 entitlement



Effectiveness of leadership and governance and management

Local Priorities:

- Improve Strategic Partnerships of DAB
- Parental Involvement in service design
- Workforce Development
- Monitoring and Evaluation / Data Collection

Progress

- Breastfeeding PSB delivering peer support programme in CCs
- FF2 – Direct contact / Health Clinics
- SCS children – Link social worker / attendance conferences – plan
- Reach – casework to targeted families via Early Help Notification process
- Infant well being – 1 and 2 year checks established at CCs
- Parenting Support – Accredited programmes delivered at CCs
- Adult education offer within local CCs
- Volunteer programme and pathway for parent/users established

Snapshot

Registrations at CCs 69.6% Reach 40.2 %

SCS CP 69% Reach 37.5%

SCS CIN 55.9% Reach 36.4%

GLD (Good level of development) 74.1%

Infants breastfed at 8 weeks 87.4% *

Immunisations 94.9%

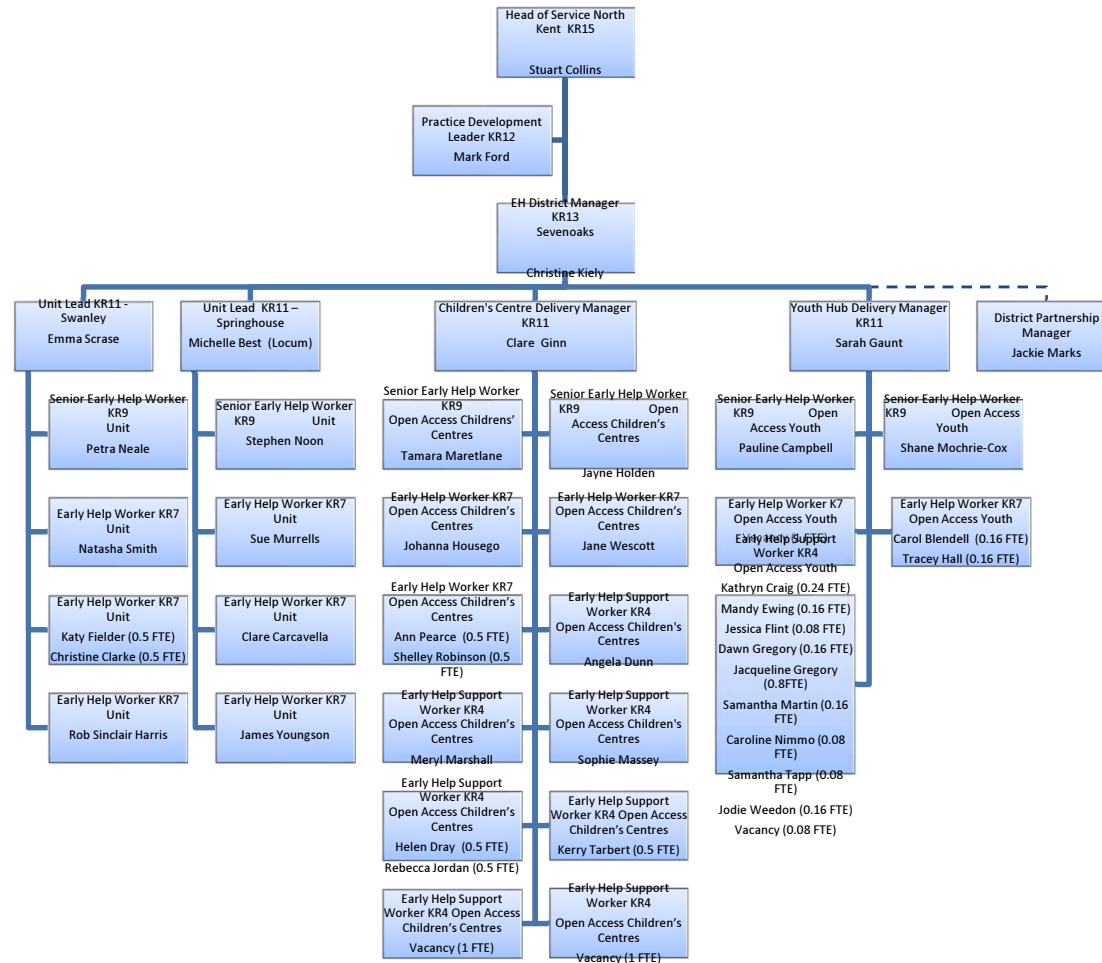
Reception children who are obese 7.5%

Accident rates 13.6%

Free for 2 Entitlement 56.3%



KCC EHPS (inc. Childrens Centres) Structure Chart Sevenoaks District



Sevenoaks Children's Centres

