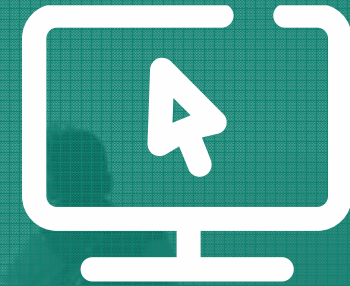


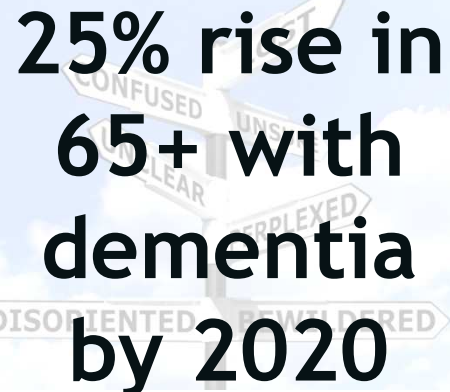


Dementia Friendly Communities in Sevenoaks District

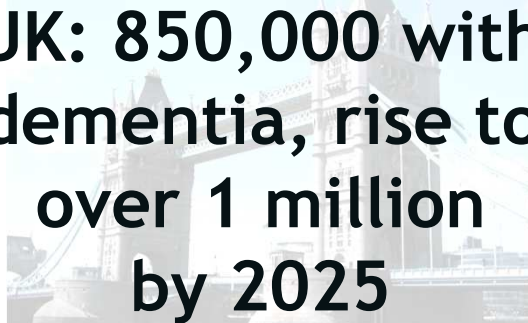


Anton Tavernier-Gustave
Healthy Living Project Co-ordinator


Dementia - The Facts




**25% rise in
65+ with
dementia
by 2020**



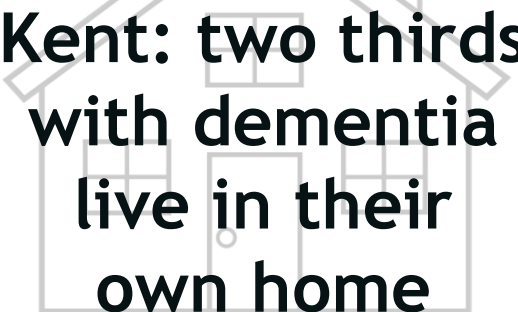
**UK: 850,000 with
dementia, rise to
over 1 million
by 2025**



**UK: 2020 -
35% will be
over 50
2029 - 40%**



**UK: 1 in 5 with
dementia**
(over 65's)



**Kent: two thirds
with dementia
live in their
own home**



**UK: 40,000
younger people
have dementia**
(under 65's)



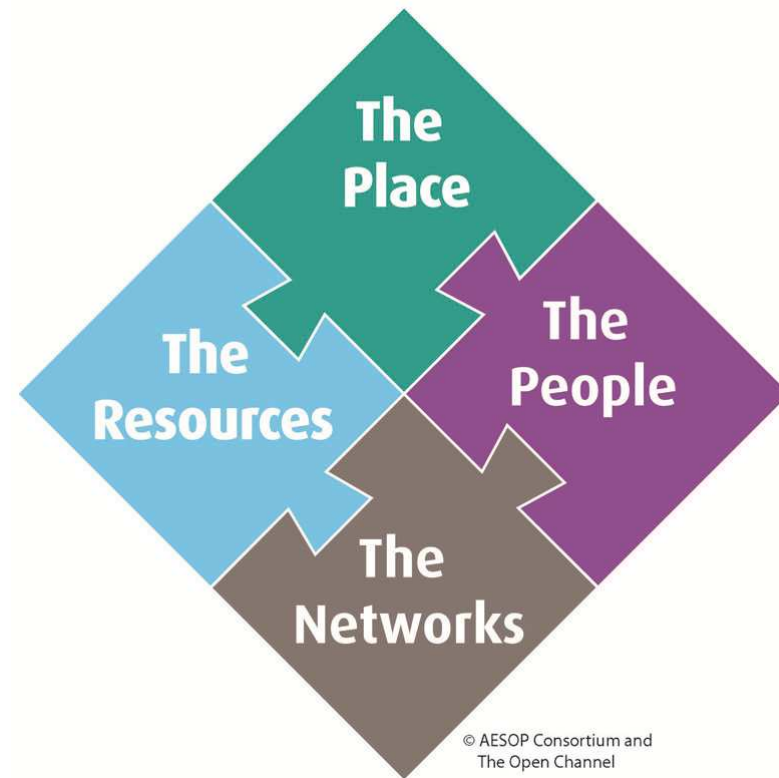
**Kent: 9,100
diagnosed with
dementia,
20,000
undiagnosed**

Local Government Association

5 key areas identified by people with dementia which make a difference:

- Physical Environment
- Local Facilities
- Support Services
- Social Networks
- Local Groups

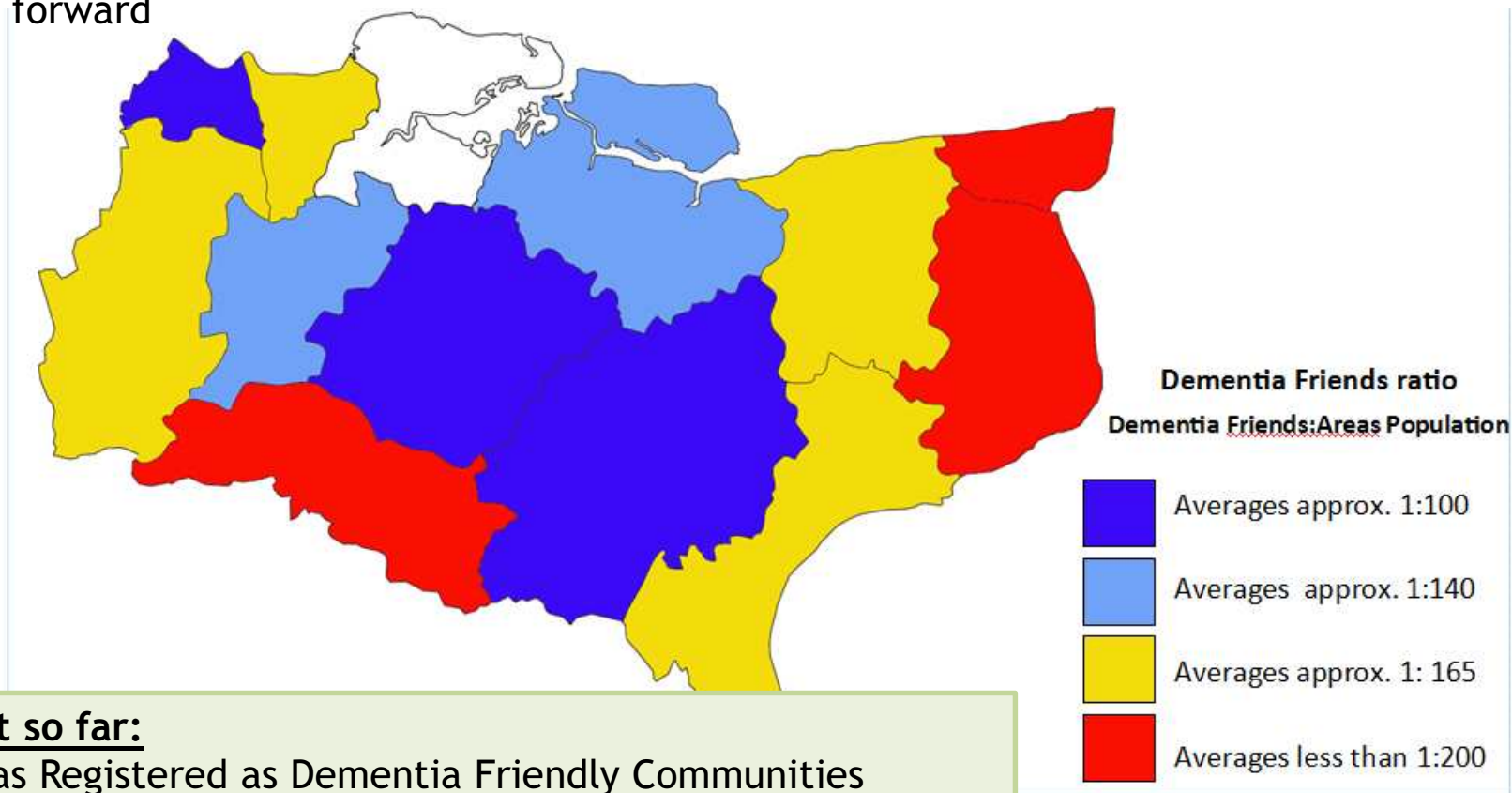
‘Four Cornerstones Model’
for local authorities



Kent Dementia Friends

These slides show the numbers of people attending Dementia Friend’s sessions in Kent (It does not include those completing online)

Across Kent we have an approx. ratio of 1 dementia Friend to 135 Residents
Below shows a rough estimate for each of our districts, the next slide shows the ratio within postcode areas. Which highlights those areas which may need targeting going forward



In Kent so far:

- 10 Areas Registered as Dementia Friendly Communities
- 11 Dementia Action Alliances
- 13 local sub forums /communities

Dementia - Difficulties Experienced

- Problems navigating in complex or confusing environments
- Difficulties in communicating clearly
- Problems remembering what they are doing
- Problems handling money



Small Changes Make a Big Difference

- Staff awareness training
- Clear internal and external signage
- Quiet space
- Consistent lighting
- Non-gloss and flush flooring
- Adequate seating
- Contrasting colours
- Easy to find facilities (ie toilets, exit etc.)
- Clear walkways



Work Progressed to date:

Since 2014:

- Three Dementia Friendly Forums: Sevenoaks Area, West Kent and Swanley - local partners, residents, carers, support agencies
- Dementia Friendly Campaigns and Events (GP's)
- Delivered two consultative events - understanding dementia and local areas
- Community awareness events
- Darent Valley Hospital Dementia Buddy Scheme
- Carer Support Groups (Swanley)
- Six new dementia cafes launched
- Manual workers (Dunbrick Staff)



Work Progressed to date:

Dementia Cafes launched in:

- Edenbridge
- Westerham
- Hartley
- Sevenoaks town
- West Kingsdown
- Swanley

Forget-me-not Cafés
🌸 *Companionship over a cuppa* 🌸



Work Progressed to date:

- Mapping existing dementia services
- Over 220 Council staff and Members trained as Dementia Friends;
- 30 frontline officers trained as Dementia Champions
- Carer's Support Drop-in running at SDC offices (Carer's First)
- Stakeholder Focus Group held - dementia sufferers, workers and carers on what more SDC can do
- Launch of website www.dementiafriendlykent.org.uk



Future Work:

- Shop Safe ID System - launching March 2016
- SDC - Dementia Friendly Reception
- Dementia Event 'Coping with Dementia - Wed 24 February, SDC Offices
- More Dementia Friend Training for staff, Members, partners, businesses, taxi drivers and community transport drivers.
- Actions progressed through Dementia Friendly Forums
- Dementia Friendly supported housing schemes
- GP & other Dementia Awareness Workshops/Events

A dementia friendly community is friendly for all!

Events & Campaigns

www.dementiafriendlykent.org.uk

The screenshot shows the website header with the logo 'Dementia Friendly Kent' and the tagline 'Living well with Dementia'. A navigation menu includes 'Home', 'About Us', 'Help & Advice', 'My Area', 'Learning', and 'News'. A search bar is also present. Below the menu, a breadcrumb trail reads 'You are here | Home > My-area/projects > West Kents Venture into Dementia'. A sidebar on the left lists 'In this section...' with links for 'My Area', 'Projects', and 'Events'. The main content area features the heading 'West Kents Venture into Dementia' with sub-sections for 'Venture into Dementia' and 'Background'.

Lets talk about Dementia

Monday 7th July 2014, 11am - 2pm
 Orchard Academy, St Marys Road, Swanley, BR8 7TE

Understand dementia? Want to learn more?
 This event will help you better understand how people can live well with dementia and what support is available locally.

Dementia Networking Event

Feb 16th 2016

Longfield Academy
 Main Road, Longfield, Kent

Presentations, Workshops and Networking

Let's talk about dementia

Dementia affects more than 820,000 people in the UK and many of us may know someone who is affected by this life changing disease.

We are working closely with Kent County Council, the Sevenoaks District Seniors Action Forum, support organisations and local communities to make the District a more dementia friendly place.

Local people with dementia have told us they want to maintain their social networks, feel they belong in their community and continue to live the life they had before their diagnosis.

launched earlier this month to engage more people across the District.

Everyone can play a part in supporting people with dementia and their carers. As part of this work, we continue to run 'Dementia Friend' training to help people to understand dementia and the support available. We are leading the way and we have already trained over 100 of our staff and partners as 'Dementia Friends'. We are also looking at physical changes to our building signage to be more dementia friendly.

If you would like to take part in Dementia Friend training or would like to get involved in Dementia Friendly Communities Forums please call us on 01732 227000 or e-mail healthyliving@sevenoaks.gov.uk

If you have any questions or concerns about dementia, you can call the dedicated Kent Dementia Helpline anytime on the freephone number 0800 500 3014 or visit www.alz-dem.org

www.sevenoaks.gov.uk

A Dementia Adventure

Wednesday 21st May 2014 10am-3pm

There are over 820,000 people living with dementia in the UK today, many of us may have a close friend or family member with dementia. It is not a natural part of ageing, and does not only affect the elderly.

People affected by dementia have told us they want to....

- Pursue hobbies and interests and "go out" more.
- Find our way around and be safe.. Use "normal places" and local facilities.
- Support others in their community by volunteering.
- Live the life we had before diagnosis.
- Maintain our social networks so we feel we belong in the community



Dementia