

DIRECT & TRADING ADVISORY COMMITTEE
21 January 2016 at 7.00 pm

At the above stated meeting the attached presentation were shown at the meeting:

6. **Household Waste Recycling Promotional Campaigns**

(Pages 1 - 40)

Richard Wilson

This page is intentionally left blank

Kent Resource Partnership

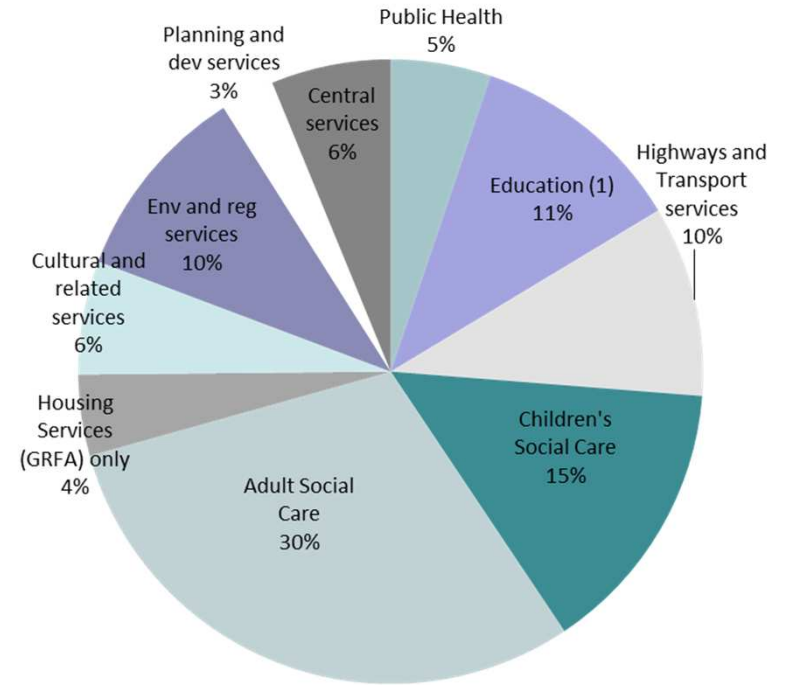
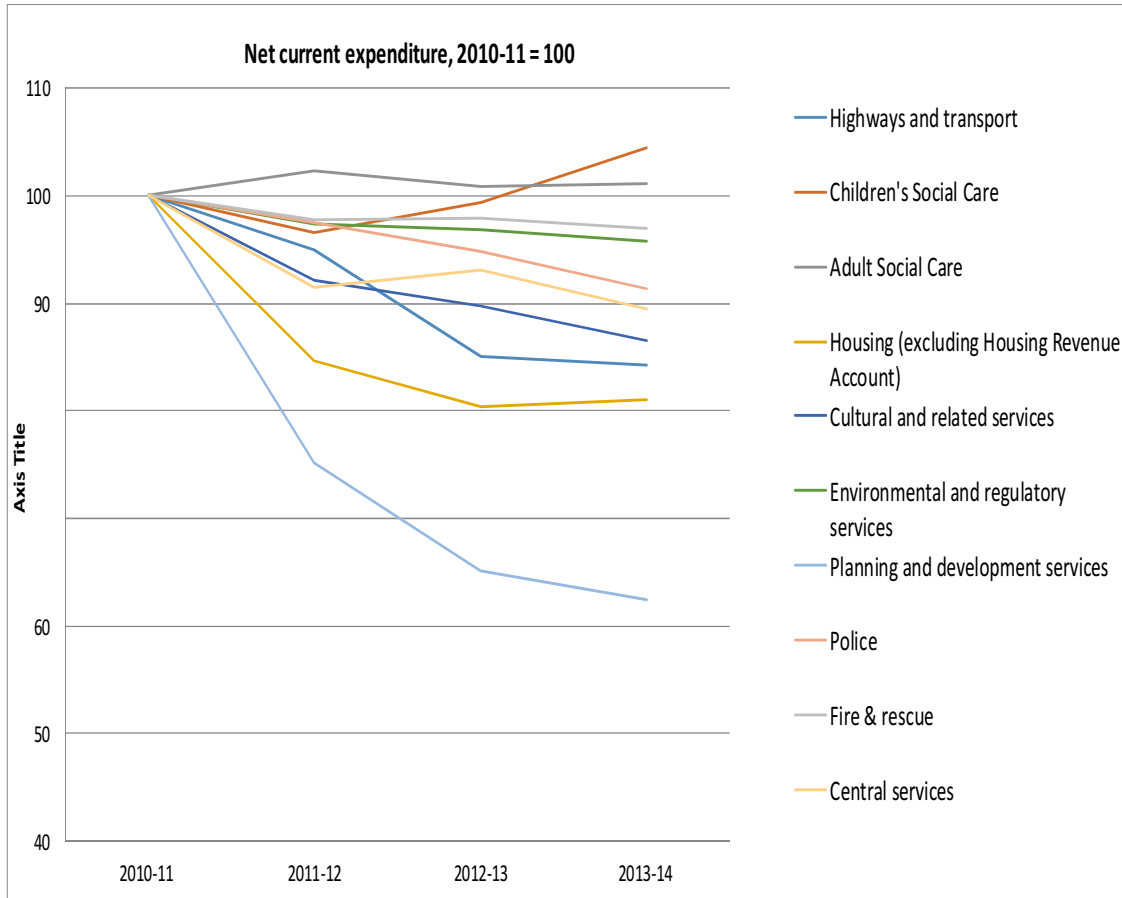
‘Household waste recycling promotional campaigns: Why?’

Sevenoaks DC
Direct & Trading Advisory Committee
21 January 2016

Paul Vanston, KRP Manager



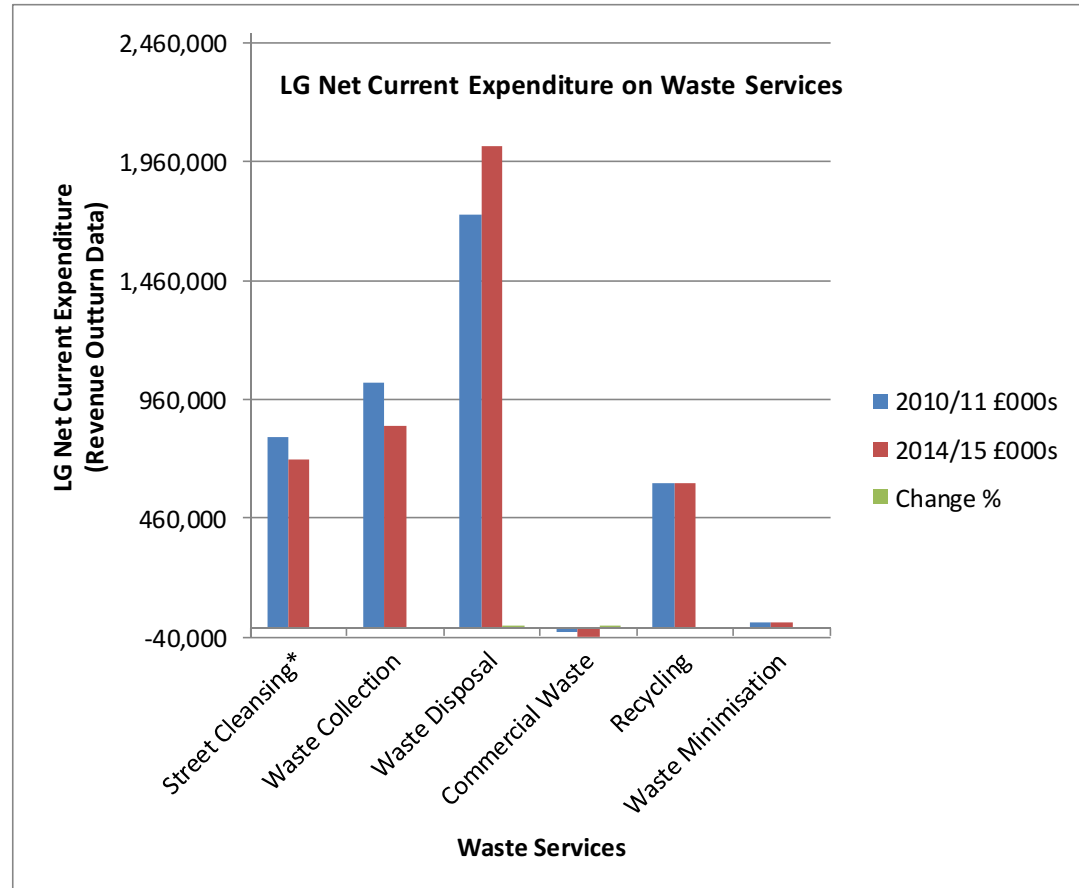
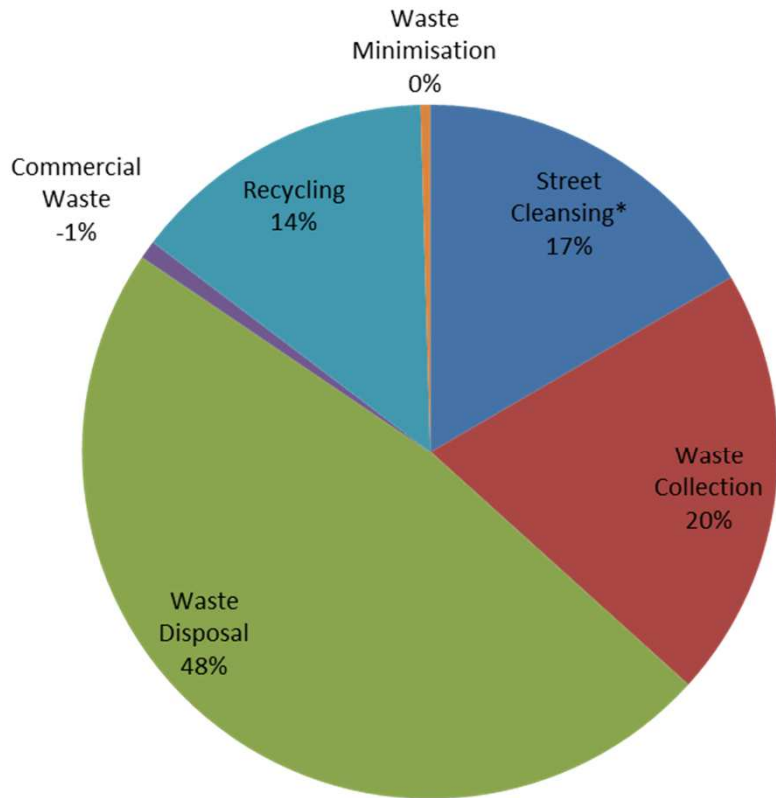
Impacts on councils of national finances



Source: DCLG, September 2015 (Local Gov't Finance Revenue Outturn Figures)

How much is spent on recycling, waste & cleansing?

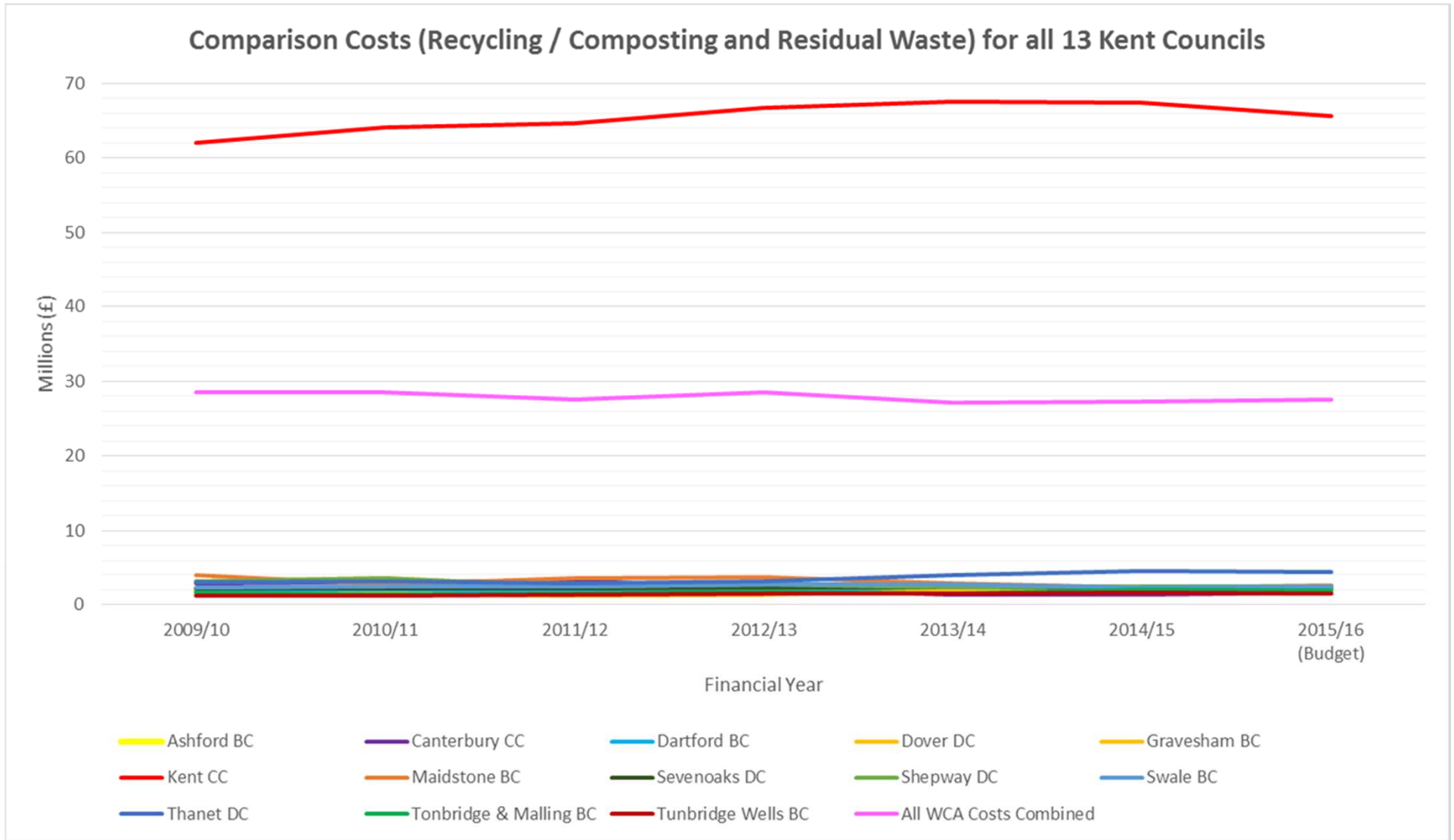
Total local gov't net expenditure on waste and street cleansing services in 2014/15 was around **£4bn**



Though LG expenditure on waste services has decreased, waste services are increasing their share of total local authority service expenditure (7.6% from 6.4%)

Source: DCLG, September 2015 (Local Gov't Finance Revenue Outturn Figures)

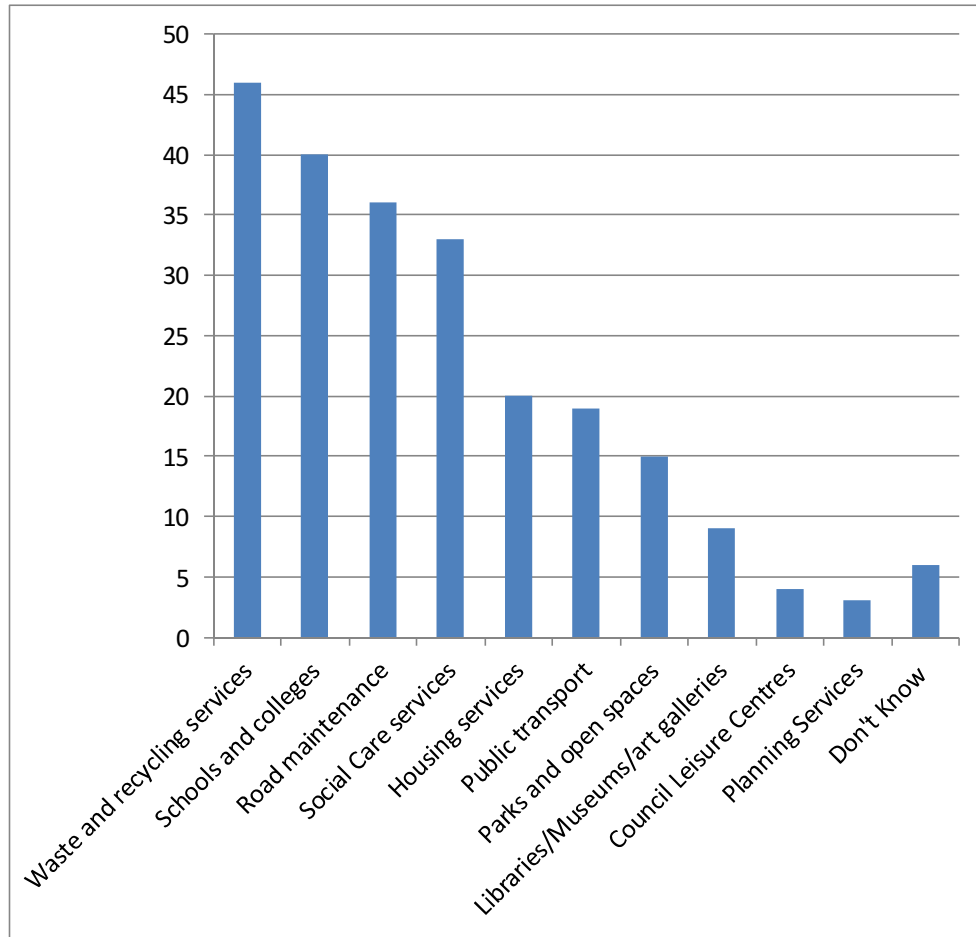
Districts' and County Costs – Comparison of Scale



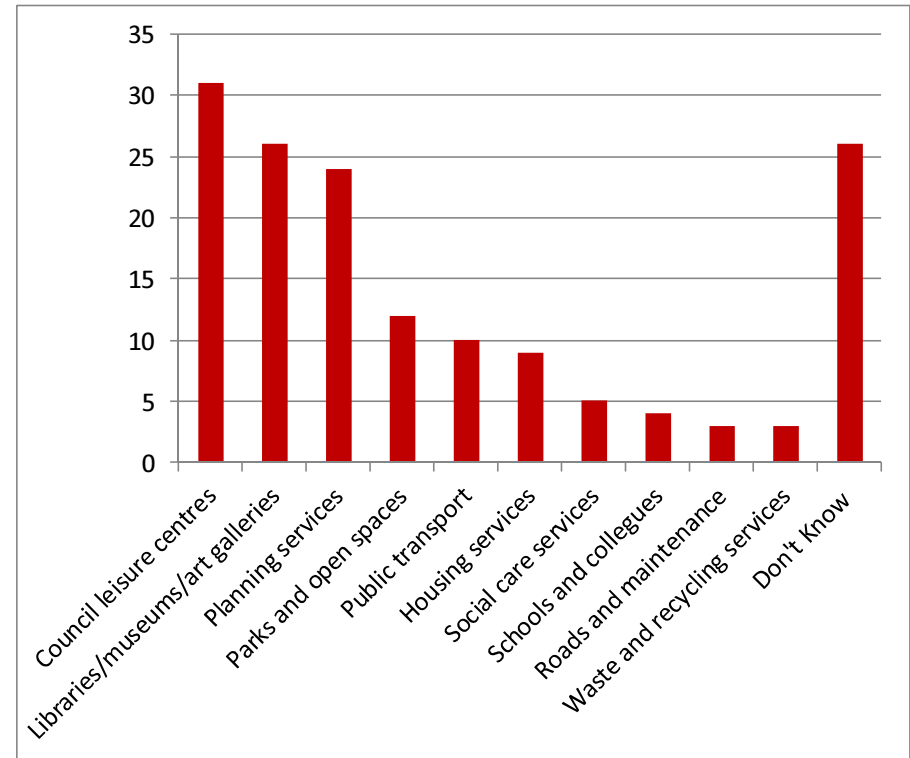
Residents' views are ... ?

A 2013 You Gov poll found waste and recycling services are the most important service provided by the council.

Which of the following do you believe is the MOST important thing provided by your local council (Please tick up to three)?

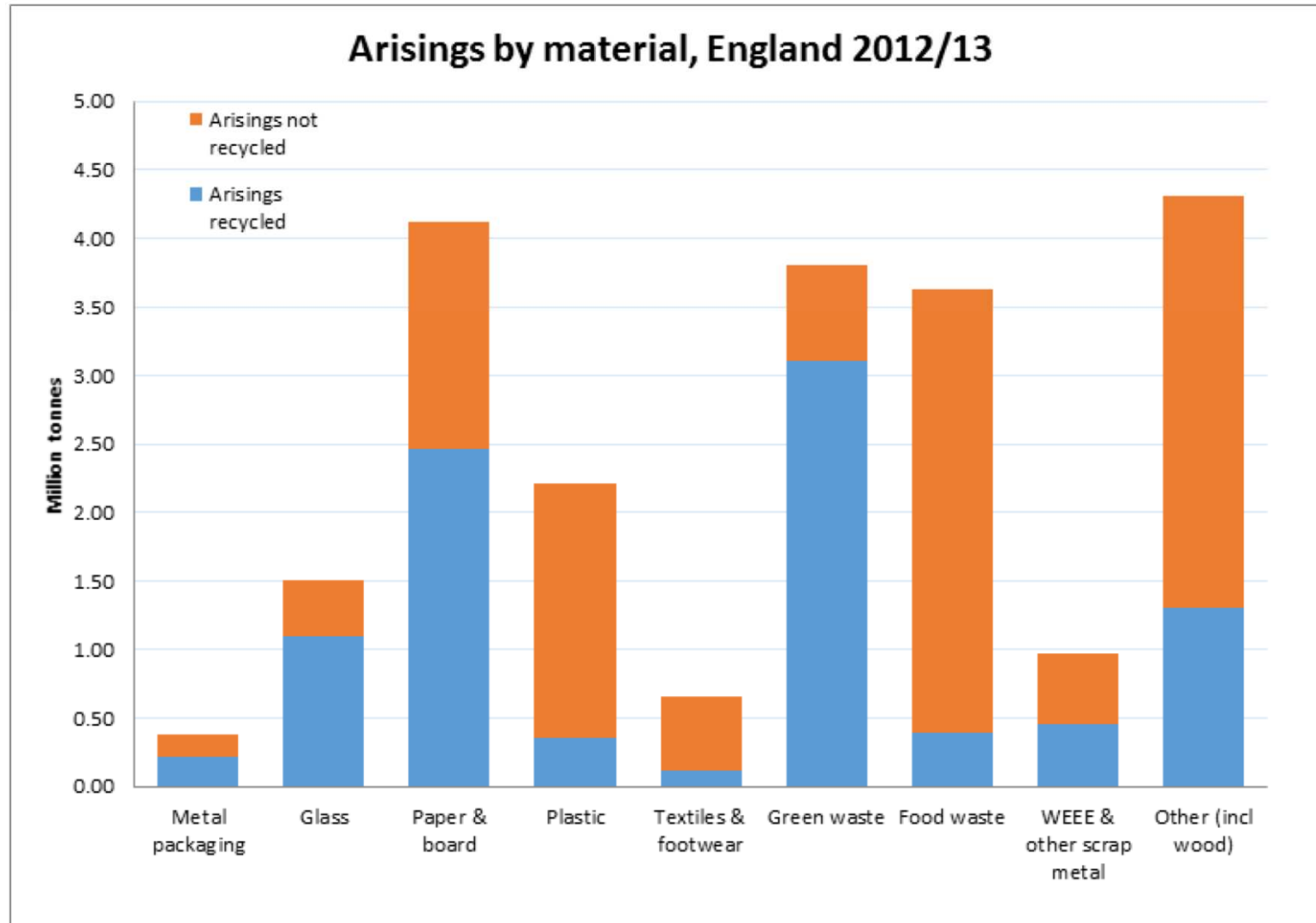


Which of the following do you believe is the LEAST important thing provided by your local council (Please tick up to three)?



Source: DCLG, September 2015 (You Gov poll of 2013)

What goes into the bins? Opportunity or cost?



Source: WRAP, October 2015

Why does the Partnership exist?



Waste and Emissions Trading Act 2003

32 Joint municipal waste management strategies: England

- (1) The waste authorities for a two-tier area must, at all times after the end of the period of 18 months beginning with the day on which this Act is passed, have for the area a joint strategy for the management of –
 - (a) waste from households, and
 - (b) other waste that, because of its nature or composition, is similar to waste from households.
- (2) The waste authorities for a two-tier area must keep under review the policies formulated by them for the purposes of subsection (1).

That's the original legal reason.

However, the Kent Resource Partnership has established for itself: -

- Joint work on **reducing costs** is mutually essential.
- We **protect our interests** e.g. legal, money, performance, taxpayers.
- We **maximise our 'clout'** with private sector and government.
- External funding is scarce – **increase our chances together.**
- Are there really any better alternatives to managing costs/performance?



Michelle Obama, First Lady of the United States,
Speech in London, June 2015

*‘It’s not enough to
want change.*

*You have to know how to
effect change’.*

How is the KRP effecting change?

- Joint working between Kent councils
 - East and Mid Kent Projects: avoiding £60 million of costs
- Approx. £10 million in external funds into services & communications
 - £1 million from WRAP and private sector bodies
 - £8.8 million from DCLG
- Substantial 'clout' with government and supply chain
 - 'At the negotiating table' on behalf of local gov't (e.g. formation of Regulations).
 - Ministerial attention and support for Kent initiatives
- KRP colleagues influencing national agenda
 - Advisory Committee on Packaging (ACP)
 - Local Authority Recycling Advisory Committee (LARAC)
 - National Association of Waste Disposal Organisations (NAWDO)
 - WRAP: Courtauld 2025, Food Waste, Communications, Plastics, Electricals, Textiles
 - Resource Association
 - Chartered Institution of Wastes Management

Public-Private Collaborations



£70,694



£10,000



£30,000



£70,000
(to be finalised)

£110k



Industry Press Coverage – 19 & 20 January 2016

letsrecycle.com

NEWS VIDEOS EVENTS PACKAGING

Batteries Business Councils ELVs-Tyres Energy General Glass Legislation Metals Organ

Whitham Mills ENGINEERING WHITHAM MILLS

COUNCILS

19 JANUARY 2016 by Tom Goulding

Kent gains over £100,000 for fresh recycling drive

The Kent Resource Partnership has received more than £100,000 to fund plastics and metal recycling communications across 11 local authority areas.

Over £70,000 has been secured via Authorities' fund – and a further £40,000 from WRAP's "Increasing Communications Through Local Authorities" fund, and a further £40,000 from

CIWM Journal Online

New to CIWM J Why not try our

CIWM HOME NEWS & INSIGHT MEMBERSHIP KNOWLEDGE TRAINING & DEVELOPMENT EV

AMCS AMCS ERP - Truly end-to-end waste and recycling software solutions

HOME NEWS ARCHIVE MAGAZINE ARCHIVE OPINION VIDEO ADVERTISING CONTACTS

Kent Resource Partnership Wins £110,000 Funding

Posted on 19 January 2016 by Darrel Moore

The Kent Resource Partnership (KRP) has won funding of £70,694 from WRAP's "Increasing Communications Through Local Authorities" fund, and a further £40,000 from

for organisations, ed today (19

money will be port important ations to over

Kent Resource Partnership

resource

Daily news and features for the waste to resources industry

Thu 21 Jan 2016

Search

NEWS MATERIALS BUSINESS GOVERNMENT RESOUR

GOVERNMENT UK LOCAL AUTHORITY

KENT SECURES £110K FUNDING FOR RECYCLING COMMS

By Edward Perchard | 20 January 2016 | Add a Comment

PRINT E-MAIL SHARE

Public-Private Collaborations



Jan 2016



Feb & March 2016

Focus for next 4 years: 'Big ticket' projects

- **West Kent Project:** financial & performance benefits.
- **East and Mid Kent Projects:** preparing for future phases (2021 and 2023 respectively).
- **Reducing avoidable food waste:** with WRAP, Courtauld 2025 Project.
- **Recyclates:** improving quantity and quality across Kent. Audits of 'residual waste' taking place in 2015/16.
- **Protecting councils' interests:** legal, financial, performance, reputations, influence/clout. Communicating with residents can provide strategic and legal benefits.

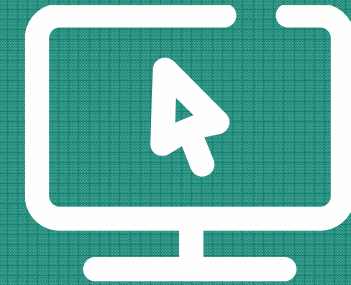
Thank you very much for listening.



@PaulVanston

Household Waste Recycling Promotional Campaigns

January 2016 Update



Charles Nouhan
Recycling and Commercial Manager

What we do...



What we do...





These are the items that we have been collecting for years...



...as well as plastic bottles...

Page 20



...and we now collect these:



plastic pots, tubs, and trays



drink & food cartons

KRP Financial Support to the Districts 2014/15 and 2015/16



Increasing Residents' Participation, Reducing Contamination, Improving Performance

Based on 64 pence per household, proposed financial support to districts is as follows: -

District Council	Number of Dwellings (source: Waste Data Flow)	64p per household	Exact Calculation £ (Dwellings x 64p)	Proposed Budget £ (Rounded up to nearest £100)
Ashford BC	51,170	64p	32,748.80	£32,800
Canterbury CC	65,300	64p	41,792.00	£41,800
Dartford BC	41,360	64p	26,470.40	£26,500
Dover DC	50,530	64p	32,339.20	£32,400
Gravesham BC	42,000	64p	26,880.00	£26,900
Maidstone BC	66,690	64p	42,681.60	£42,700
Sevenoaks DC	48,680	64p	31,155.20	£31,200
Shepway DC	49,340	64p	31,577.60	£31,600
Swale BC	60,350	64p	38,624.00	£38,700
Thanet DC	65,660	64p	42,022.40	£42,100
Tonbridge & Malling BC	50,410	64p	32,262.40	£32,300
Tunbridge Wells BC	47,890	64p	30,649.60	£30,700
	639,380		409,203.20	£409,700

KRP Financial Support to the Districts 2014/15 and 2015/16



Increasing Residents' Participation, Reducing Contamination, Improving Performance

Based on 64 pence per household, proposed financial support to districts is as follows: -

District Council	Number of Dwellings (source: Waste Data Flow)	64p per household	Exact Calculation £ (Dwellings x 64p)	Proposed Budget £ (Rounded up to nearest £100)
Ashford BC	51,170	64p	32,748.80	£32,800
Canterbury CC	65,300	64p	41,792.00	£41,800
Dartford BC	41,360	64p	26,470.40	£26,500
Dover DC	50,530	64p	32,339.20	£32,400
Gravesham BC	42,000	64p	26,880.00	£26,900
Maidstone BC	66,690	64p	42,681.60	£42,700
Sevenoaks DC	48,680	64p	31,155.20	£31,200
Shepway DC	49,340	64p	31,577.60	£31,600
Swale BC	60,350	64p	38,624.00	£38,700
Thanet DC	65,660	64p	42,022.40	£42,100
Tonbridge & Malling BC	50,410	64p	32,262.40	£32,300
Tunbridge Wells BC	47,890	64p	30,649.60	£30,700
	639,380		409,203.20	£409,700

Centre pages, December 2014 In Shape

Remember

We want all your plastic pots, tubs, trays and bottles in your clear recycling sacks

- ✓ **All pots**
(e.g. yoghurt pots)
- ✓ **All tubs**
(e.g. ice cream and margarine tubs)
- ✓ **All trays**
(e.g. fruit, vegetable, meat and ready-meal trays)
- ✓ **All bottles**
(e.g. drink bottles, detergent and other household cleaning bottles, personal care and baby care product bottles)
- ✓ **All plastic lids**
- ✗ **Black plastic**
(e.g. black ready meal containers and black tubs)
- ✗ **Films**
(e.g. peel-back lids)
- ✗ **Bags**
(e.g. carrier bags and cereal bags)

Which other items can I recycle in my clear sacks?



You can now recycle your plastic pots, tubs and trays



To learn more about your improved weekly recycling service, visit
www.sevenoaks.gov.uk/recycling
 e-mail recycling@sevenoaks.gov.uk
 or call us on 01732 227000



Pull up banner in SDC Reception December 2014



**You can now
recycle plastic
pots, tubs and
trays with
all your
plastic bottles**



**in your clear
recycling sack**

To learn more about your
improved recycling service, visit
www.sevenoaks.gov.uk/recycling



Royal Mail leaflet drop to all households -
February 2015

You can now recycle your plastic pots, tubs and trays

Remember

We want all your plastic pots, tubs, trays and bottles in your clear recycling sacks

- | | | |
|--|---|---|
| <p>✓ All pots
(e.g. yoghurt pots)</p> <p>✓ All tubs
(e.g. ice cream and margarine tubs)</p> <p>✓ All trays
(e.g. fruit, vegetable, meat and ready meal trays)</p> | <p>✓ All plastic bottles
(e.g. drinks bottles, detergent and other household cleaning bottles, personal care and baby care product bottles)</p> <p>✓ All plastic lids</p> | <p>✗ Black plastic
(e.g. black ready meal containers and black tubs)</p> <p>✗ Film lids
(e.g. peel back lids)</p> <p>✗ Bags
(e.g. carrier bags, bread and cereal bags)</p> |
|--|---|---|

Which other items can I recycle in my clear sack?



To learn more about your improved weekly recycling service, visit www.sevenoaks.gov.uk/recycling
e-mail recycling@sevenoaks.gov.uk
or call us on **01732 227000**

 **recycle**
for Sevenoaks


Sevenoaks
DISTRICT COUNCIL

Plastic pots, tubs, trays and bottles now go in your clear recycling sack



Everything from **yoghurt pots** and **bakery trays** to **shampoo** and **milk bottles** can now be recycled.

They get turned into new products, like fleece jackets, park benches and new plastic packaging.

Compared to using raw materials, this saves precious natural resources and cuts down on the amount of carbon dioxide released in the manufacturing process.

Fact

It takes a quarter of the energy to make a plastic bottle from recycled plastic as from new materials.

Fact

In the UK, householders use around 1.5 million tonnes of plastic packaging every year.

Top tips

- You can include plastic pots, tubs, trays and bottles from all around the house – not just the kitchen.
- **Don't crush your containers** and please **rinse them out**.
- The tops or lids from your pots, tubs, trays and bottles can be recycled if you put them on.
- Pop all plastic packaging in your clear recycling sack with your plastic bottles and put it out on the same day as usual. Make sure there are no plastic films or carrier bags.

What can't we recycle?

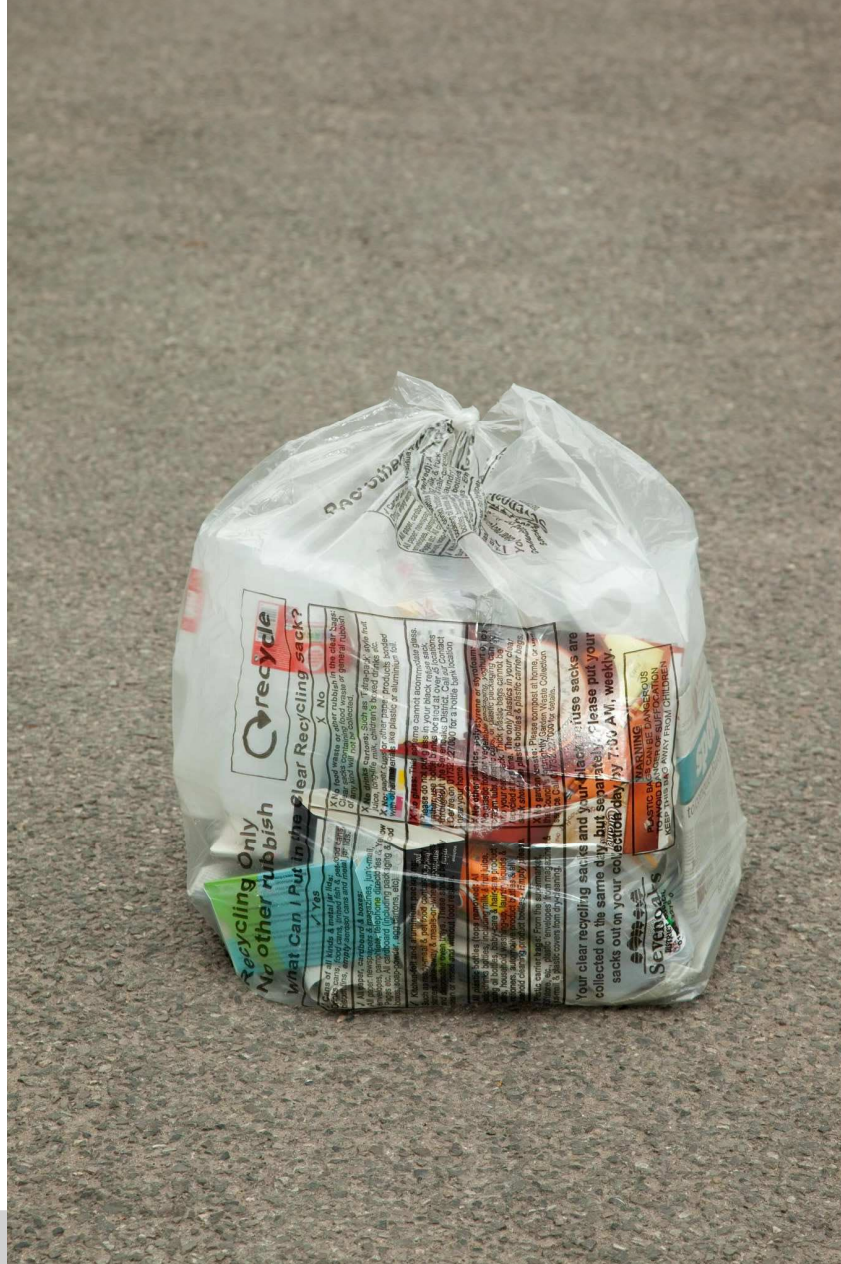
At the moment we can't collect plastic films or plastic bags from your house.

Plastic pots, tubs and trays which are **black** in colour can't be recycled either.

The reason we can't recycle black plastics is that the sorting facility uses machines which can't recognise that colour.



February 2015





Recycling Only



Recycling sacks and large flattened cardboard boxes are collected every week from your property boundary

Please put your recycling out by 7:00 AM on your collection day

What can I put in this sack?

✓ Yes please!

Clean paper: newspaper, magazines, books, junk-mail (out of the envelope), envelopes, leaflets, catalogues, phone directories, Yellow Pages®, shredded and other household paper.

Metal cans, tins, bottle tops and jar lids from: drinks, food and pet-foods - rinsed and clean please! Metal biscuit and sweet tins with their tops, and empty aerosol cans too.

Clean cardboard boxes and packaging from: foods, cereals, soap-powders, teas, biscuits, hand towel and toilet roll tubes, egg cartons and postal deliveries. **Please flatten boxes!** Extra large boxes can be taken to one of our 60 cardboard and paper recycling banks.

Plastic bottles (put loose tops in sack) from: drinks, milk, juice, cooking oils, personal care products, household washing-up and laundry liquids, baby and all household cleaning products - all rinsed please! No plastic bottles from hazardous chemicals or motor oil please!

Aluminium packaging and clean kitchen-foil from: takeaways, ready-meals, meals-on-wheels, party platters, pet foods, single-use pie tins and oven trays - rinsed and clean please, without food residue or liquids in them!

Plastic pots, tubs, trays and lids from: yoghurt, soup, butter, margarine, ice cream, ready-meals, takeaways, microwave foods, meats and cheeses, fruit baskets, laundry detergents and plastic egg cartons - rinsed and clean please! **BUT NOT BLACK POTS, TUBS, TRAYS, OR THIN FILM LIDS.** The recycling centre cannot take black plastics or lids at this time; all other colours are recycled.

Drink and food cartons: Tetra Pak® branded and other drink, food, juice, milk, soup and long-life product cartons - rinsed and clean please without food residue or liquids in them!

X No thanks!

X No food waste, other rubbish, liquids, broken glass, syringes, medical waste, other metals or electrical goods: recycling sacks containing such wrong items will not be collected.

X No glass bottles or jars: please use bottle banks at one of our 50 recycling sites.

X No clothing or shoes: Please use clothing and shoe banks at one of our 50 recycling sites.

X No garden waste: please compost grass, pruning and other garden waste at home, or try our easy and affordable fortnightly Garden Waste Collection Service. Call for details.

X No plastic bags, cling film, polystyrene or Styrofoam packaging, crisp packs, pet food pouches, or thin film lids from pots, tubs or trays. NO BLACK POTS, TUBS, TRAYS OR LIDS.

X No paper cups or plates: paper items that are wet, soiled with food, or bonded to other materials like wax, plastic, or aluminium are not recyclable. Put these items in your black sack.

Your collection days: see them online at www.sevenoaks.gov.uk/collectiondays



WARNING:
PLASTIC BAGS CAN BE DANGEROUS. TO AVOID DANGER OF SUFFOCATION, KEEP THIS BAG AWAY FROM CHILDREN.



Now 30 recycling sacks on a roll

An A4 gatefold recycling guide in every roll of recycling sacks

We've made some big improvements to the Sevenoaks District's weekly recycling service, so that you can recycle more than before. You can now put plastic pots, tubs and trays, and food and drink cartons, into your clear recycling sacks.

And don't forget, you can also recycle all your food and drink cans, large tins, empty aerosol cans, foil trays and clean kitchen foil, plastic bottles, all your paper and cardboard, and even telephone directories!

You can now recycle your plastic pots, tubs and trays, and your cartons

Fix this reminder to your fridge, inside of a kitchen cupboard door, or another easy to check location.



Find out more about your improved weekly recycling service visit www.sevenoaks.gov.uk/recycling email recycling@sevenoaks.gov.uk or call us on 01732 227000

 sdc_newsdesk  sevenoaksdc

 recycle for Sevenoaks

 Sevenoaks DISTRICT COUNCIL

An A4 gatefold recycling guide in every roll of recycling sacks

Recycle Right

What can I recycle in my clear recycling sack?

Please **flatten** any cardboard boxes. **Empty and rinse** your plastic bottles, cans, and containers but **don't** flatten them.

YES Please ✓

 mixed paper & card  cardboard	<ul style="list-style-type: none"> ■ Boxes (flattened) ■ Cardboard ■ Catalogues ■ Envelopes 	<ul style="list-style-type: none"> ■ Food Packaging Sleeves ■ Junk Mail ■ Magazines ■ Newspapers 	<ul style="list-style-type: none"> ■ Pamphlets ■ Sheet Paper ■ Telephone Directories ■ Yellow Pages
 plastic bottles (Tops off and put in the sack)	<ul style="list-style-type: none"> ■ Alcoholic Beverages ■ Baby Care Products ■ Cooking Oil ■ Hair Care Products 	<ul style="list-style-type: none"> ■ Household Cleaning Products ■ Laundry Products ■ Milk 	<ul style="list-style-type: none"> ■ Soft Drinks ■ Water Bottles
 plastic pots, tubs & trays (Put lids and tops back on)	<ul style="list-style-type: none"> ■ Butter ■ Fruit Baskets ■ Ice Cream ■ Laundry Detergents 	<ul style="list-style-type: none"> ■ Margarine ■ Meats & Cheeses ■ Microwave Foods ■ Plastic Egg Cartons 	<ul style="list-style-type: none"> ■ Ready - Meals ■ Soup ■ Takeaways ■ Yoghurt
 drink & food cartons (Rinse please)	Tetra Pak® branded and other drinks, food, juice, milk, soup and long-life product cartons. Rinsed and clean please without food residue or liquids in them!		
 food tins & drink cans  foil  aerosols	<ul style="list-style-type: none"> ■ Aluminium Party Platters, Takeaway and Meals on Wheels Containers ■ Biscuit & Cookie Tins 	<ul style="list-style-type: none"> ■ Coffee & Tea Tins ■ Drink Cans ■ Empty Aerosol Cans ■ Foil Pet Food Containers ■ Food Cans 	<ul style="list-style-type: none"> ■ Kitchen Foil ■ Metal Jar Lids ■ Pet Food Cans ■ Ready - Meals ■ Tinned Fish Cans

The items listed below are examples of what **MUST NOT** be put into recycling sacks or general waste sacks:

NOT in clear sacks ✗	<ul style="list-style-type: none"> ■ Batteries ■ Black Pots, Tubs, Trays ■ Clothing, Textiles, Shoes ■ Electrical Goods ■ Food Waste ■ Glass ■ Hoover Bags 	<ul style="list-style-type: none"> ■ Large Plastic Items ■ Needles* ■ Other Metals ■ Paper Cups, Plates ■ Plastic Bags ■ Polystyrene ■ Styrofoam 	NOT in black sacks ✗	<ul style="list-style-type: none"> ■ Car Parts ■ Chemicals/Pesticides ■ Dead Animals ■ Electrical Goods ■ Florescent Bulbs ■ Garden Implements ■ Garden Waste* 	<ul style="list-style-type: none"> ■ Glass ■ Knives ■ Liquids ■ Medicines* ■ Needles* ■ Paints/Solvents ■ Scissors
-----------------------------	---	---	-----------------------------	---	---

To find out how to properly dispose of these and other hazardous items, please call Kent County Council's waste helpline on **03000 41 73 73**

*Sevenoaks District Council operates a Clinical Waste Collection Service and a Garden Waste Collection Service. Please call 01732 227000 for further details.

How is your recycling and general waste collected?

Sevenoaks District Council collects dry-mixed recycling in clear sacks and general waste in black sacks from your property boundary, or from communal bins in some locations, every week on your scheduled collection day. Recycling sacks and black sacks are collected at the same time, but separately from each other. To keep them apart we collect with split-body vehicles that have one compartment for recycling sacks and another for black sacks. In some areas we collect the two types of sacks with two separate vehicles. Keeping recycling sacks apart from black sacks avoids contaminating the recycling.

It is important to 'Recycle Right', so please make sure that you put the correct things into your recycling sacks and note what cannot go into them, and have your recycling and general waste sacks at your property boundary or in your communal bin by 7am on your collection day.

How often to you get recycling and black sacks?

We deliver a roll of 30 clear recycling sacks and a roll of 20 black general waste sacks to your home every 20 weeks. If you live in a flat, communal building or other multi-occupancy building, please check with your landlord or managing agent about how they provide access to us so that sacks can be easily supplied to you.

If you need more sacks you can get two extra clear and two extra black sacks at no cost from one of our offices or one of our official sacks outlets. For added convenience, you can buy an extra roll so that you do not run out. Call us on 01732 227000 for a location near you.

Glass bottles and jars, and textile recycling

Please do not put glass bottles or jars into your recycling sack or black sacks - they can be taken to one of the 35 public recycling sites across the Sevenoaks District. In addition to glass bottle banks, many sites have banks for newspapers, magazines, large cardboard boxes, clothing and shoes, and books. Contact us for the location of a recycling site near you.

Need to dispose of compostable garden waste?

We can collect garden waste from your property boundary for a small fee. Visit www.sevenoaks.gov.uk/gardenwaste or call us for details.

Still have questions?

To learn more about your kerbside recycling service, our other recycling schemes and your recycling and general waste collection days, please visit: www.sevenoaks.gov.uk/collectiondays. Or you can e-mail: recycling@sevenoaks.gov.uk or call us on 01732 227000.

Thank you for recycling in the Sevenoaks District



In the local papers - March 2015



You can now recycle plastic pots, tubs and trays with all your plastic bottles

Improvements to recycling are clear to see!

Following improvements to Sevenoaks District Council's weekly recycling service you can now recycle more materials than ever before.

The changes mean you can now put most plastic pots, tubs, trays and Tetra Pak style packaging in your clear recycling sacks - materials the Council was previously unable to accept.

And don't forget you can also recycle all other drink and food cartons, empty aerosols, food and drink cans, foil trays, large tins, mixed paper, plastic bottles, cardboard and telephone directories!

Sevenoaks District resident, Irene Whitmarsh, says:

"I really welcome these changes, it's allowing me to recycle so much more and makes me feel happy to know I'm helping to do my bit for the future generations! "

For more information please visit: www.sevenoaks.gov.uk/recycling
Tel: 01732 227000

sd_c_newsdesk
sevenoaksdc

Irene Whitmarsh recycling with her grandchildren

News-Shopper Advertorial

You can now recycle your plastic pots, tubs and trays and cartons

We've made improvements to your weekly recycling service which means you can now put most plastic pots, tubs, trays and food and drink cartons in your clear recycling sacks.

And don't forget you can also recycle all your empty aerosol cans, food and drink cans, foil trays, clean kitchen foil, large tins, plastic bottles, paper, cardboard and even telephone directories!

Find out more about your improved weekly recycling service visit www.sevenoaks.gov.uk/recycling
email recycling@sevenoaks.gov.uk
or call us on 01732 227000

sd_c_newsdesk sevenoaksdc

News-Shopper Advert

You can now recycle your plastic pots, tubs and trays and cartons

We've made some big improvements to the Sevenoaks District's weekly recycling service, so that you can recycle more than before. You can now put plastic pots, tubs and trays, and food and drink cartons, into your clear recycling sacks.

And don't forget, you can also recycle all your food and drink cans, large tins, empty aerosol cans, foil trays and clean kitchen foil, plastic bottles, all your paper and cardboard, and even telephone directories!

Find out more about your improved weekly recycling service visit www.sevenoaks.gov.uk/recycling
email recycling@sevenoaks.gov.uk
or call us on 01732 227000

sd_c_newsdesk sevenoaksdc

Courier & Sevenoaks Chronicle Advert

Ongoing promotional activities...

We regularly speak to public groups

- Hillview School for Girls, Tonbridge - 12 January
 - What happens to all that stuff I throw away at Christmas?
- Women's Institute, Kemsing - 13 January
 - What happens to my recycling, and why?

Proposed but not yet agreed

What happens to my recycling, and why?

- Presentation to District Councilors - Council Chamber
- Presentation to Parish Councils & other community groups - Council Chamber
- Presentation to the public at large - STAG Theatre

January 2016

- Plastics

Your handy guide to **RECYCLING PLASTICS** around the HOME

Good to know

M&S
EST. 1984
M&S supports recycling in Kent using your Council's services

You can **RECYCLE** all of these items from your **BATHROOM**

Good to know

Top tip:
Remember to simply **empty** your plastic bottles - especially bleach and household cleaners.

You can **RECYCLE** all of these items from your **KITCHEN**

Good to know

Top tip:
Remember to simply **empty** your plastic bottles and food containers. A quick rinse will remove remaining food and drink.

Lots of plastics from around your home can be recycled again and again into amazing things:

Good to know
Plastic bottles can be recycled into foody shirts, fleeces and new plastic bottles!

No thanks
These things can't be recycled:

- ✗ Crisp packets
- ✗ Polystyrene packaging
- ✗ Plastic wrapper e.g. sweets and chocolates
- ✗ Plant pots and seed trays
- ✗ Paint pots
- ✗ Plastic bags
- ✗ Plastic/cling film

If you want to find out what happens to your recycling visit www.recyclenow.com

Visit your Council's website for details of your local services

- www.ashtford.gov.uk
- www.canterbury.gov.uk
- www.dartford.gov.uk
- www.dover.gov.uk
- www.gravesham.gov.uk
- www.maidstone.gov.uk
- www.sevenoaks.gov.uk
- www.shepway.gov.uk
- www.swale.gov.uk
- www.thanet.gov.uk
- www.lmbc.gov.uk
- www.tunbridgewells.gov.uk

Your recycling is really making a difference – thanks!

This leaflet has been paid for by the Waste & Resource Action Programme, Marks & Spencer plc and the Kent Resource Partnership (KRP). The KRP is a partnership of all 13 Kent councils, working together to make recycling easier.

Keep this leaflet for reference or please recycle it. This leaflet is available in alternative formats. Please contact 01752 227258

February 2016

- Metals

The more of the that you put in

good to know

Which metal items can I recycle in my recycling container?

- ✓ Drink cans (e.g. cola, beer)
- ✓ Food tins (e.g. baked beans, soup, tomatoes, fish)
- ✓ Pet food tins (e.g. dog and cat food)
- ✓ Empty aerosols excluding lids (e.g. deodorant, hairspray)
- ✓ Foil and foil trays (e.g. clean pie cases, take away and pet food containers)
- ✓ Sweet and biscuit tins
- ✓ Metal caps & closures

Recycling takes little effort and makes a big difference!



All metal is endlessly recyclable. Please take other items not listed (including electrical items) to be recycled at your household waste and recycling centre.

Unfortunately we cannot currently collect all your metal items through kerbside collections. These include: bikes, garden tools, pots and pans, cutlery, empty dried paint tins, door handles, nuts and bolts etc. You can recycle these at your nearest Kent County Council Household Waste and Recycling Centre.

Find your local centre by visiting www.kent.gov.uk/recycling.

Do I need to clean the metals or take anything off?

Yes - please ensure the aerosols are empty and just give your tins and foil a quick rinse. You don't need to remove the label, but if you do, it can also be recycled with your paper.

Recycling sites

There are many recycling sites in your local area to help you recycle a wide range of materials. Take a look at your council website for a full list of locations and materials you can recycle.



Keep this leaflet for reference or please recycle it. This leaflet is available in alternative formats. Please contact 01732 227128



The more of these we can get out

Recycling one can uses 20 times less energy than making a new one.

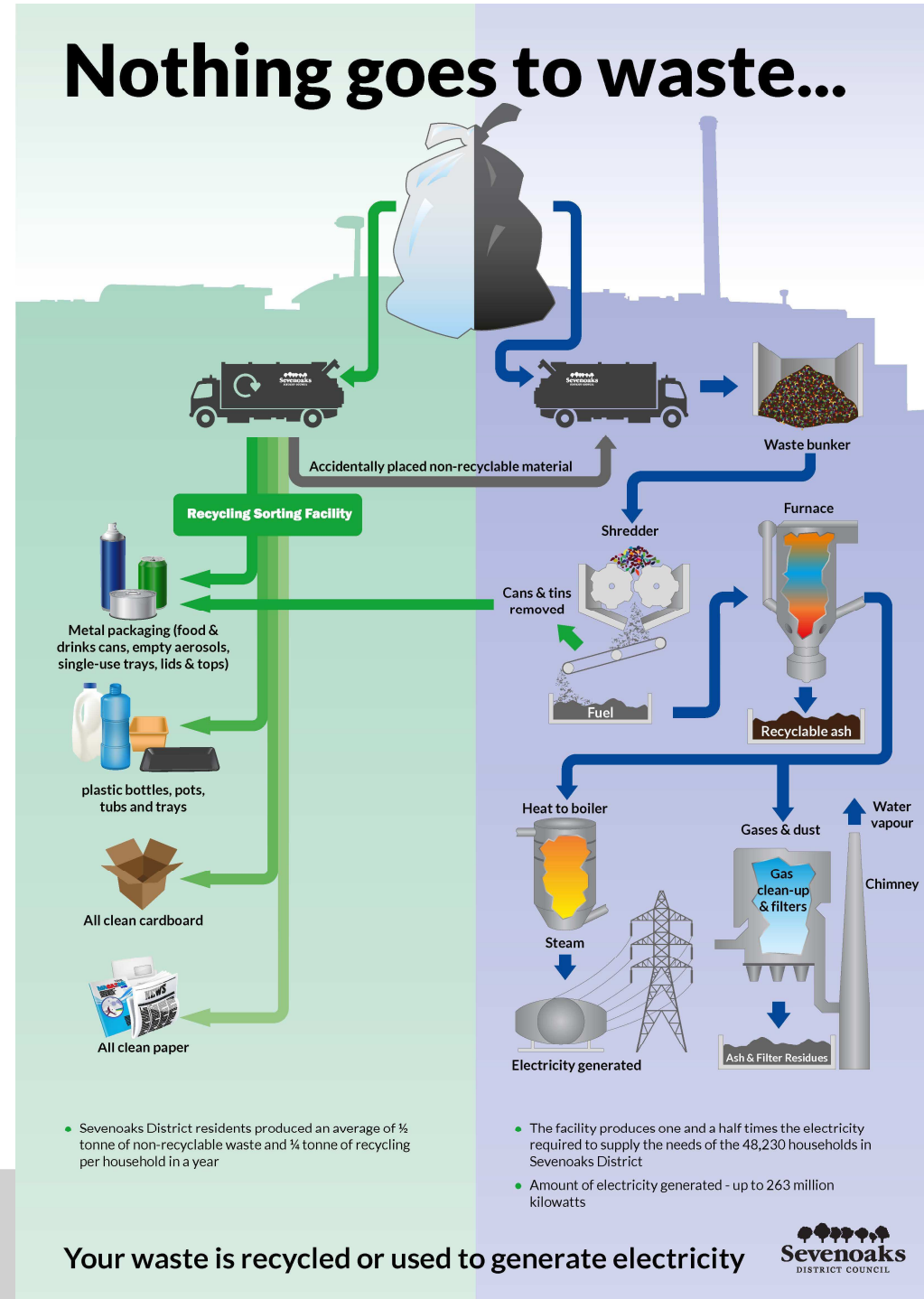
When it comes to recycling, metal is hard to beat. That's because it's endlessly recyclable – so every last bit can be turned into something else, the possibilities are endless. Imagine how much energy you could save.

Within as little as sixty days the empty can you put into your recycling container could be back on the shelf as a new can of cola or a new tin of beans!



Coming soon

Nothing goes to waste...



- Sevenoaks District residents produced an average of 1/3 tonne of non-recyclable waste and 1/4 tonne of recycling per household in a year

- The facility produces one and a half times the electricity required to supply the needs of the 48,230 households in Sevenoaks District
- Amount of electricity generated - up to 263 million kilowatts

Your waste is recycled or used to generate electricity



March 2016

- Paper and card



Black sacks and recycling sacks materials audit

General Waste

- Assess the types of materials currently being placed in 750 household residual waste sacks from kerbside collections
- Assess the types of materials currently being placed in communal residual waste containers serving 750 properties from blocks of flats

Recycling

- Assess the types of materials currently being placed in 750 household recycling sacks from kerbside collections
- Assess the types of materials currently being placed in communal recycling containers serving 750 properties from blocks of flats

Thank you

Charles Nouhan

Recycling and Commercial Manager

charles.nouhan@sevenoaks.gov.uk

01732 227420