

**HEALTH LIAISON BOARD**  
**25 November 2015 at 2.00 pm**

At the above stated meeting the attached presentation was shown for the following item:

**8. District's Health Priorities**

(Pages 1 - 8)

*Hayley Brooks*

This page is intentionally left blank

# District's Action to Health

**‘District Councils are in a good position to influence many factors of good health through their key functions’**

Source: Kings Fund, 2015

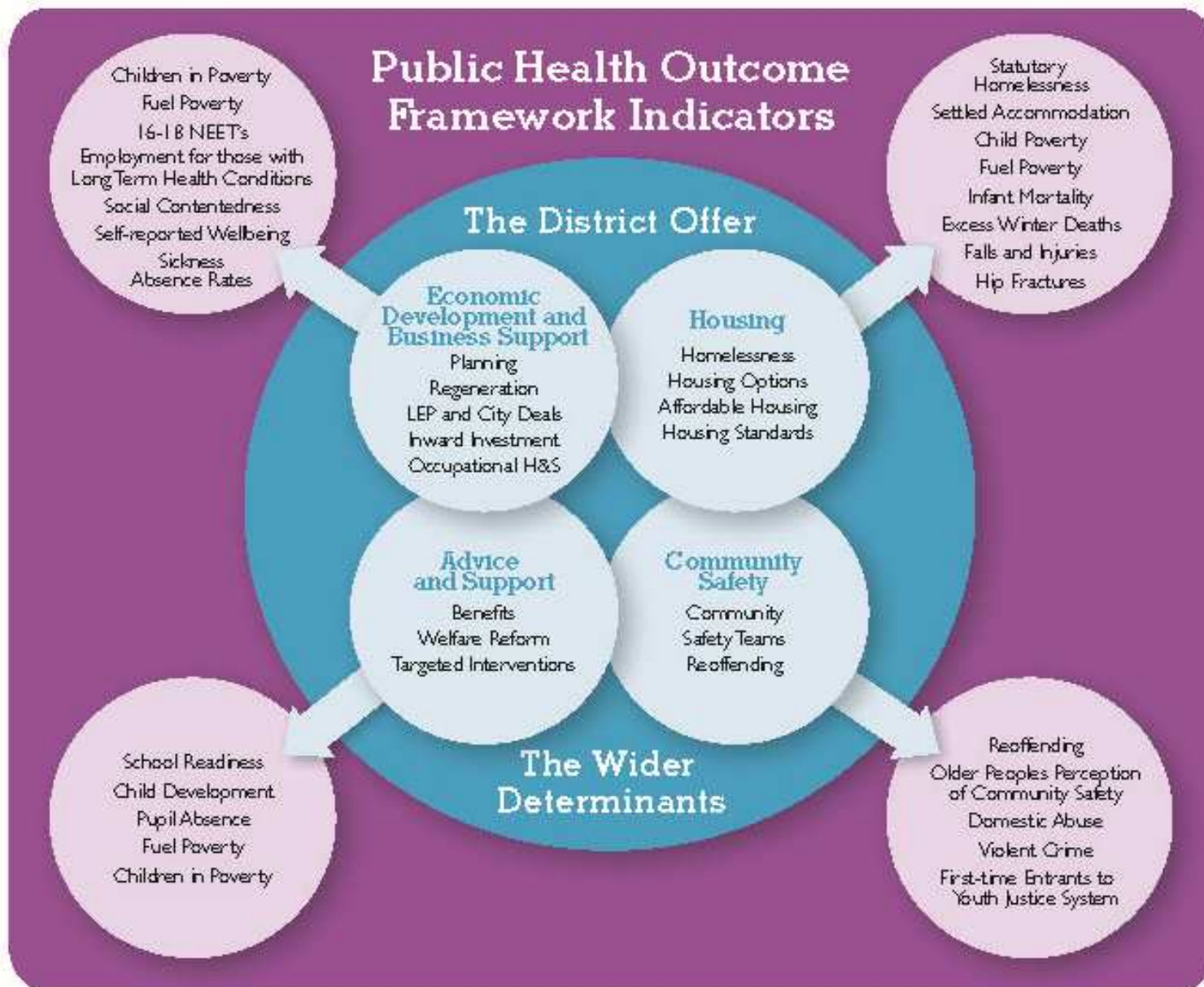
**‘To promote or improve the economic, social and environmental wellbeing of their area’**

Local Government Act, 2000

# District's Action to Health

- Ensure our actions have a positive effect on public health
- To strengthen our enabling role in the health of our communities
- Lead innovation in services and their delivery
- King's Fund Report: The district council contribution to public health (2015)
- Public Health England: 'Healthy People, Healthy Places'
- Policy updates to design in health:
  - Planning Policy and Practices;
  - Housing Standards and Policy;
  - Community Infrastructure Levy;

# The Wider Determinants of Health



# Healthy Places Themes

- Regulatory - Healthy Food & Alcohol Control
- Active and Safe Travel
- Good Jobs and Stay in Work
- Warmer and Safer Homes
- Access to Green Space and Leisure
- Preventative Health and Wellbeing
- Spatial Environment Planning

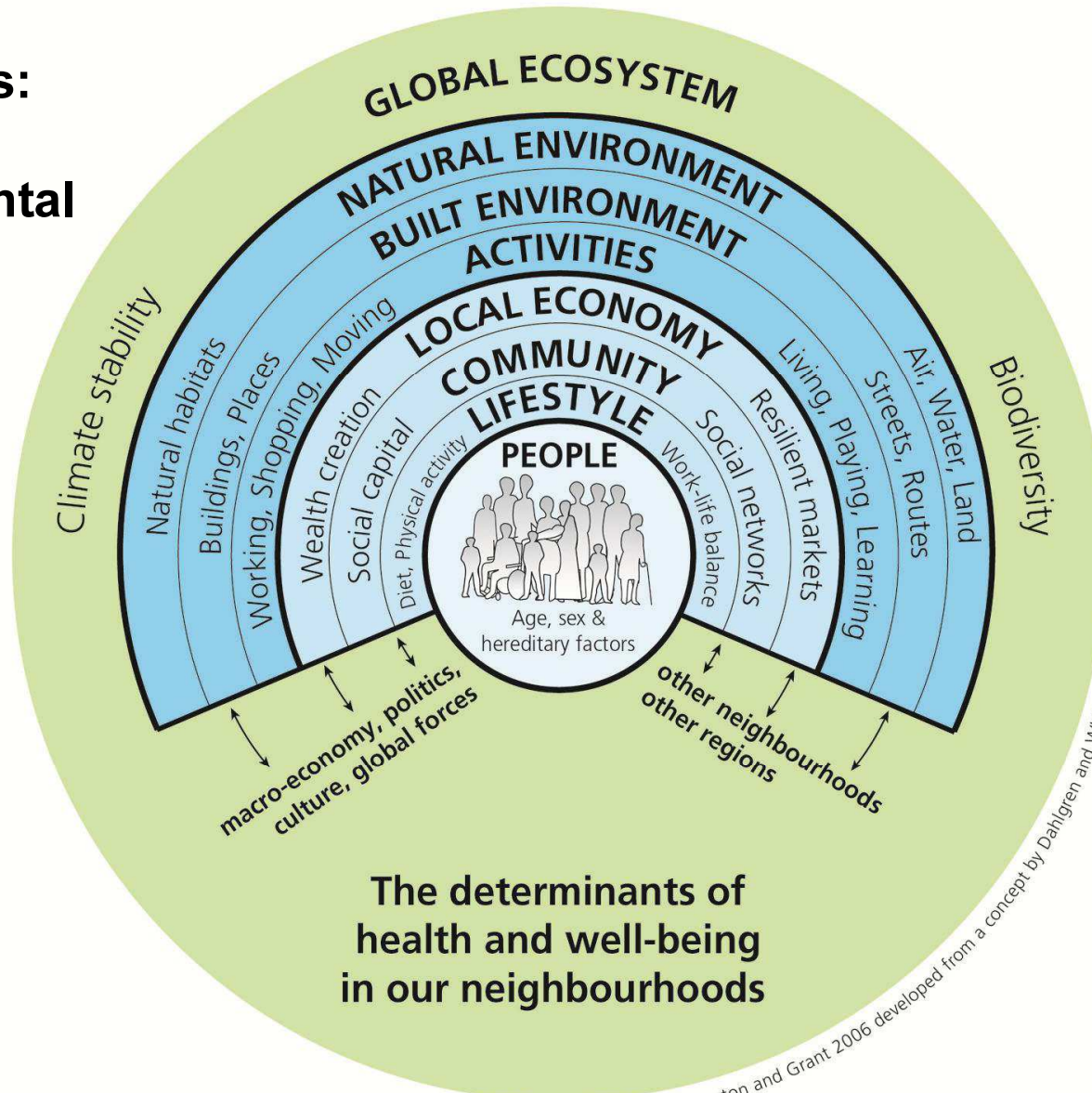
# SDC Health Priorities

- Tackling the rise of obesity
- Supporting people's mental wellbeing and dementia
- Supporting older people to lead fulfilled and independent lives



# The Wider Determinants of Health

**Key Factors:**  
Economic  
Environmental  
Social  
Lifestyle



**The determinants of health and well-being in our neighbourhoods**

The health map: Barton and Grant 2006 developed from a concept by Dahlgren and Whitehead 1991



# Holistic Approach to Health

**Key Factors:** Economic Environmental Social Lifestyle

**Priorities:** Mental Health Older People Obesity

Housing & Health	Planning	Economic & Comm. Development	Direct & Trading Services	Legal & Democratic Services
Warmer and Safer Homes	Active and Safe Travel	Involuntary unemployment	Air Quality	Licensed alcohol premises
HERO Advice and Support	Green and Open Spaces	Training and skills	Smoke Free	Street Vendors
Housing Standards	Planning policy - designing in good health	Employer support	Healthy Food Awards	Licensing policies and guidance
Housing Policy	Spatial Environment	Community volunteering	Healthy Businesses	
Leisure & Sports development	Affordable Homes	Digital Inclusion		

This page is intentionally left blank