

Mid Kent Water  
Presentation  
to  
Sevenoaks District Council  
Thursday 20<sup>th</sup> April 2006







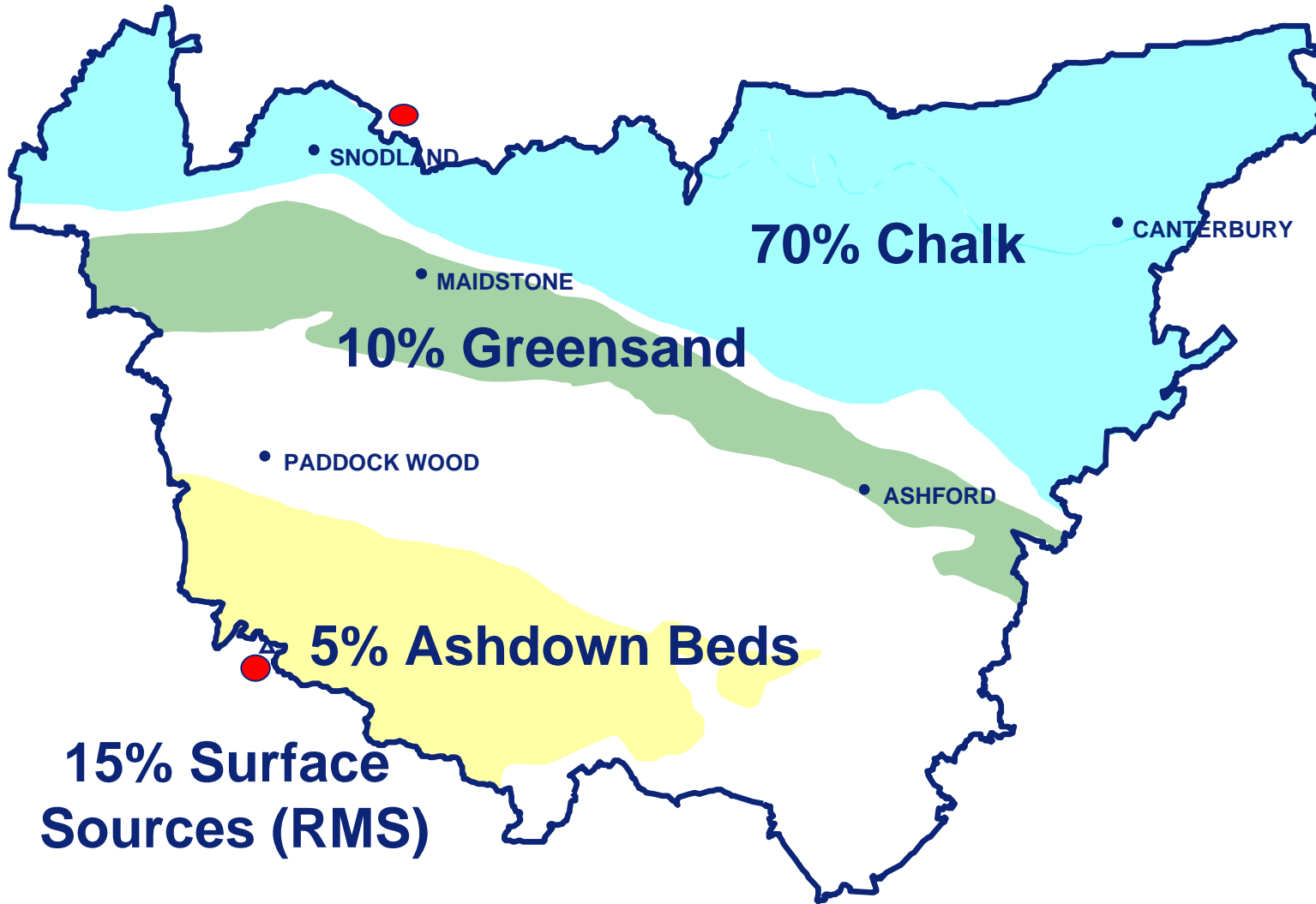
# Weirwood Reservoir 2005

---



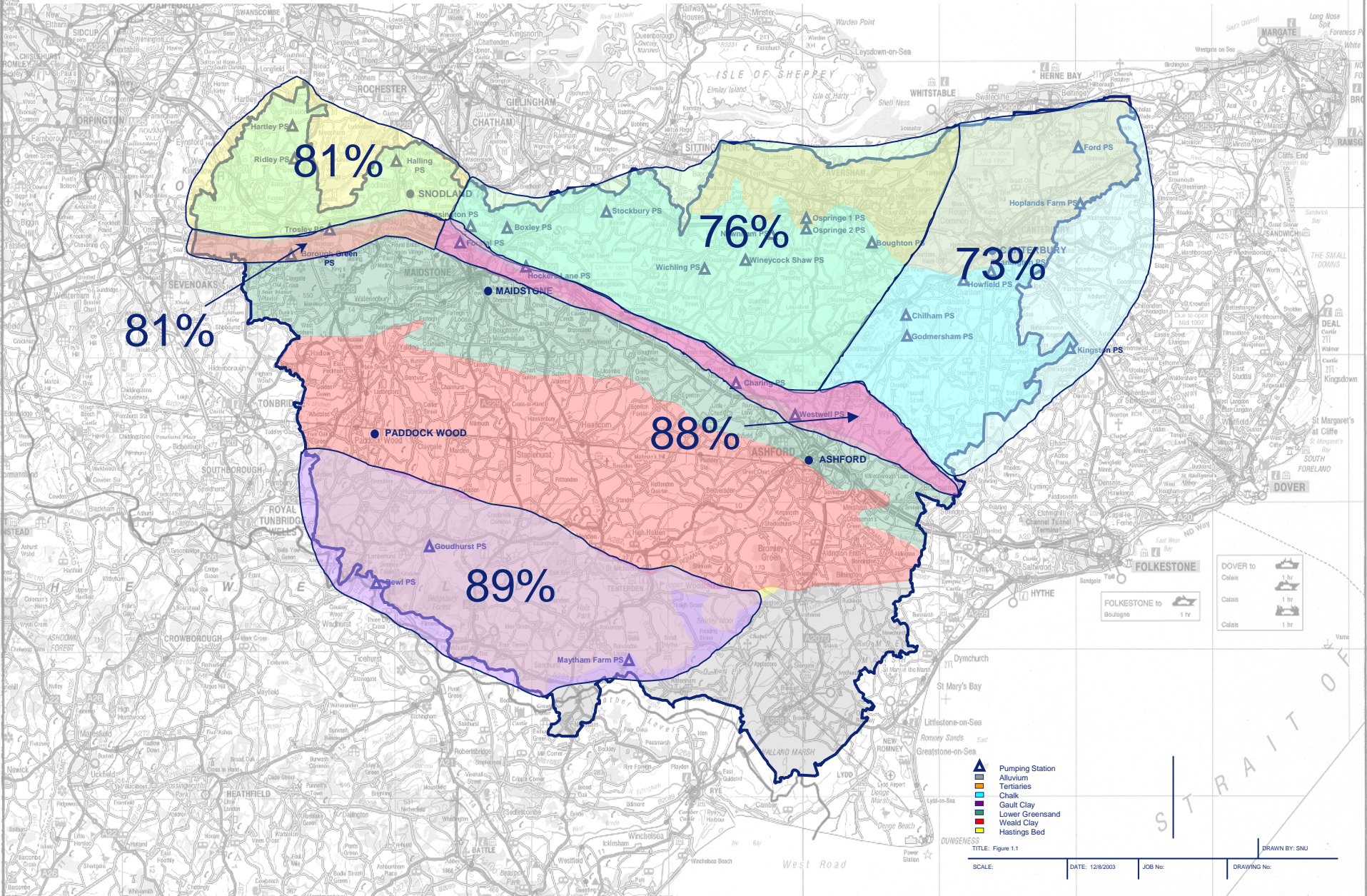


# Where our Water Supply Comes From



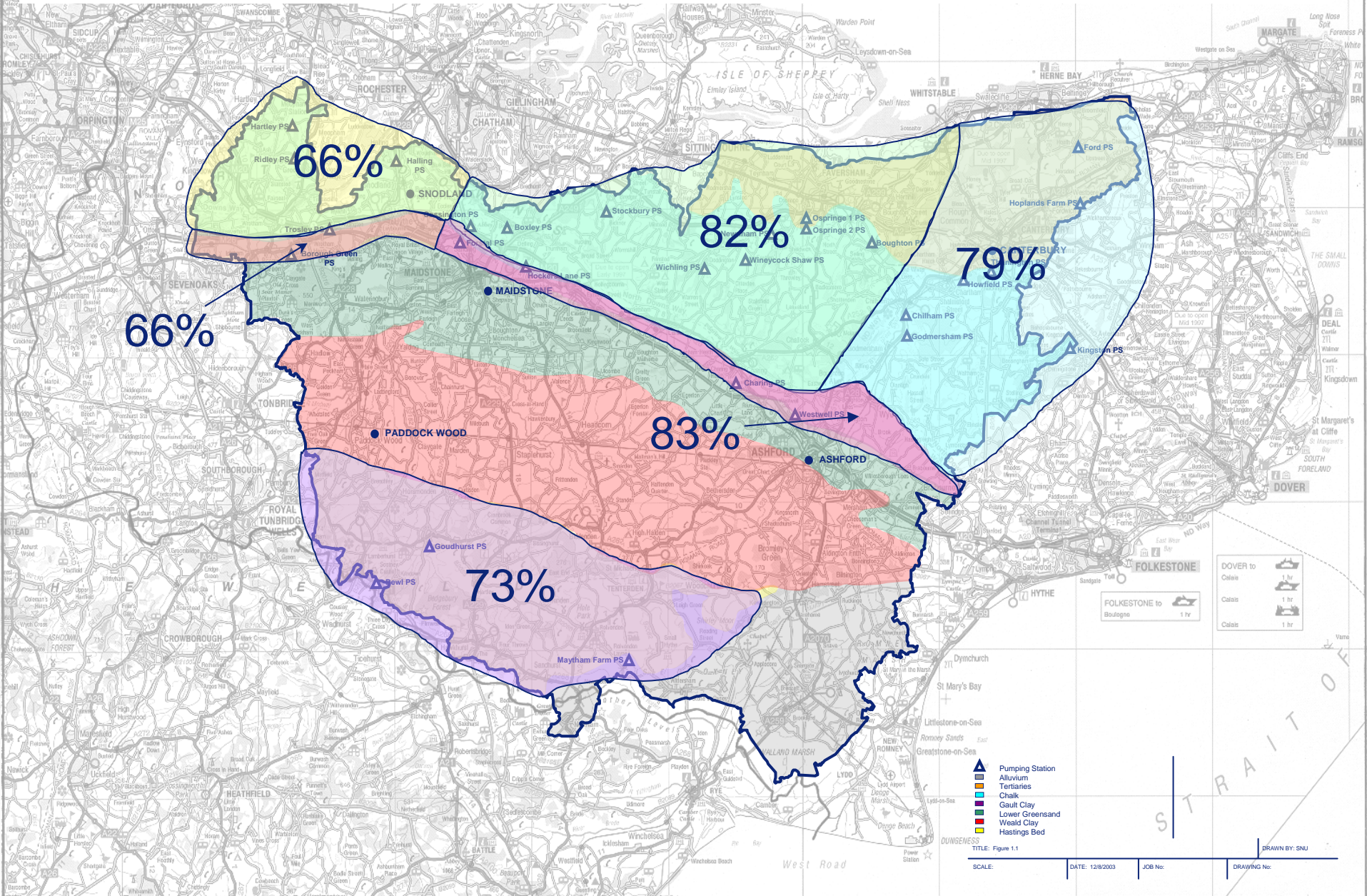


# March 06 Rainfall as % LTA



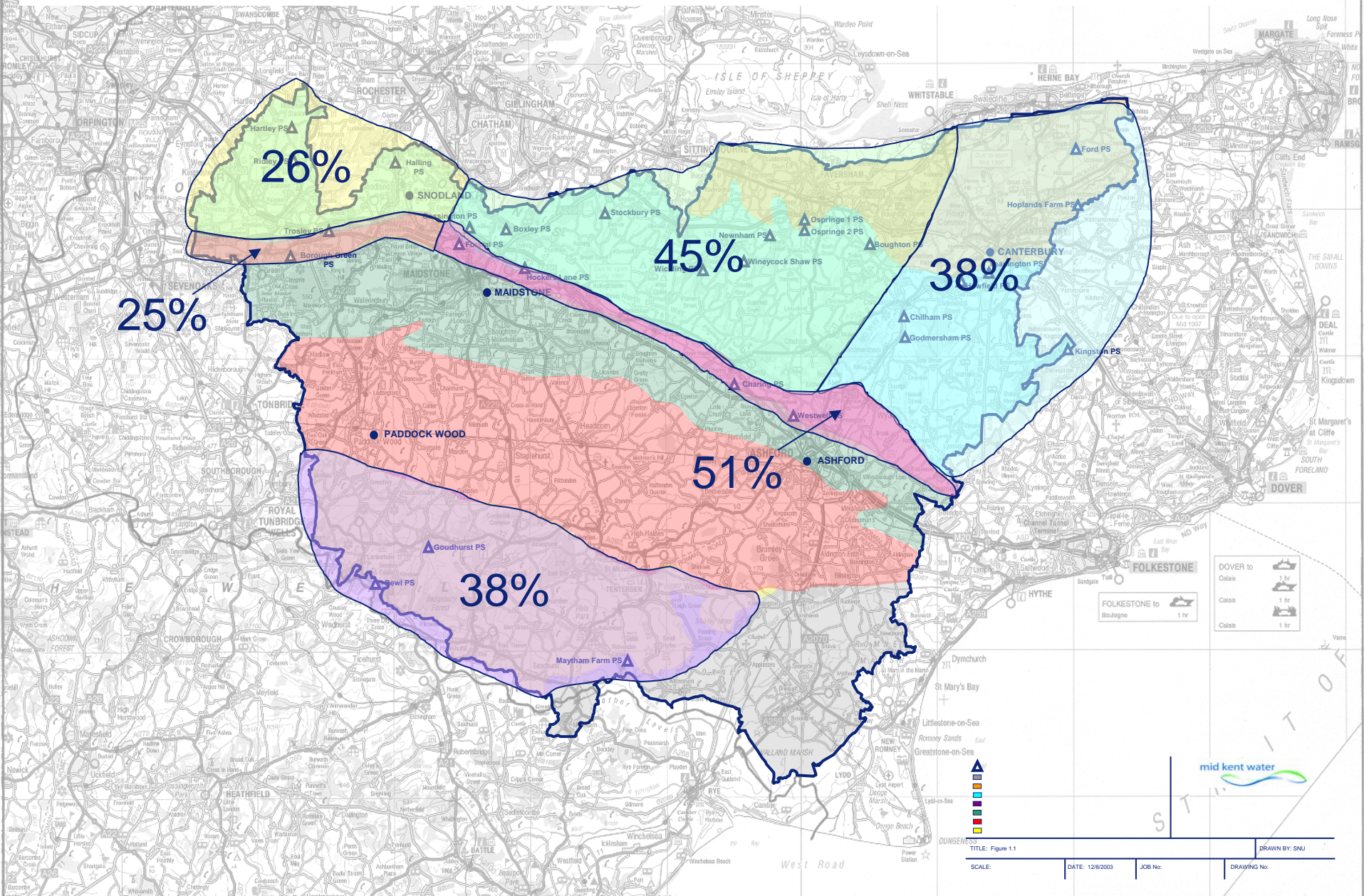


# Rainfall as % LTA (1 October 2005 to March 2006)



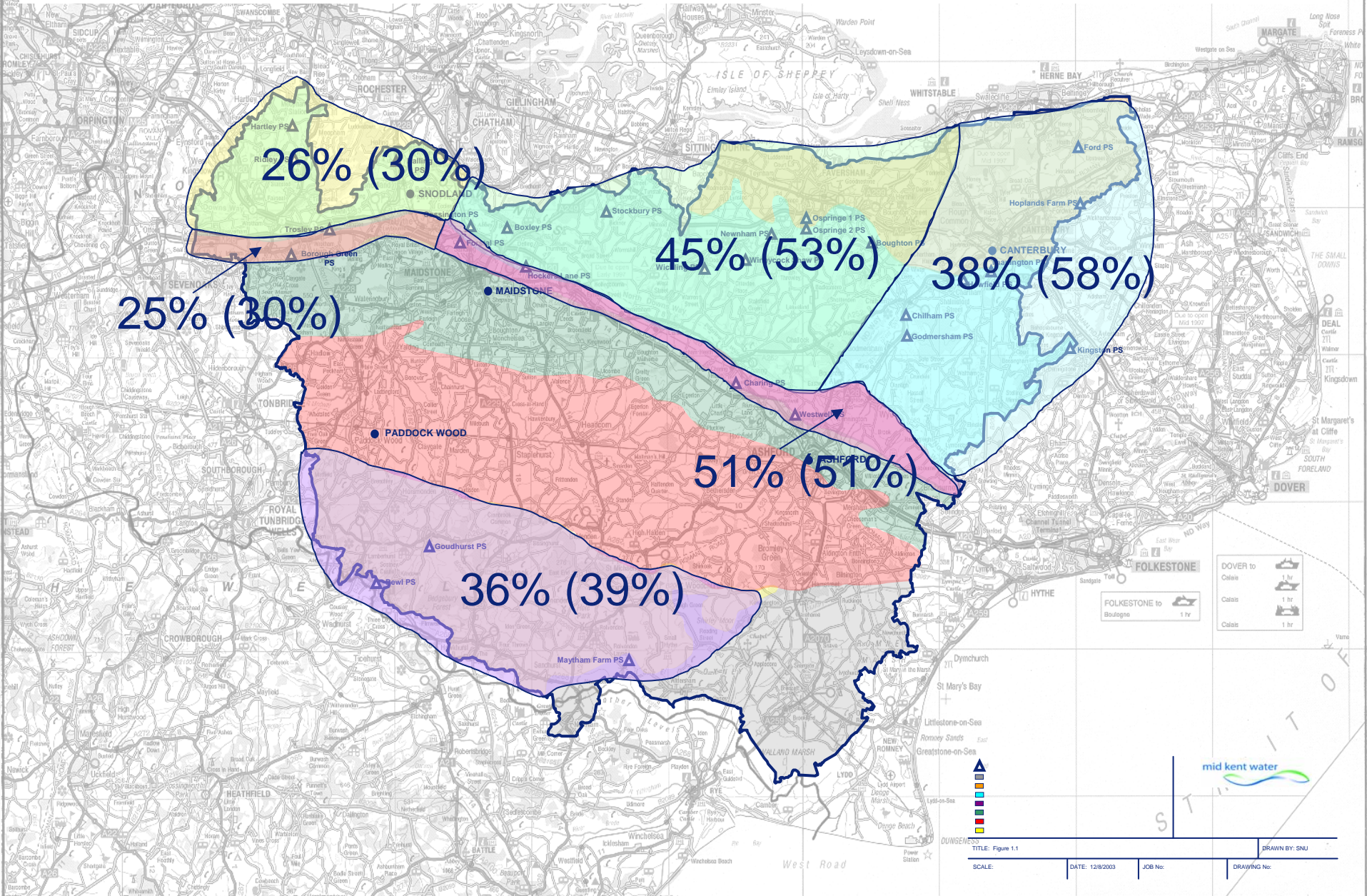


# Recharge as % LTA (1 October 2005 to March 2006)



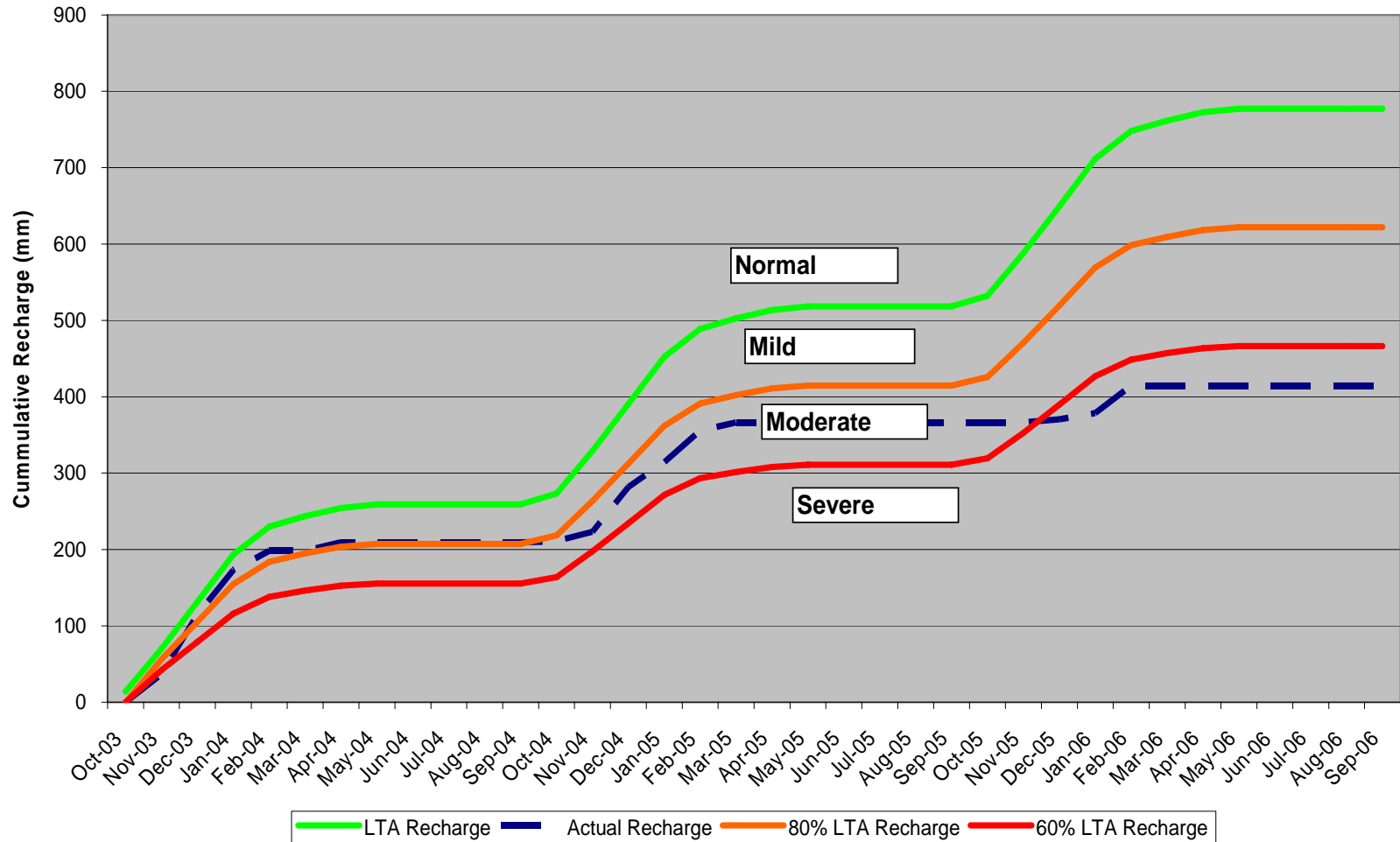


# Recharge as % LTA (% LTA Now Vs End of Winter 2005)

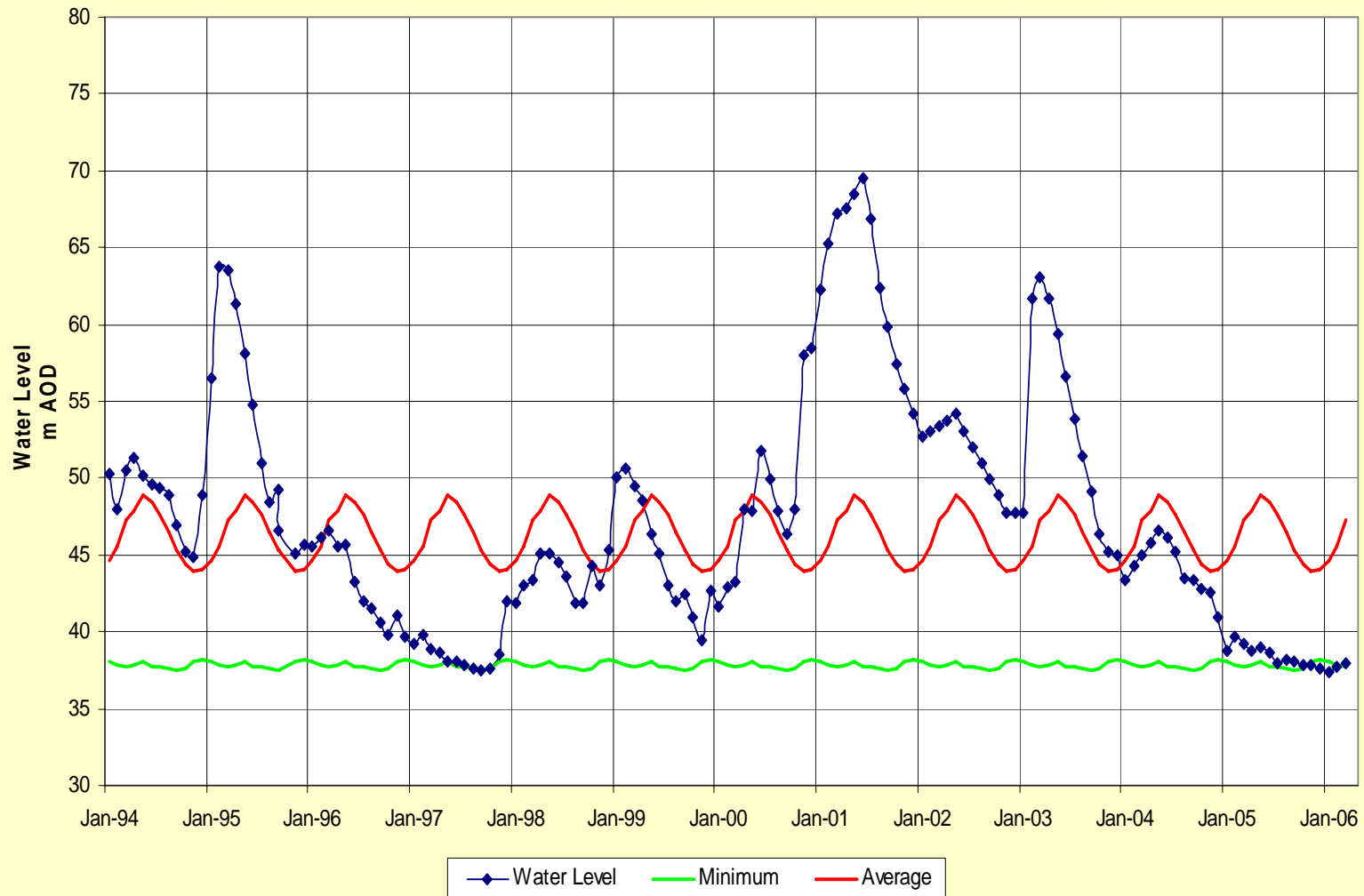




### 3 Yr Recharge Drought Trigger Assessment

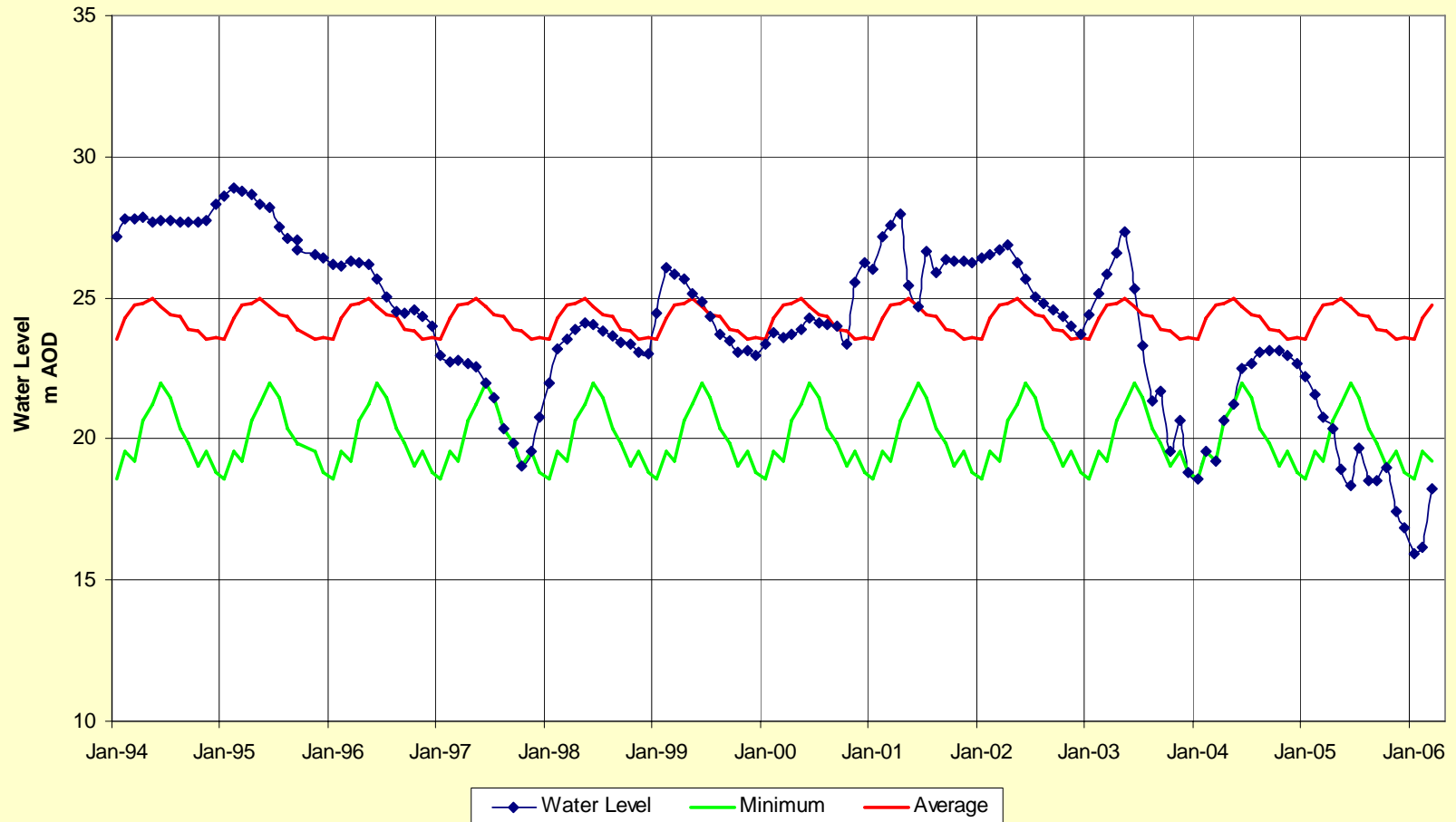


## Stansted No 1 Borehole: Chalk West of Medway Catchment





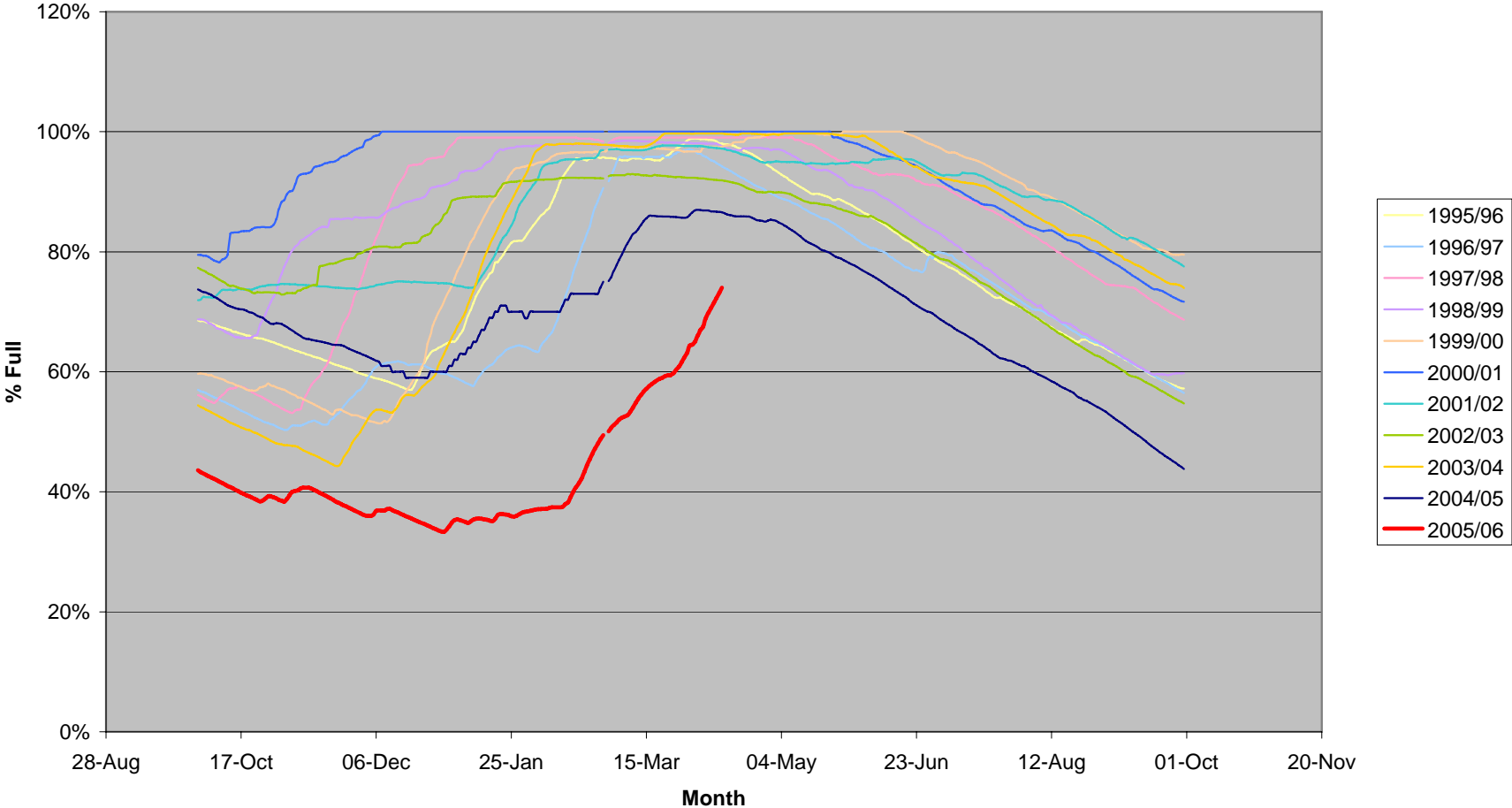
## Elphicks Farm Borehole: Ashdown Beds Catchment



# Bewl Water Levels



Bewl Reservoir Historical % Full Record





## **Sutton and East Surrey**

Full hosepipe ban 1<sup>st</sup> March 2006. Non Essential Use (NEU) application 17<sup>th</sup> March. Hearing 29<sup>th</sup> March

## **Mid Kent and Southern Water**

Hosepipe ban August 2005. NEU application 20<sup>th</sup> March. Hearing 10<sup>th</sup> April

## **Thames Water**

Hosepipe ban from 3<sup>rd</sup> April 2006. NEU application 18<sup>th</sup> April Hearing 15<sup>th</sup> May

## **3 Valleys**

Hosepipe ban from 3<sup>rd</sup> April 2006.

## **South East Water and Folkestone & Dover**

Hosepipe ban August 2005 (SEW) and 1<sup>st</sup> April 2006 (F&D).

## Non Essential Use Drought Order

Reduction / banning of:

Watering by hosepipe, sprinkler or other similar apparatus of gardens, verges, allotments, parks, sports pitches - whether public or private

Filling of private swimming pools

Filling of ornamental ponds

Operation of mechanical vehicle washers

Washing of road vehicles, boats ,trains, planes

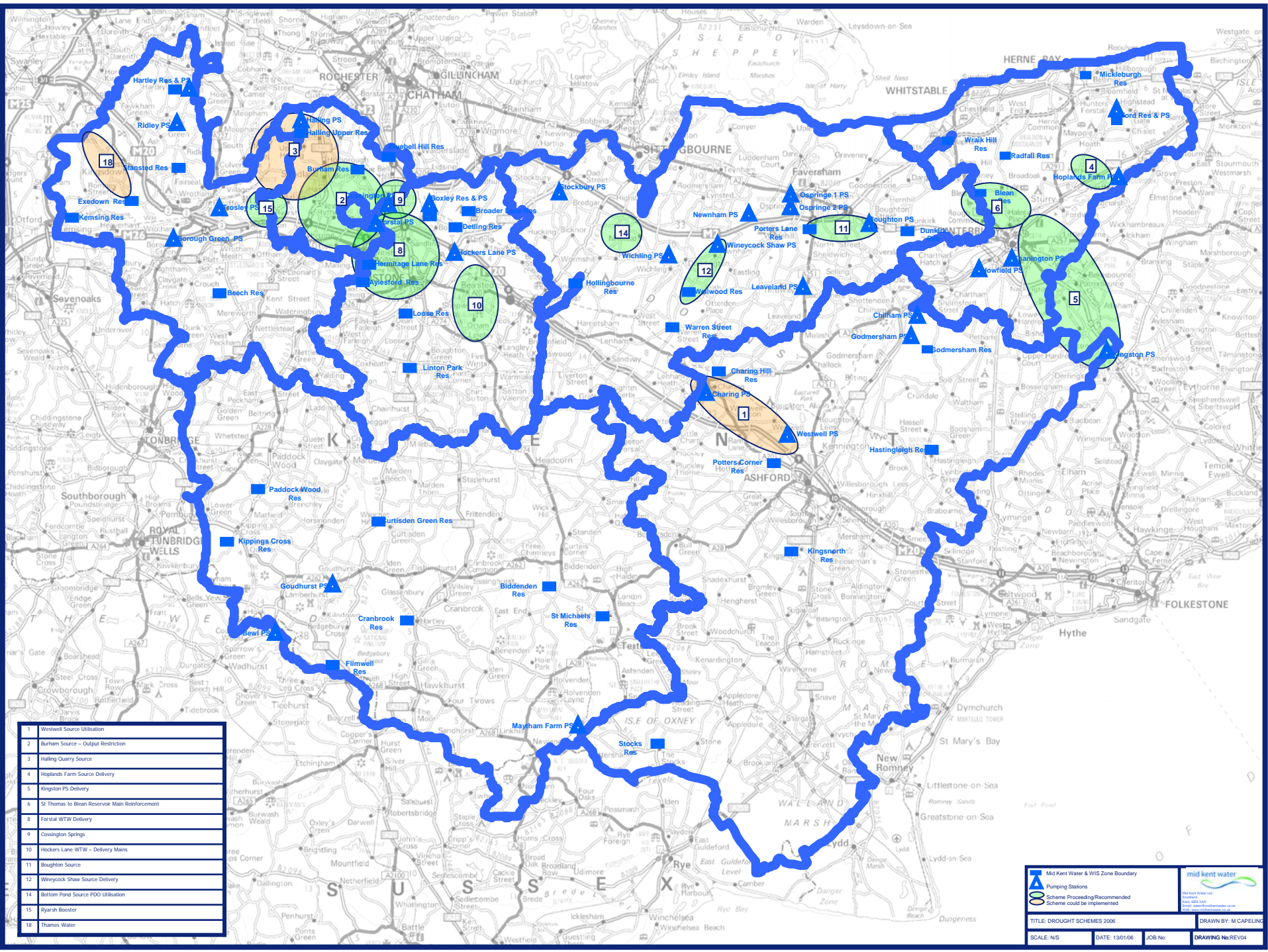
Cleaning of the exterior of buildings other than windows

Cleaning of windows using a hosepipe or sprinkler

Cleaning of industrial premises

Operation of ornamental fountains or cascades

Automatic cisterns in premises that are wholly or substantially unoccupied



1	Westwell Source Utilisation
2	Burham Source – Output Restriction
3	Halling Quarry Source
4	Hoplands Farm Source Delivery
5	Kington PS Delivery
6	St Thomas to Blean Reservoir Main Reinforcement
8	Forstal WTW Delivery
9	Cosington Springs
10	Hockley Lane WTW – Delivery Mains
11	Boughton Source
12	Wineycock Shaw Source Delivery
14	Bottom Pond Source PDD Utilisation
15	Ryehill Booster
18	Thames Water

Mid Kent Water & WIS Zone Boundary Pumping Stations Scheme Proceeding/Recommended Scheme could be implemented	
TITLE: DROUGHT SCHEMES 2006 SCALE: NS DATE: 13/01/06 JOB No:	DRAWN BY: M CAPLING DRAWING No: REV04



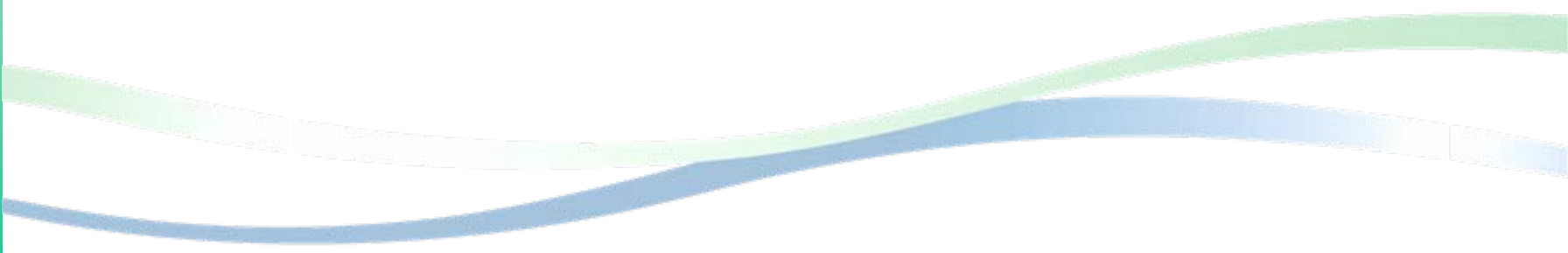


# Leakage 2004 – 2005 (1999 – 2000)

---

■ Sutton & East Surrey	90 litres / prop / day (91)
■ South East Water	116 litres / prop / day (167)
■ Mid Kent	116 litres / prop / day (122)
■ Folkestone & Dover	114 litres / prop / day (120)
■ Southern Water	89 litres / prop / day (94)
■ Thames Water	261 litres / prop / day
■ Industry Average.	154 l/prop/d. (143).

# Media activity to date

- Press releases
  - Drought section on MKW website
  - Various Radio and TV interviews
  - Communication with MP's Councils and Interest Groups
  - Letter to all domestic customers
- 
- The bottom of the slide features decorative wavy lines in shades of green and blue, set against a light green vertical gradient on the left side.



# Regional PR activity

- South East Water Companies and Environment Agency
- Bewl Media Day held on 20<sup>th</sup> March
- Regional website now live : [www.beatthedrought.com](http://www.beatthedrought.com)
- Cinema advertising scheduled for 7<sup>th</sup> April – 12<sup>th</sup> May (540,000 admissions)
- Radio advertising on Invicta FM scheduled for May & July
- B&Q campaign scheduled for 6<sup>th</sup> – 21<sup>st</sup> May

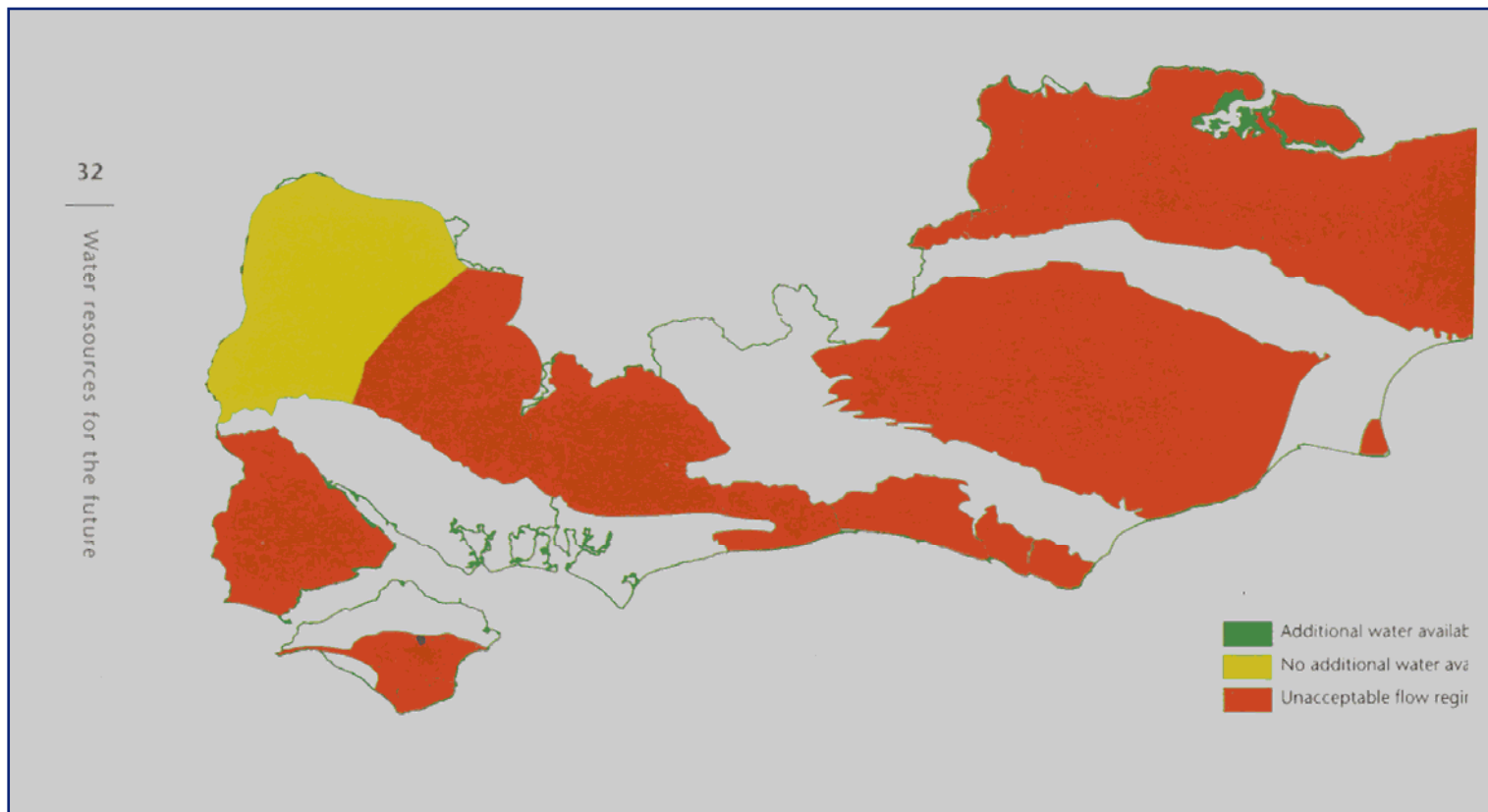




Current	
Pop	588,000
Houses	224,000
Average demands	159 ml/d
Peak demand	214 ml

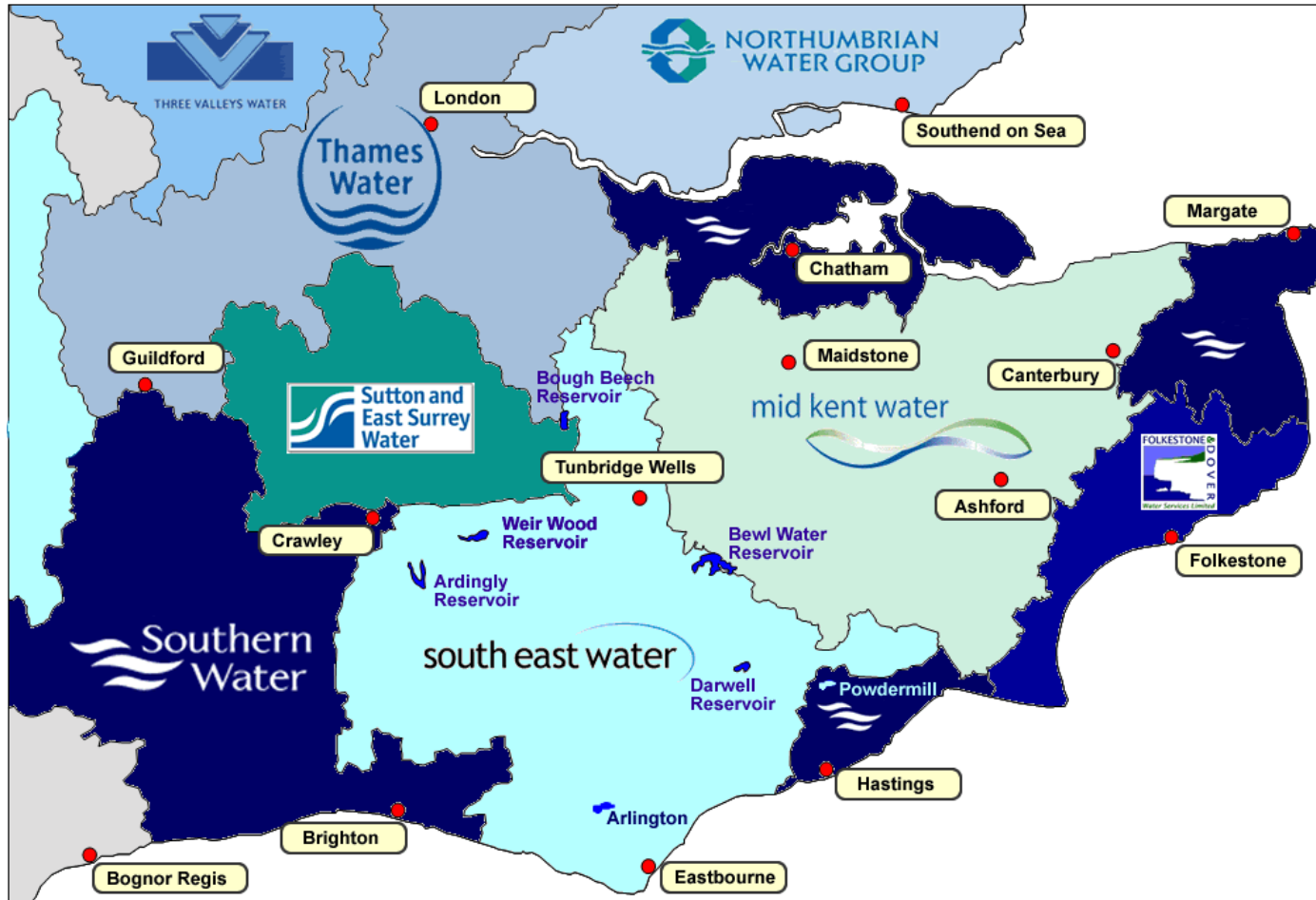
2030	
Pop	733,000
Houses	292,000
Average demands	192 ml/d
Peak demand	261 ml

## Ground Water Resource Status across South East England

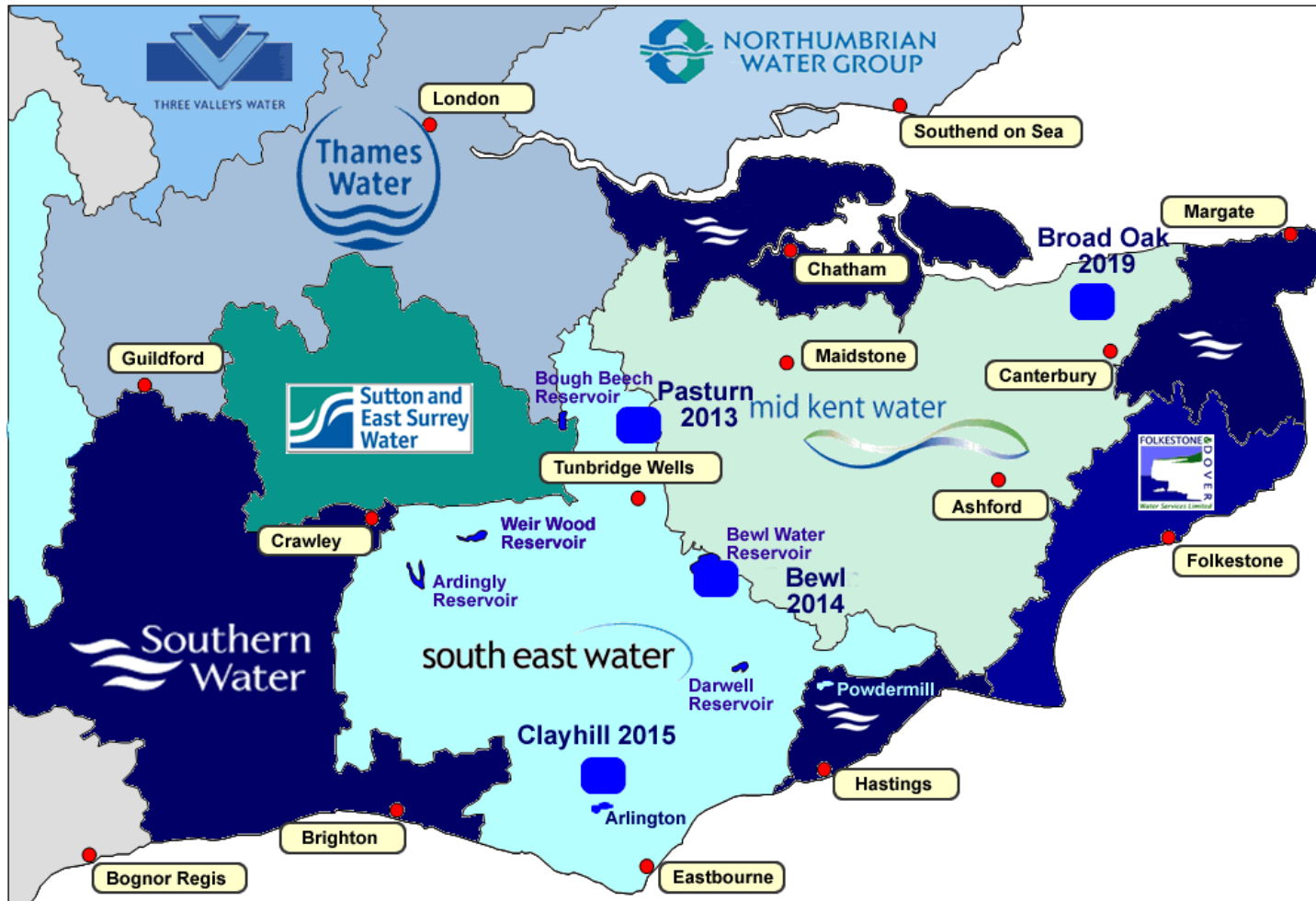




# Impounding Reservoirs – Current

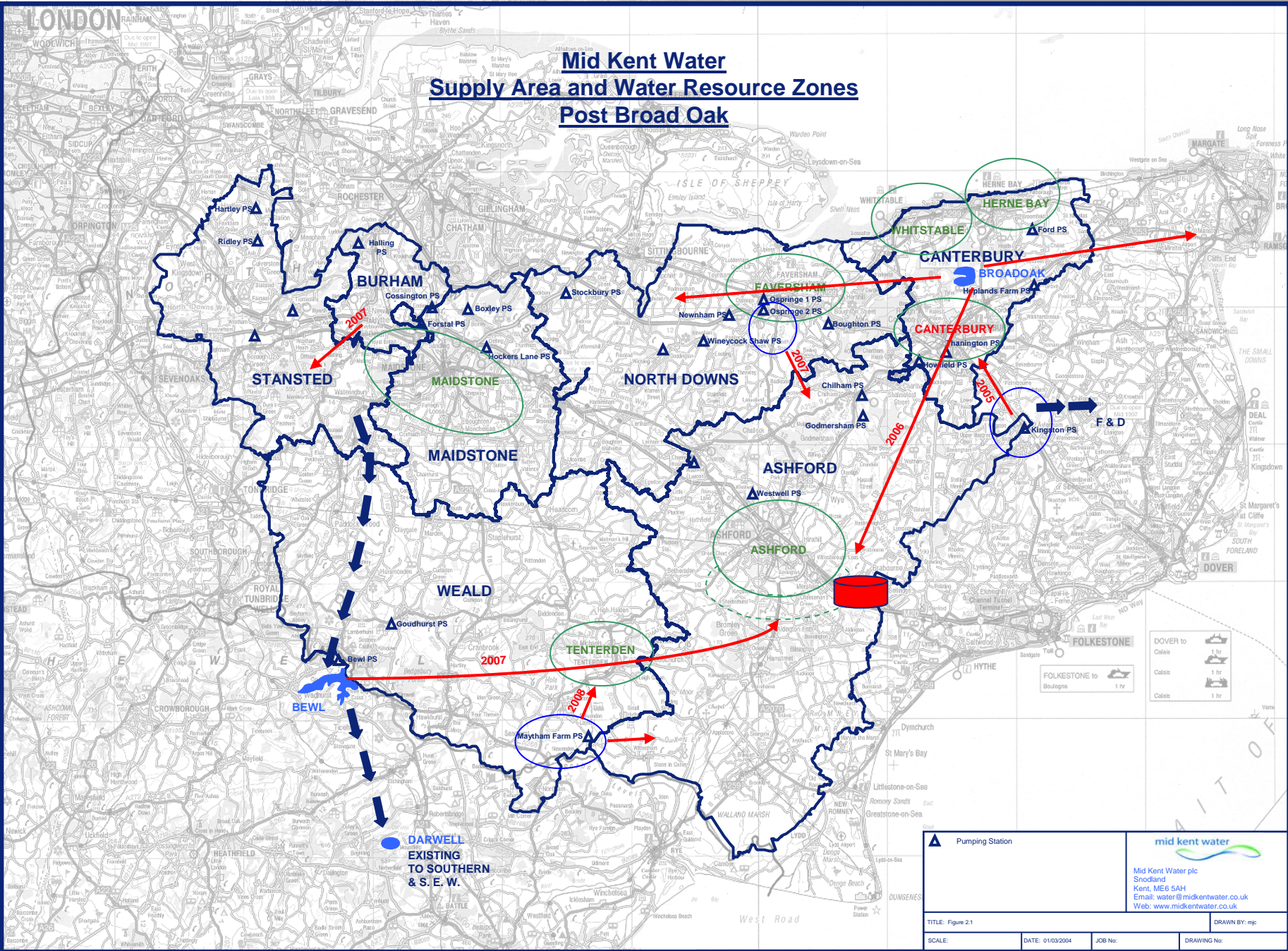


# Impounding Reservoirs – Proposed





# Mid Kent Water Supply Area and Water Resource Zones Post Broad Oak



<p> Pumping Station</p>	<p></p> <p>Mid Kent Water plc Snodland Kent, ME6 5AH Email: water@midkentwater.co.uk Web: www.midkentwater.co.uk</p>
<p>TITLE: Figure 2.1</p>	
<p>SCALE:</p>	<p>DATE: 01/03/2004</p>
<p>JOB No:</p>	<p>DRAWN BY: mjg</p>



# Broad Oak - location



